

eptisa

annual report

2009



<i>Letter from the CEO</i>	<i>2</i>
<i>Governing Bodies</i>	<i>4</i>
<i>Introduction</i>	<i>6</i>
<i>Markets</i>	
<i>Transport</i>	<i>10</i>
<i>Water and the Environment</i>	<i>20</i>
<i>Building, Energy and Industry</i>	<i>26</i>
<i>Quality and Industrial Safety</i>	<i>30</i>
<i>Instrumentation and Monitoring Engineering</i>	<i>38</i>
<i>Information technology</i>	<i>42</i>
<i>Health</i>	<i>46</i>
<i>Eptisa worldwide</i>	<i>50</i>

Letter from the CEO Luis Villarroya

International expansion, turnkey projects, a focus on water, transport and health sectors have been the key elements in our results

As expected, 2009 was a difficult year. Although all markets have experienced contraction, we are satisfied with our results, having maintained our income in our core business of engineering and increased it in the health sector.

We are fully aware that the market is global and cross-border; **our international business activity has grown by 26% to reach 35% of turnover.**

We are extremely proud to be ranked seventh amongst European companies that work with European Commission.

Our ability to diversify and to be flexible has been crucial in the development of new business opportunities. We are now solidly positioned in wastewater management on both national and international levels, offering efficient solutions. We are carrying out turnkey projects for urban waste and water treatment plants both in Spain and elsewhere in Europe.

In the industrial sector, we have been entrusted with the construction of Alestis' new factory in Cadiz. Considered one of the most advanced aeronautical manufacturing plants, the new factory will supply various A350XWB aircraft parts to Airbus.

In transport, we remain the company to rely on for the design, supervision and quality control of the execution of large projects, allowing us to grow along with the railway

sector infrastructure plan. The determining factor of our position in this area is our ability to work in conjunction with construction companies on public-private funding schemes, optimising design and services to operational requirements.

The health business underwent a year of growth, with the opening of two residences and a tripling of the number of beds.

All this has been possible thanks to impeccable internal organisation and management and to the technical expertise of our client-oriented qualified personnel

The agreements signed and the future possibilities of the sector encourage us to continue in this direction. These enable us to advance in applying our belief that business objectives are compatible with the development of services with a markedly social purpose.

All this has been possible thanks to impeccable internal organization and management. The application of savings and cost optimization programs by our centres has increased our investment capability. However, the real emphasis has been placed on our people, with a Personnel Plan based on functions and skills for developing professional careers within the organisation.

Conciliation and equality programs have contributed to the professional development of our female employees and our commitment to the family.

I do not wish to forget one of our most important values: innovation. In times of crisis, companies must invest in R&D, technology and creativity management to be able to offer the market flexible, profitable solutions and services. Our interest in innovation is a constant in all our business areas.

We closed the year having achieved our much-desired wish to give the company a unique, modern, representative headquarters, based on ergonomics, sustainability and productivity to provide better client care, encourage synergies and improve the working conditions of our employees. I am convinced that concentrating our activities is an opportunity to make our leadership even firmer.

The prospect of public-private investment in the sector, international opportunities and, above all, our values and resources, make me confident we will meet the difficult challenges of the years ahead successfully.



“Our international business activity has grown by 26% to reach 35% of turnover.”

Luis Villarroya
Vice-President and CEO

Governing Bodies

Board of Directors



Ángel Corcóstegui Guraya

President

Luis Villarroya Alonso

Vice-president and CEO

Ángel Catena Asúnsolo

Iñaki Echave Larrañaga

Felipe García Berrio

Enrique Leyva Pérez

Joaquín Llorente Malagón

João Luis Ramalho de Carvalho Talone

Advisory Committee



Juan Manuel Eguigaray Ucelay

Martín Eyries Valmaseda

Luis de Guindos Jurado

Rafael Miranda Robredo

Pedro Pérez Fernández

Ignacio Santillana del Barrio

Management Committee



Javier Andreu Posse

Ignasi Cantarell Taxonera

Ángel Catena Asúnsolo

Alberto Corbí López

Antonio Fernández Garitaonandía

Gonzalo García Alonso

Felipe García Berrio

Olga Ginés Ferrero

Joaquín Llorente Malagón

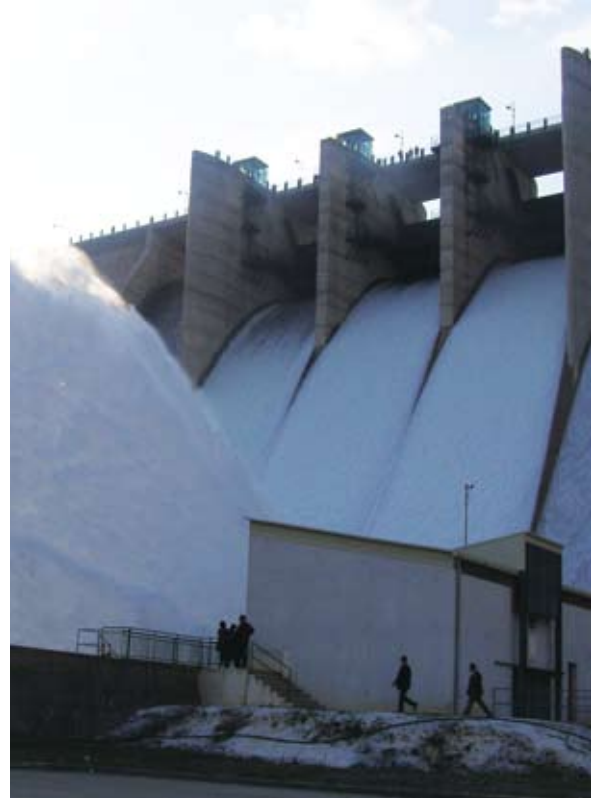
Gerardo Roiz de la Parra

Alfonso Rubio Barroso

José Manuel Sampedro Quijano

Javier Sanz Urbina

Luis Villarroya Alonso



Introduction

We have developed engineering, consultation and turnkey service in the water, transport, health and building management sectors over four continents

The year ended with an income of €166 million in our core engineering operations which, together with the growth of up to €8.6 million in health, and results from the failing construction activity, completed the Eptisa income.

Activities by market, throughout the year, consolidate our leadership in traditional engineering services, with growth in the transport and water sectors. Eptisa takes part in the main national water resources plans and supply programmes for drinking water to municipalities. Regarding integral water treatment with engineering

quality control for the main high-speed railway works, together with conventional, tram and subway services.

In the **building sector**, the industrial market continues placing its trust in Eptisa project management and turnkey services, not only in Spain, but also internationally.

In 2009, the **works technical assistance, instrumentation, and quality control** activities were centred on civil and urban works on all levels of operations and localisation. Service diversification and international expansion are the keys

For the public-private partnership field, we can provide technical consultancy and financial-economic services to public administrations, financial bodies, and concessionaires and construction companies which, in 2009 enabled us to be a partner in the main international concessions

service in basic and detail design, project management, construction management, works maintenance and technical assistance, Eptisa professionalism was clearly demonstrated at home and abroad with numerous turnkey projects during 2009.

In the **transport sector**, in the private-public partnership field, Eptisa provides technical consultancy and financial-economic services to public administrations, financial bodies, together with concessionary and construction companies. Throughout 2009, works designed by Eptisa were successfully executed in Ireland, Spain and the United States. Within the railway sector, Eptisa has worked on the main high-speed line design projects within Spain, as well as participation in technical assistance and

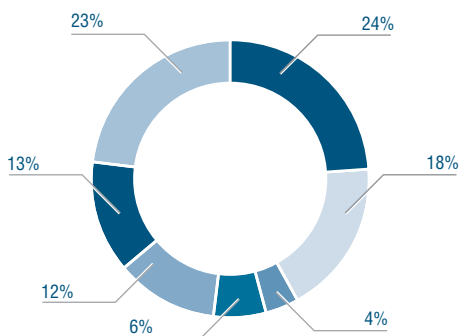
to maintaining professional activities relating to the works, despite the fall of investment in buildings and civil and urban infrastructures.

The **information technologies sector** was the most affected by investment reduction in both public and private administrations. Innovation capability, soundness of products and services quality was the basic factor that maintained our results in these activities stable.

Eptisa commenced its **social-health activity** eight years ago through the company Casta. It opened two centres in 2009, with 100% management by our personnel and with participation in another two in the Basque Country. The Casta Asturias Langreo Project, together



SECTORS



Water and the Environment	24%
Quality and Industrial Safety	18%
Development Cooperation	4%
Building, Energy and Industry	6%
Instrumentation and monitoring Engineering	12%
Information Technology	13%
Transport	23%



1. Turnkey project for Alestis in Cádiz



2. Manufacturing plant for parts of Airbus A-320 in China





»

1. Engineering services for waste water treatment plants

with HUNOSA in “la Moquina”, is an initiative that combines health services with the recovery of a mining region and job creation. In Guadarrama, the Casta Centre began operations in Autumn of 2009 with a capacity of 170 beds.

The **international subsidiary network**, with presence in over thirty countries, ensured that we are the ideal partner for our clients in large-scale projects in other countries, to bid for opportunities in local markets and manage projects with local production.

The company with the **Development Cooperation** activity branch is a worldwide yardstick in the multilateral funds market and also the seventh company in contracting with the European Commission and the first in effectiveness.

The workforce has remained stable, increasing abroad and in the health activity, exceeding a total of 2,100 employees. The conciliation and equality

policies position Eptisa amongst the leading companies in equal opportunities for women. The percentage of women in the overall workforce was above 44% in 2009.

Tenacious and constant work in improving the quality of our services and efficiency in project management has been fruitful, producing consolidated results in these uncertain times.

»

2. Eptisa involved in the large scale high-speed routes in Spain

»

3. New Eptisa headquarters in Madrid

»

4. M-50 upgrade in Dublin

»

5. Eptisa Salud Casta triples the number of beds in 2009



Transport

Eptisa experience is exported to other countries by participating in consortiums and private-public partnerships in international projects

Throughout 2009, we participated in transport infrastructure projects with the provision of engineering services and information systems for road, rail, sea and air transport, paying maximum attention to technical quality, economic optimisation, construction and operation safety, operational functionality and maximum environmental respect in each intervention.

In the private-public partnerships field in 2009, we took part in national and international projects with technical consultancy and financial-economic services for public administration, financial bodies, together with concessionary and construction companies.

In the railway area, we are working on Spain's main high-speed lines, providing our engineering services from drafting of projects, studies, works support and construction management, works testing and quality control and safety to monitoring and control systems.

Mention should be given to the awarding, **in Spain**, of four high-speed line projects, a conventional railway network project, together with foreign projects in collaboration with construction companies.

In urban works, we continue to be active in the inspection and monitoring of underground works for metropolitan subway and tramway lines in Madrid, Cádiz and Barcelona.

In Ireland, we carried out the informative study and preliminary design for the Dublin light-railway bypass line (Metro West), between the districts of Cappagh

and Meakstown. The project received congratulations from the Irish public railways body, Railways Procurement Agency, for the quality of the preliminary study and the creativity of the structural solution for the light railway crossing at the M50/N2 junction by means of 390-metre long metal railway structure.

In Portugal, Eptisa carried out the tender design in a project for the Poceirao – Caia railway line, which included the design

2009 was a year of expansion for Eptisa railways operations, with the company involved in the large scale high-speed routes in Spain.

of 180 kilometres of new double-track high-speed line, 90 kilometres of a new Iberian-width, single-track line and 13 kilometres of renovation and adaptation of the existing line.

In the United Kingdom, we are participating in the tender design for the Nottingham tram system for FCC-Volker Rail. This involves the tender design for the concession of the Nottingham tram system line 2. This work is being carried out with Ardanuy and Hyder, with Eptisa responsible for the geotechnical work, structures and budget integration.

PLATFORM CONSTRUCTION PROJECT OF NORTH-NORTH-WEST HIGH-SPEED LINE. OURENSE-SANTIAGO AXIS. ACCESS TO OURENSE STATION

The works considered in this project are those corresponding to the High-Speed North-Northeast Corridor, Ourense-Santiago Axis, with the section running wholly through the municipal district of Ourense, and with the total length of the section being 1,460 m. This stretch belongs to the future High-Speed Network of Spain.

As regards the new High-Speed Line, only the platform is defined in the project, up to the sub-ballast layer (included), with the track super-structure being the subject of a specific study. In addition, those actions are defined that relate to the railway installations which it is appropriate to carry out simultaneously with the work on the platforms (pipes and cable crossings, earthing and anchoring of posts in viaducts).

This section displayed the particular feature that there were two lines of conventional width in service in the scope of the work, the Zamora-Coruña Line, and the Monforte-Vigo Line and that the platform of the new HSL ran practically the whole length of the Zamora-Coruña Line, which made it necessary to move it. Therefore, the repositioning of both lines was also carried out.

In this case, the work covered the infrastructure, the track, the electrification and the safety and communications installations, as well as all of the provisional railway situations necessary in order to guarantee the viability of the construction process.



TACS OF THE WORKS OF THE NEW HIGH-SPEED RAILWAY ACCESS OF LEVANTE. MADRID-CASTILLE LA MANCHA- VALENCIAN COMMUNITY- REGION OF MURCIA. SECTION: LA ENCINA-JÁTIVA NODE. PHASE I. SUB-SECTION: LA ENCINA-MOGENTE NODE

The works executed are the construction of a platform and structure on the old abandoned railway line, which is being enlarged to hold the Iberian width double track; and a platform and structure for the new Iberian width double track of Mogente bypass.

All the existing bridges and viaducts along the line (single track) are going to be replaced by new structures capable of carrying the double track. In this way, the largest bridges and viaducts will be replaced by new viaducts, while the smaller ones will be replaced by frames.

The overpasses cannot be adapted to double tracks and will be new ones that will accept Iberian width double tracks. Finally, the existing 257 metre long Santa Bárbara tunnel will be enlarged from 27 square meters to 75 square metres.



BASIC AND OPTION TO DETAILED DESIGN OF THE SOUTH TENERIFE RAILWAY LINE: FROM START OF MONTAÑA DE GUAZA (ARONA) TUNNEL –START OF LOS CRISTIANOS-LAS AMÉRICAS TUNNEL

This four metre long section belongs to the South Tenerife Railways line, which connects Santa Cruz de Tenerife with Los Cristianos. The operations involved in this project consist of excavating a tunnel of approximately 3.3 kilometres of double track under Montaña de Guaza, using a tunnel boring machine (TBM) with a 5.75 metre inside radius, which will provide an interior free surface of 85 square metres sufficient for the crossing of two trains, and a tunnel area between screens corresponding to the Los Cristianos station, of some 700 metres. An emergency gallery for the Montaña de Guaza tunnel will run parallel to this railway tunnel, which will also be excavated using a TBM, in this case, with a 2.89 metre radius, which will be connected to the railway tunnel via eight connection galleries.

Mention should be made of the crossing under the TF-1 motorway, which is a delicate point because it presented a reduced cap that required the execution of a battery of jet-grouting columns in order to increase the ground density and to increase its strength.

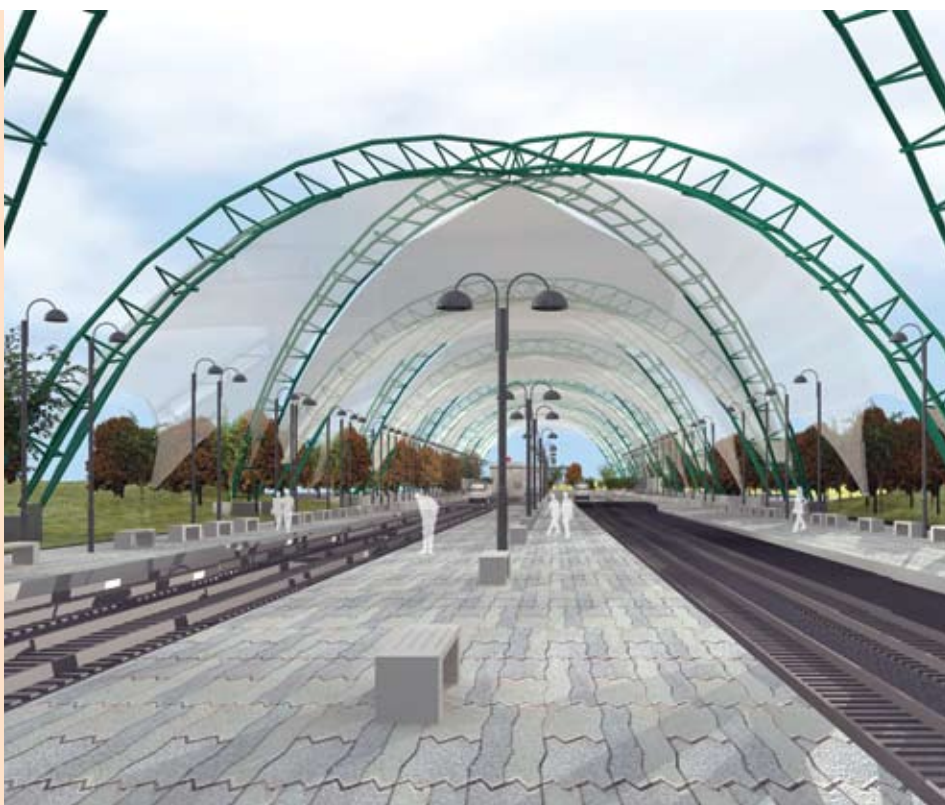
Finally, it should be pointed out that the 265 metres of underground works for the Avenida de Chayofita is also an objective of this project, because it is affected by the construction of both the station and its telescope.



DETAILED DESIGN OF SEVILLE LOCAL RAILWAY SERVICES: DOUBLE TRACK FROM LA CARTUJA STATION AND ENLARGEMENT OF SEVILLE LOCAL RAILWAY SERVICES TO BENACAZÓN

The project for the Line C-2 enlargement to Cartuja station consists of executing Iberian width, electrified double track with signalling for both directions and with traffic priority between Santa Justa and La Cartuja stations. This requires doubling the track along a length of approximately 1,400 metres and executing improvement work and for changing the width along some 5,000 metres. Regarding the station, a new one will be constructed at San Jerónimo and the Olympic Stadium stations will be remodelled (the only one now providing service) and La Cartuja, all designed to have new passenger buildings, platforms and canopies.

The project for Line C-5 enlargement to Benacazón includes operations on six stations along the existing Sevilla-Huelva line. Of these six, two are the refurbishing of historic buildings in the existing stations (Villanueva del Ariscal-Olivares and de Sanlúcar la Mayor) and four new buildings will be constructed in the stations Camas, Valencina-Santiponce, Salteras and Benacazón.



CONSTRUCTION MANAGEMENT OF THE TRAMWAY LINE FROM CHICLANA TO SAN FERNANDO IN CADIZ

This tramway will connect the municipalities of Chiclana and San Fernando, with a total length of 12.7 Kilometres. It has seventeen stops, nine in section I: Chiclana-Caño Zurraque (6,890.88 metres long) and eight in section II: Caño Zurraque-San Fernando (5,805 metres long).

The interurban sections will be executed by double track on ballast, with the installation of catenary CR -160 planned for the subsequent electrification project. There are two structures. one is 600 metres long to cross the Caño Zurraque and the other, 282.62 metres to cross the Caño Sancti Petri.

Two types of platform are considered for the urban sections: reserved tramway platform and shared tramway platform (partly pedestrian section). The central catenary posts will be installed in the reserved platform section which will finished with turf. It should be mentioned here that, because of the proximity of the buildings in the historical quarter, various damping systems have been installed to eliminate the transmission of vibration to neighbouring buildings.



TENDER DESIGN OF THE NOTTINGHAM TRAM, ENGLAND

This involves the tender design for the concession of the Nottingham tram system line 2. This project consists of the enlargement of the existing line (Line 1), which was opened in 2004, from its currently terminus in Nottingham railway station. Specifically, the line is to be enlarged, as an interchanger and two tracks to connect with the Clifton (Line 2) and Chilwell (Line 3) districts to the south of the city. Both will include parking, each with more than 1,000 spaces.

Line 2 is 7.6 kilometres with 13 stops, with the crossing over the River Trent. Line 3 is 9.8 kilometres with 15 stops, with connection and integration into Queen's Medical Centre.

This work was carried out with Ardanuy and Hyder, with Eptisa responsible for the geotechnical work, structures and budget integration.



NEW N-25 WATERFORD CITY BYPASS, IRELAND

The N25 through Waterford passes along congested city quays and crosses the River Suir on the open-span Rice Bridge, the only crossing for motor traffic in the city, with an average daily traffic load of 40.000 vehicles. The need for a second river crossing has been recognised over many years.

By providing a bypass route including a new crossing of the River Suir, the N25 Waterford Bypass PPP scheme will greatly ease traffic congestion and benefit the local community of Waterford by improving the environment and travel times.

The N25 Bypass project comprises the design and construction of 18 Km of new dual carriageway and corresponding links/side roads, with 20 structures; including 9 Viaducts, 7 overbridges and 4 underpasses.

As a member of the design consortium, Eptisa provide the detailed design of Structures & Earthworks of the section located north to the River Suir (including N9 link and corresponding side roads), pavement detailed design for the whole scheme, site supervision of the section located north to the River Suir (including N9 link and corresponding side roads).



IMPROVEMENT OF THE I-595 IN SOUTH FLORIDA

These works are one of the most important in Florida, in which Eptisa worked for the construction company in the improvement project for one of the most transited arteries in Miami.

The project consists of the reconstruction, addition of auxiliary lanes and resurfacing of the I-595 mainline (including associated improvements to frontage roads and ramps), and a new reversible express lanes system in the I-595 median. There will be tolled reversible ground level express lanes to be known as 595 Express, serving express traffic to/from I-75/Sawgrass Expressway from/to east of SR 7, with a direct connection to the median of Florida's Turnpike.



In **Roadways**, we are working for the public administration in layout and construction designs as well as preliminary studies for the General Planning Sub-directorate of Spain. We have also been involved in roadway safety and weighing stations.

In addition, we have undertaken projects for regions such as Aragon, Madrid, Valencia and Andalusia with important projects for highway network improvement.

In Spain, Eptisa is working on the **first generation highway** concessions, for example, the *“Layout and construction design for the first establishment and reform works corresponding to the concession for the conservation and operation of the A.-2 dual carriageway”* for Ferrovial, together

with *“Layout and construction design for the A-7 Mediterranean Highway, with the addition of a third lane”*

We participated in **Ireland** in projects that will be opened throughout 2010, such as the M3 Clonee to North Kells motorway, for which we produced the geotechnical construction design and the M7 Portlaoise bypass, for which Eptisa prepared the pavement design.

In **Portugal**, the *detailed design for the Algarve Littoral project* concession is currently being developed, which covers the construction of 19 kilometres of motorway and 14 of conventional highway, together with the improvement along 227 kilometres of infrastructure (32 kilometres of motorway and 195 of

conventional highway). The current works will help to improve mobility in transport infrastructures in Southern Portugal with the implementation and adaptation of this transport link between Cabo de San Vicente and Vila Real de San Antonio, as well as the connection with the Spanish border.

In **Serbia**, we are working on the *works supervision for the Belgrade bypass*, a dual carriageway with a €173 million budget, which is part of the Pan-European Transport Corridor X.

DESIGN OF THE M-50 UPGRADE IN DUBLIN, IRELAND

The works consist of a half-ring bypass to the west of Dublin. The highway enlargement with the addition of a third lane, together with the implementation of direct access roads at seven junctions, it will modernise the existing infrastructure, improve road safety and provide enhanced wheeled traffic flow. The official opening for the M50 is planned for the end of 2010.

Eptisa prepared the detailed design to improve 24 kilometres of the Dublin M-50 motorway, which consisted of increasing the number of lanes from two to three in both directions, the construction of new service roads between the M1 and M3 junctions and between the south of the Ballymount and Scholarstown junctions and the improvement of the Ballymount, N-81, Scholarstown and Sandyford junctions.



INFORMATIVE STUDY AND LAY-OUT DESIGN FOR THE ROADWAY NETWORK IN SECTOR II IN HUESCA

The purpose of this project is the definition and evaluation of the various comprehensive adaptation operations for the highways belonging to sector 2HU of the Aragon roadway network, within the PLAN RED of the Aragon government.

The works are concentrated on the comprehensive conditioning, pavement improvement, road safety, construction of help systems for operation (data collection systems, variable messaging panels, weather stations and DOMO cameras) and the construction of an operation centre in each zone.



CONSTRUCTION DESIGN FOR THE SECTION A-ERMIDA-PILARTEIROS ON THE HIGHWAY A-57

The works consist of the improvement of the junction of the A-57 highway from Ermita to Pilarteros.

The project includes the construction for route section that commences from the A Ermita junction to the Pilarteros junction, including viaducts and roundabouts, such as the viaduct over the river Lérez, a singular structure, with a length of 890 metres.



WORKS SUPERVISION FOR THE BELGRADE BYPASS

This section of the road, the construction of which will begin during 2010, will link up the Belgrade-Budapest, Belgrade-Zagreb and Belgrade-Nis highways, thus avoiding traffic having to enter the city centre. With a budget of €173 million, it consists of ten kilometres of dual carriageway, forming part of the Pan-European Transport Corridor X.



In **Ports**, we have had growth in projects and technical assistance for construction management activity. Throughout 2009, projects executed for the Spanish Government General Directorate of Coastal and Marine Sustainability have been completed.

Our multidisciplinary and managerial capability in port services has led to the main port authorities entrusting us with works supervision and management for dock and building operations.

Outside Spain, in **Portugal**, the Ports

Eptisa port activities increased in 2009.

and Marine Transport Institute has entrusted Eptisa with the engineering works for the recovery of the original 1997 project for the Port of Tavira, based on new geological and space allocation information.

- «
1. Technical assistance for the construction management of the Prat docks in the port in Barcelona »
 2. Supervision works of the passenger terminal in the Port of Melilla construction »
 3. Technical assistance for the improvement of the Ribera II harbour depth in the port of Melilla

RECOVERY THE ORIGINAL 1997 PROJECT FOR THE PORT OF TAVIRA IN PORTUGAL

The area of implementation of the new port consists on the flooding of terrain in the right bank of Gilão River. The original project from 1997 was not executed, that is why in 2009 the project was retrieved together with the need of update according to the new conditions.

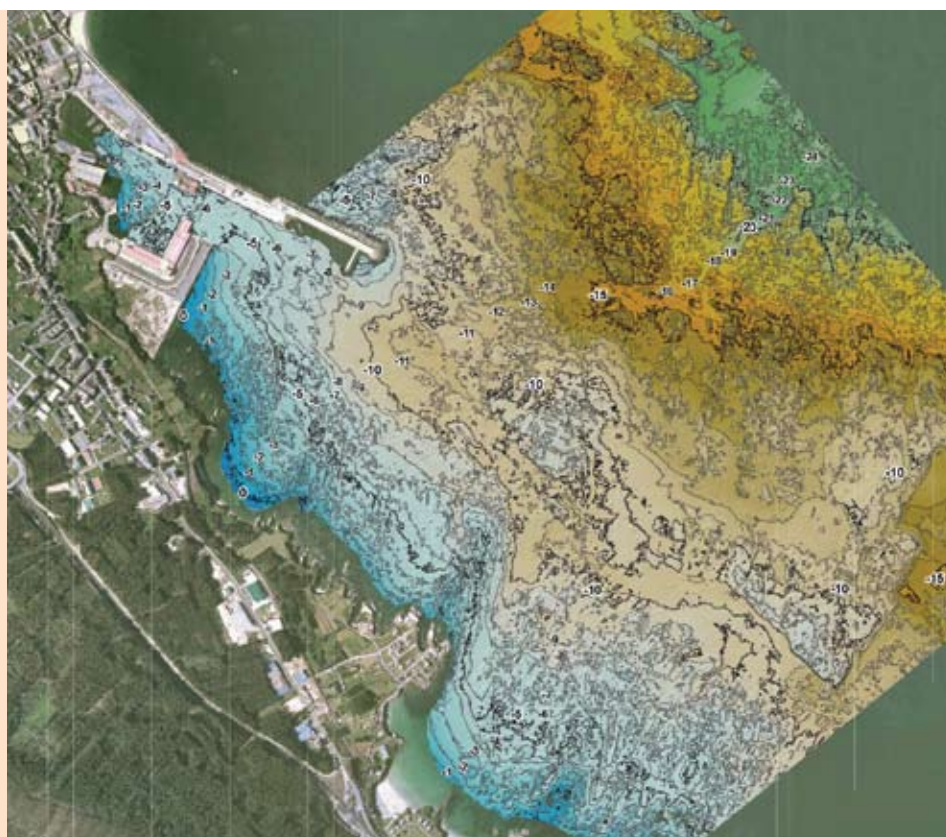
The main changes to carry out are the stability calculation of the docks of blocks on the basis of the geotechnical campaign dated 2008, the transformation of the dock into slopes and vertical docks and the link of the new roads and buildings constructed since then and affect the access and the port's landscape integration. There are also included the archaeological exploration works of the divers.



STUDY OF THE MORPHODYNAMIC BEHAVIOUR OF THE PERDOURO ZONE AND PREPARATION OF A PROJECT FOR THE REGENERATION OF THE BURELA BEACH IN LUGO

The project objective is the recovery of the Perdouro Beach, which is mainly composed of gravel with considerable granulometry, among rocky outcrops. The number of storms has lead to heavy erosion which affects the upper berm with its coastal road. The execution of this project takes into account the prolongation of the support groyne for the Port of Burela, which is beneficial for the creation and stability of a beach in this area.

The Eptisa team carried out the topographic and bathymetric surveys, together with a study of the possible sources of aggregate and deposit zones. The construction project included the creation of 50,000 cubic metre beach with new sand brought in from the river Foz supported on a rock-fill groyne, eighty metres long to the west of the beach. The balance floor for the new beach will have a width exceeding forty metres.



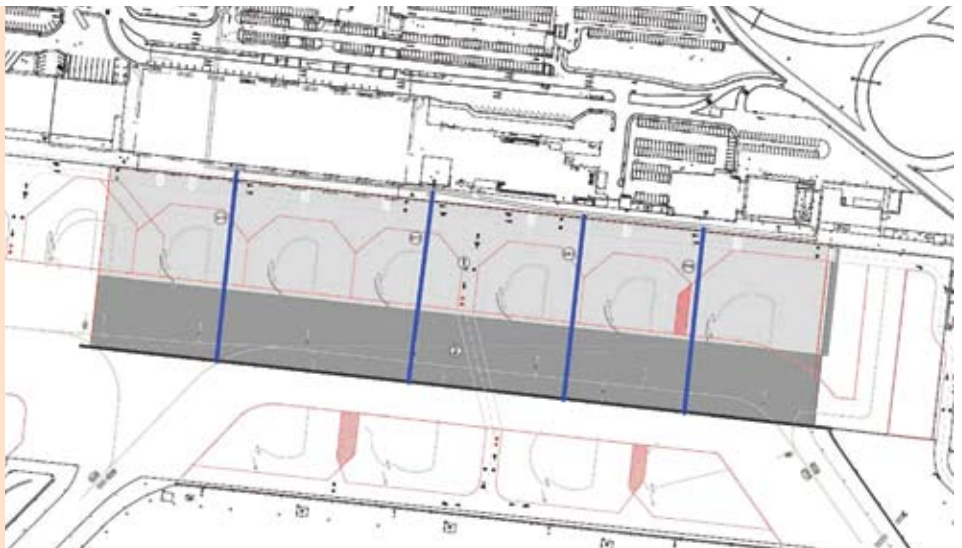
ELECTRICAL CONNECTIONS FROM THE IBERDROLA SUBSTATION IN ALICANTE AIRPORT

The purpose of this project was the construction of two new connection lines to the airport. The lines will begin at two 20 kV bus bars at the future IBERDROLA distribution transformer substation at El Alter and end at the new electricity power station and distribution centre at the airport. The route will be mainly along existing paths, thus minimising the effects on private third parties.



DESIGN OF THE AIRCRAFT CAR PARKS AT ZARAGOZA AIRPORT

This project contemplates the demolition of the oldest part of the aircraft car parks, the storage of demolition materials and reconstruction from the original land. Other project operations include the installation of a hydrocarbon separator, the replacement of primary runway lighting circuits from the car park to the power station and the updating of the apron access taxiway lighting.



DESIGN OF CAR PARKS EXTENSION IN THE IBIZA AIRPORT

The public parking extension project will resolve the lack of parking spaces by constructing an underground parking lot that will cover the airport's needs until 2020. This parking lot will have two floors, with each having approximately 37,000 square metres. The project includes the construction of a new surface bus parking lot and a garden area on top of the underground parking lot.



Eptisa worked at the principal Spanish airports during 2009, despite the drop of traffic at Spain's airports

At **airports**, Eptisa has continued working for the main Spanish airports in spite of the reduction of AENA operations caused by the fall in traffic in 2009. We continued working on the design of runways and aircraft car parks, with works supervision, quality control and works site safety at airports, together with airport operation studies for the works of large Spanish construction companies as well as the design for buildings and other facilities at Spanish airports within the AENA network.

During financial 2009 we continued working with Aena in the drafting of projects and technical support and works supervision at Spain's main airports.

Eptisa continues to be a yardstick in engineering services for transport infrastructure in Spain and the international market.

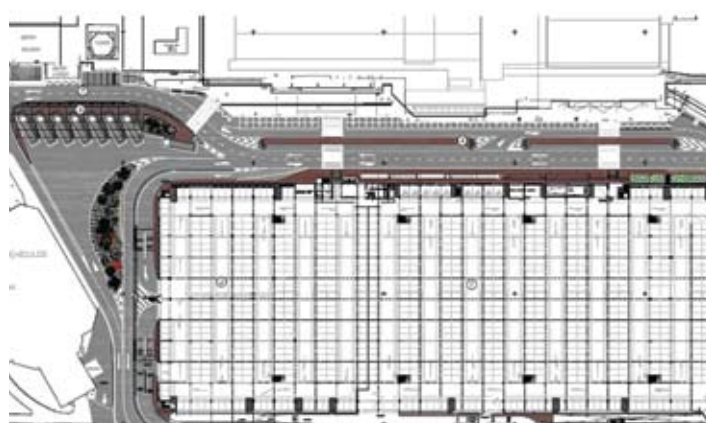
DESIGN OF PARKING BUILDING IN ASTURIAS AIRPORT

The project consist of the design of a building for exclusive use for parking, which will consist of a ground floor and two upper floors in order to satisfy predicted requirements until 2013, with 1,613 public parking spaces. The project contemplates an option for a third upper floor and a second expansion phase towards the airport power station.



DESIGN OF RUNWAY PAVEMENT PROJECT IN ASTURIAS AIRPORT

The project defines the action to take to repair the existing damage to the airport's runway pavement, the surfaces of which are cracked. This requires the prior analysis to establish the causes of the damage through geotechnical studies and robot inspections of the drainage system. The project scope includes the elimination of existing irregularities in the runway, repairs to the defective drainage and the construction of a piping bank under the taxiway for threshold 11. All this is to be carried out while guaranteeing airport operation and replacement of affected services (drainage, lighting and signalling).



NEW ELECTRICAL INTERCONNECTION GALLERIES AT ALICANTE AIRPORT

The purpose of this project is the definition of the works required for the construction of electrical interconnection galleries that complete the network designed in the Project for the New Air Terminal at Alicante Airport (NAT). This will make it possible to distribute electricity between the future power station, the distribution centre and the various NAT transformer substations by means of several redundant ring circuits. The scope includes the civil works, high and low-voltage installations, mechanical works and urbanisation jobs.

Water and the Environment

Eptisa is collaborating with public authorities in water resources and environmental plans to improve natural resource management, both nationally and internationally

Water and environmental activity increased during 2009 reaching 24% of turnover. In addition to Spanish projects, water-related activity in Europe has positioned us as a specialist consulting engineering company on an international level for the development of hydrological plans, engineering services and technical hydraulic works supervision, together with turnkey projects of waste water treatment plants.

During 2009, we participated with the administration in large-scale **water resources plans**, both nationally and internationally, providing engineering and technical support services as well as planning and study support, always employing cutting edge technologies.

In **Spain**, we collaborated with the Duero River Basin Authority in the studies, plans and management of the Water Resources Plan for the area, in accordance with the European Union Water Framework Directive. Throughout this year, we will continue collaborating in plan follow-up works and the implementation of measurement programmes.

Regarding water public domain management, we are working in the northern Spanish catchment basin on the *Support for the National River Restoration Strategy* project. As the first result of the project in 2009, the Basin Authority initiated the Bajo Sella rivers restoration project, which describes operations and works along the 20-kilometre stretch between the towns Canga de Onís and Ribadesella. Eptisa collaborated with the Ministry of the Environment in nine projects for the restoration of the northern catchment areas.

During 2009, we worked on the *Design and*

Development of Hydrographical Information systems for the Serbian Ministry of Agriculture and Water. With a two million Euro budget, funded by the European Union, this project will permit the development of a GIS (Geographical Information System) solution, based on ESRI technology for water resource management in the country.

Also outside Spain, we are collaborating in catchment basin management, as in the case of projects in **Bosnia Herzegovina, Romania and Balkans**, in which Eptisa provides support for the Administration in drawing up water resource management plans, transferring knowledge via mathematical models, space management and water quality. We are working on the Kura river basin management project in Turkey.

In **groundwater**, we continued working for ADIF, the Spanish Railway Infrastructures Authority, in groundwater surveys for railway infrastructure, such as the North-north east high-speed corridor, along the Burgos-Vitoria section. Also the Júcar River Catchment Authority awarded us works follow-up, data integration and hydro-geological surveys for the evaluation of the ground water deposits. We were contracted by the Andalusia Water Agency for consultancy regarding the behaviour and use of the hydro-geological units in the Huescar- Baza region.

In **water infrastructures**, special mention should be made of the IBERDROLA contract for the *detailed design for two of the largest hydroelectric plants* for this company in **Portugal**, specifically those of Gouveas and Padroselos located in the upper River Tamega basin and which are included in the National Reservoir Programme with High Hydroelectric

Potential and developed by the Portuguese government. In both cases, we design the geotechnical, hydraulic and constructions works of the hydroelectric heads, which consist of: dam, water circulation in tunnel, forced circulation, underground hydroelectric plant and return circuit to the river bed.

In **Spain**, Eptisa is continuing to work for large organisations in drawing up projects for improving, adapting and operating water infrastructures, amongst which mention must be made of the Andalusia Water Agency technical support services contract for the design of modification of the Viñuela Dam spillway to comply with new legislation.

We continue working for public administrations to provide support for infrastructure maintenance and operation, such as those for the Automatic Hydrological Information System (SAIH) Guadiana River catchment area

Throughout 2009, the Eptisa water and environmental activity increased to 24% of the total

and the safety engineering services for the reservoir dams at Santa Ana, Joaquín Costa, Oliana, Rialb and Guimets in the Ebro River Basin.

We have been working on improvement of the Water Supply and Waste Water Treatment Infrastructures Network, such as the project for the *"The Tajo-Segura Aqueduct"* to guarantee the supply of water resources from one catchment area to another and La Mancha Plain. Here, Eptisa designed the hydraulic



Operation, maintenance and conservation to guarantee the safety of the reservoir dams in Lleida, Tarragona and Huesca

Technical assistance for the design of Water supply Network in Toledo



Turnkey project for the waste water treatment plant at Campos del Río in Murcia



Study of waste water treatment in a sensitive area of the Doñana National Park



Construction of a landfill in Pirot, Serbia

We are specialists in turnkey projects for waste water treatment plants in Spain and internationally

infrastructures and is currently performing the technical support and overseeing constructions works.

On an international level, in **Bulgaria** we are carrying out the works supervision of the construction of a water treatment plant and water supply infrastructure network in the city of Sliven, implementing the project in accordance with FIDIC standards.

In **Romania**, Eptisa is the leading company in the water sector. In 2009, we developed projects that have benefitted over two million people through the implementation of sewage networks and water treatment plants as well as sewer projects for various municipalities throughout the country.

In **Serbia**, within the framework of the European Support Programme for the Development of Municipal Infrastructure, Eptisa carried out the consulting, technical assistance and works supervision for several supply and sewage projects in Balkan municipalities.

In 2009 we were fully involved in projects of **waste water treatment plants**. Eptisa provided the design and detail engineering services, installation, assembly, works supervision and operation of waste water treatment plants in Spain and abroad.

In **Spain**, we executed the turnkey waste water treatment plant projects at Campos del Río in Murcia and Ceredo in Asturias, the WWTP enlargement project at San Claudio in Oviedo and we are still working on the Ribera del Fresno WWTP in Badajoz.

We were awarded the Totana waste water treatment plant projects in Murcia, which

include the civil works detailed engineering, equipment assembly and installation and start-up. We are going to work on the Cuiña San Cibrao WWTP project in Lugo, for which we are undertaking the construction design, civil works and electro/mechanical detailed engineering design, equipment assembly and installation, start-up and operation during the guarantee period. This is in addition to the Carranza WWTP in Vizcaya, where we are working on the operation and maintenance services.

In Andalusia, we would like to emphasise the work for EGMASA, carrying out the study of the waste water treatment in a sensitive area of the Doñana National Park, which includes eight waste water treatment plants. The project comprises preliminary analysis and diagnosis surveys and the preparation of preliminary designs to ensure correct operation of these plants bordering the park.

In **Romania** and **Serbia** Eptisa is working on water treatment plants within programmes funded by the European Union. At the end of 2009, we were awarded the first turnkey project in Romania for the construction of the enlargement and refurbishing of a waste water treatment plant in Zimnicea.

In **solid waste management**, special mention must be made of the projects in Romania, Turkey and Serbia for the construction, expansion and refurbishing of landfills. In 2009 the Cannakale landfill in Turkey was officially opened, for which Eptisa executed the project design and works supervision. We also supported the administrations of Armenia, Azerbaijan, Byelorussia, Georgia, Moldavia, Russia and Ukraine in a regional project to improve solid waste management. We are

also working on landfill refurbishing and waste management in Spain.

In the **environmental** area, Eptisa is collaborating with public organism on environmental management programmes, urban and industrial waste treatment for contamination prevention plans. On the international scene, it is participating in programmes to provide support to the authorities regarding legislative changes and environmental plans of action.

As a consequence of our commitment to the environment, Eptisa is carrying out environmental impact assessment for civil works as well as tracking the quality of industrial waste water.

SUPPORT FOR THE NATIONAL RIVER RESTORATION STRATEGY PROJECT IN THE NORTHERN SPANISH CATCHMENT BASIN

The purpose of the project is the conservation and recovery of our rivers in order to fortify our cultural patrimony and place a value on the attributes and benefits that rivers give to the environment. All this is in consonance with the EU Framework Water Directive and the evaluation and management of flood risks.

Eptisa is developing the following activities: river section selection, environmental evaluation, the drawing up of Objective Image document, public participation, report preparation and lastly, the design of action projects, which include detailed cartography, geomorphology, hydrology, hydraulics and bioengineering.

In 2009, the Basin Authority initiated the Bajo Sella restoration project, which describes operations and works along the twenty kilometres stretch between the towns Cangas de Onís and Ribadesella.

Eptisa collaborated with the Ministry in nine projects for the restoration of the northern catchment areas.



INFRASTRUCTURE FROM THE TAJO-SEGURA AQUEDUCT FOR SUPPLY WATER RESOURCE IN THE MANCHEGA PLAIN

The purpose of the projects is guarantee the supply of water resource from one catchment area to another and la Mancha plain. Eptisa designed the hydraulic infrastructure and is currently performing the technical assistance and overseeing the construction works.

The objective of the Work includes the construction of a water distribution pipeline in order to guarantee water supply to a 58 population nucleus in La Mancha plain. Water used originates from Tajo-Segura aqueduct and provides water for domestic use to a population of 500,000 inhabitants. Long-term benefits include regeneration of underground aquifers because of lower water detracton

Eptisa activities was revision and analysis of demands and the needed supply; feasibility study for potable water treatment station; previous geological-geotechnical study; topographical work and redesigning; study for solutions in the water supply; environmental impact assessment; general planning of infrastructures; exploitation and control study; hydraulic system modelling.

The work in 2009 consisted of consultancy and technical assistance of the construction works from the Tajo-Segura Water supply network.



MODERNIZATION OF WASTE WATER INFRASTRUCTURES IN RUMANIA

The purpose of this project is to provide support to ACET SA Suceava, the regional water agent, to ensure compliance of the provisions proposed by the European legislation regarding environmental protection, guarantee management of European funds and the development of new projects in management and treatment of water and waste water in order to ensure cost savings.

This project will benefit five urban regions because of the contract for ten works that will be executed for the rehabilitation, expansion and construction of water supply and sewer networks, with a total value of over 120 million Euros for which Eptisa is responsible for the supervision.

The work includes the preparation of the bidding documentation, together with that relating to works and service contracts, providing specialised technical assistance during its implementation and the management of equipment supplies, providing support and training for the project execution unit (UEP) in order to prepare, implement and monitor the projects financed with external funds and the investments for phase II, including the review of the director plan for managing water and waste water from Suceava.



TECHNICAL ASSISTANCE FOR THE WORKS MANAGEMENT OF THE NEW DESALINATION PLANT IN BAJO ALMANZORA (ALMERÍA)

The purpose of the project is the construction of a new desalination plant in Cuevas de Almanzora, Almería. The plant will have a net production rate of 60,000 cubic metres per day employing a two-stage reverse osmosis process.

Eptisa is carrying out consultancy and technical assistance for the works management and the work includes supervision and tracking of the contractor's quality assurance plan, the qualitative and quantitative control of the executed work and the study of works modification proposals.



Building, Energy and Industry

During 2009, we concentrated our services on turnkey projects



Construction management of the Cultural Centre at the old Tabacalera Building in San Sebastian

During 2009, we at Eptisa concentrated all our efforts to providing engineering and building management services focused on guaranteeing that the construction of new facilities for our clients were in line with budget and deadlines.

We are specialist in engineering and architectural projects for the industrial and aeronautic sectors. In Andalusia, we executed the turnkey project for the construction of an Airbus A-350 component assembly plant for Alestis Aerospace. Eptisa carried out the design and works management, together with building construction and execution within the established dates and agreed costs.

Also for the **aeronautic** sector, Eptisa was responsible for the design and project management for manufacturing parts for the Airbus A-320 programmes in China, for the joint venture between Airbus and Hafei. This project is being executed in the city of Harbin, where the weather conditions converted the project into a challenge because of winter temperatures that can fall to -30 °C.

In the **commercial distribution** sector, we are continuing to work for companies with the greatest current extension of shops in Spain. Eptisa is handling the design and legalisation of the Zippy shops in shopping malls, in addition to project and site management to guarantee established costs and deadlines.

For **logistics and industry**, we designed the logistics platform projects in the Castile and Leon Region, a services area of 80,000 square metres. The works we carried out in Galicia, for the commercial zone in the Port of Vigo deserve special mention, providing technical

support and quality control in the construction management of the industrial buildings. In Andalusia we were active in the industrial sector, executing project management in the construction of the Parque Aletas in Puerto Real, Cádiz.

In the sector of facilities for **Major Events**, 2009 saw the inauguration of the La Llotja Theatre and Conference Centre in Lleida. This conference building with capacity for over 1,600 participants is an emblematic project in Catalonia, due to its unique design and construction. Eptisa was responsible for project and construction management.

Again, special mention must be made of the confidence placed in Eptisa by EXPO Zaragoza 2008 with the award of the technical management for the conversion works of the international exhibition enclosure in the Business, Leisure and Cultural Park.

The public administration entrusted Eptisa with the construction management of its **singular and public service** buildings and facilities, such as construction management for the new building that will house the new judicial seat of the Courts of Girona.

The export of our experience in design and construction management services is the key to activity development

In San Sebastian, the International Centre for Contemporary Culture awarded us the *management for the construction project of*

TURNKEY PROJECT FOR THE CONSTRUCTION OF AN AIRBUS A-350 COMPONENT ASSEMBLY PLANT FOR ALESTIS AEROSPACE IN CÁDIZ

This project, developed by the joint venture Eptisa-Elimco, is constructed on a 37,400 square metre lot on the Tecnobahía Technological Park in Puerto Real (Cádiz). This plant produces the work packets for the belly fairing and the tail cone of the A350XWB, the new Airbus passenger aircraft.

The installations have an above-ground constructed area of more than 19,000 square metres. These are distributed into the 13,000 square metre production building that is a metal structure with a maximum height of 14.4 metres and a free height of nine metres and the 5,500 square metre office area consisting of a prefabricated concrete structure. The project includes the fitting out with all the installations required for the production process, including floor flatness conditioners that are necessary in such an installation.

Eptisa design, manage, the building constructions and execution.



BASIC DESIGN AND PROJECT MANAGEMENT FOR AERONAUTICAL MANUFACTURING PARTS PLANT IN HARBIN, CHINA

Eptisa is responsible for the design and project management for the factory. The work consists of the construction of a manufacturing parts plant for the Airbus A-320 programmes for the joint venture between Airbus and Hafei, which is an aeronautical company with Chinese government participation.

The building will have a constructed surface area of 33,000 square metres can consist of clean area measuring 5,000 square metres, an industrial area and technical rooms of 23,500 square metres, together with a 4,500 square metre office area.

This project is being executed in Harbin, China, which is a city with weather conditions that have converted the project into a challenge because of the winter temperatures (-30 °C).

Eptisa is providing works management services, which includes the basic design engineering, together with purchase and construction management.



the Cultural Centre at the old Tabacalera. The works comprise the architectonic renovation of the old tobacco factory for conversion into a cultural centre. The project involves various spaces and uses, amongst which mention should be made of teaching and restoration workshops, a document centre and library and an auditorium holding 200/250 people.

In Girona, we worked on the project for the refurbishing and extension of the old *Santa Caterina Hospital in Girona*. The operation included executive project management, construction management technical architecture, works coordination, and quality control and environmental monitoring. The proposal required the refurbishing of an existing building, the old hospital, its church and the convalescence home, all historical buildings in the city.

Also in Catalonia, specifically in Barcelona, we collaborated with the Justice Department in the consultancy and management for the construction works for the "Quatre Camins" youth penitentiary centre in La Roca del Vallès with a capacity of 350 internees.

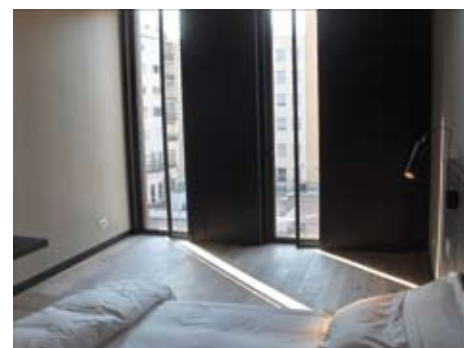
For the **leisure, sports and tourism** sector, Eptisa is working on the project for the works execution and management of the *Portugalete Sports Centre in Bizkaia*. The sports centre will have more than 17,000 square metres of indoor and outdoor sports facilities covering 3,000 square metres.

In Catalonia, we continue working for the hotel sector on the refurbishing of a 19th century building and its conversion into a five-star luxury hotel for the Alma Hotels chain. Eptisa carried out the design of the facilities, works management, project management and

Our specialisation in key sectors of the 21st century economy enables us to maintain our activity in spite of the worldwide reduction in building.

licence review, together with the emergency and safety plan. The works are based on safeguarding the main facade and the remodelling the structure in order to adapt it to the new requirements.

In the **energy** sector, we mainly worked on providing our engineering services for the development of alternative energies. We were active in the construction of photovoltaic plants in Spain and internationally. Outside Spain, we worked with the administration on the study and planning for alternative energy implementation.



Refurbishing of a 19th century building and its conversion into a five stars luxury hotel for the Alma Hotels Chains



Refurbishing and extension of the old Santa Caterina Hospital in Girona.

THE LA LLOTJA THEATRE AND CONFERENCE CENTRE IN LÉRIDA

Eptisa was responsible for construction management for the Llotja Theatre and Conference Centre, which was officially opened in 2009. The rectangular floor building has an area of 31,500 square metres and includes an auditorium with capacity over 1,200 persons.

Works management included technical assistance for the property during the project drawing-up, works licence and contractual documentation phases. During contracting we supervised the tender documentation, the actual bidding and the opening of escrows, together with the evaluation report. Finally, during the works execution phase, Eptisa provided the support in the coordination of the participating agents in order to guarantee works deadlines, quality assurance and costs.



NEW BUILDING FOR THE GIRONA COURTS

This is a newly constructed building that houses the legal seat for the Girona Courts and consists of a ground floor and five other floors for the courtrooms and offices, with two basement floors for parking areas and archives.

Eptisa is responsible for the works management, which consists of executive project management, facultative technical architect assistance, construction management, works coordination, works quality assurance and environmental monitoring.



Quality and Industrial Safety



»

Quality control of the construction works of the cable-stayed bridge over the Tajo River in Talavera de la Reina.

Eptisa is the main inspection and quality assurance body for civil works, building and industry

Eptisa is the main inspection and quality assurance body within the Spanish market for civil works as well as buildings and industry. The experience gained over more than fifty

test information and results can be obtained practically in real time (Informeslab®) increasing process efficiency through the option of making immediate decisions with respect to data obtained.

The focus in industrial quality and safety is on the development of new information technologies, thus providing the client with an online results system so that immediate decisions can be made regarding the data obtained

years of operations has endowed Eptisa with added value in the quality control and industrial safety market that our clients require.

The network of approved laboratories available at Eptisa enables us to attend to our clients' requirements in Spain and other European countries.

As with the rest of Eptisa, the focus in quality and industrial safety is on the development of new information technologies, thus providing the client with online links so that

Our laboratories understand their work as a basic element in the sustainable development of society, which transcends technical concepts and actively involves them in social development, something that has positioned us as an touchstone for the future of the sector and infrastructure improvement in the countries in which we work.

QUALITY ASSURANCE FOR THE EXTENSION WORKS FOR THE BREN EN CEE PORT DOCKS (A CORUÑA)

The service consist in internal quality assurance and execution of environmental monitoring of the extension works in the Port of Brens-Cee (A Coruña).



1. Geological follow-up during the repair of the slope of the A-6 dual carriageway, kp 419 (Trabadelo-León)



2. Geotechnical study for the high-capacity Sarria-Monforte line. Section I: Sarria-Noceda



3. Quality Control of the High Speed Rail Line Madrid – Barcelona – French Border. Marmaya Viaduct



4. Quality control of line 9 in Barcelona subway



5. Endesa station



TECHNICAL ASSISTANCE TO QUALITY CONTROL FOR CONSTRUCTION OF THE LLOBREGAT BASIN DESALINATION PLANT

Eptisa worked on the quality control in the construction works for the Llobregat desalination plant, which was officially opened in June 2009 and, in 2010 was presented with Global Water Awards in recognition of being the best desalination plant of the year.

This plant, which provides service to 4.5 million inhabitants in the Barcelona area, is the biggest of its kind in Europe providing urban supplies.

This desalination plant is one of the largest infrastructures ever constructed in Catalonia in recent years and can produce up to 200 million litres of water per day, which is 24% of the Barcelona area consumption. The construction cost 230 million Euros, with 75% being paid by European funds.



TECHNICAL ASSISTANCE TO QUALITY CONTROL OF THE CONSTRUCTION OF THE UNDERGROUND WORKS FOR THE ALMONAZAR RIVER IN THE TOWN OF SAN JOSÉ DE LA RINCONADA

Quality control for construction material at the manufacturing plant and onsite testing to verify their correct execution and periodic verification of the production centres (concrete mixing plants, agglomerate plants and prefabricated parts plant etc) for the channelling and underground works for the Almonazar Arroyo where it passes San José de La Rinconada and subsequent urbanisation of its previous riverbed.



QUALITY CONTROL OF THE CONSTRUCTION WORKS FOR 9.3 KILOMETRES OF THE HIGH-SPEED RAILWAY LINE JOINING SEVILLE AND CÁDIZ (SECTION: EL CUERVO-JEREZ AIRPORT)

Onsite quality control of materials at the manufacturing plant and onsite testing to verify their correct execution and periodic verification of the production centres (concrete mixing plants, agglomerate plants and prefabricated parts plant etc) for the construction works for 9.3 kilometres of the high-speed railway line joining Seville and Cádiz (section: El Cuervo-Jerez Airport).



QUALITY CONTROL OF THE URBANISATION WORKS AT THE SABADELL BUSINESS PARK

This is the largest business urbanisation project in the Occidental Valley from Barcelona. The Sabadell Business Park will be transformed into an economic activity area with 449,512 square metres of land, of which 65,896 will be for private installations and 222,727 for public installations, together with over 3,500 parking spaces.

In addition, this complex combines quantity architecture and urbanism with the strictest sustainability criteria. A strict environmental plan will be followed to preserve the natural surroundings. The project provides 40% of its space for green belts and the buildings will incorporate consumption-reducing systems that employ renewable energies. The Sabadell Business Park will also include a range of common services, such as restaurants, day nursery, gymnasium, hotel and shops in order to provide the companies with solutions to enable them make their job commitment compatible with their family and private responsibilities.



TECHNICAL ASSISTANCE FOR THE QUALITY CONTROL OF THE CONSTRUCTION WORKS FOR THE NAVARRA HIGHWAY A-15; SECTION: CUBO DE LA SOLANA – LOS RÁBANOS (A-II) IN SORIA

Technical assistance for control and safety of the works for the Navarra dual carriageway (A-15); section: Cubo de la Solana – Los Rábanos (A-11). CN-111 from Madrid to Pamplona and San Sebastián, kp 205.350 to 214700 in Soria Province.

The works consist of works supervision executed by the company Rover Alcisa for the Ministry of Development (Secretary General for Infrastructures. Highways Department. State Highways Division in Castilla y León Oriental) consisting of the construction of an 8.5 kilometre section of dual carriageway, which will include a junction with two roundabouts and fifteen structures.



QUALITY CONTROL FOR THE CONSTRUCTION MATERIALS FOR THE NEW BARCELONA AIRPORT TERMINAL AND ACCESS

The new Prat de Barcelona airport terminal was officially opened in 2009.

The official opening of T1 puts into operation the most emblematic project in the expansion of the Barcelona airport and completes three years of works, resulting in one of the biggest civil engineering projects carried out in Europe, which conjugates advanced technology, environmental respect and high-quality service.

T1 is a building incorporating great logistic and technical complexity and over 100,000 passengers pass through it every day. The architectonic proposal, which was executed from the project drawn up by Ricardo Bofill, combines an international, multi-culture character with the luminosity and ambient warmth of Mediterranean architecture, which is going to be one of the references for future airport terminals.

The 544,066 square metres of the Barcelona airport T1 is distributed into eight large areas: the roadways, public parking, the inter-mode vestibule, the Plaza, the processor and the north, south and longitudinal fingers. There are two public parking area containing 11,950 parking spaces.



QUALITY CONTROL OF THE CONSTRUCTION WORKS FOR THE HIGH-SPEED LINE TUNNEL BETWEEN ARANJUEZ AND ONTÍ

The works consisted of the construction of a twelve-metre diameter tunnel, 3.5 kilometres long (700 metres in false tunnel and the rest in excavated tunnel), followed by 260-metre long concrete viaduct.



QUALITY CONTROL FOR THE WASTE WATER TREATMENT PLANT FOR THE ALJARAFE II-GUADALQUIVIR. T. M. PALOMARES DEL RÍO, SEVILLE

Quality control for materials, manufacturing centre and onsite testing to verify correct execution. Periodic verification of production centres (concrete mixing plants, agglomerate plants and prefabricated parts plant etc).

Analysis of waste water treatment plant exit water, final functional and performance testing of installations and equipment for the extension works for the waste water treatment plant for the Aljarafe II-Guadalquivir. T. M. Palomares del Río urban expanse (Seville).





Works quality control for the conditioning of highway C-31 along the section : La Talladega d'Empordà – Torroella de Fluvià.



Madrid- BCN- Frencnc border high-speed line



Environmental monitoring of the extension works for the commercial west docks in the Port of Vilagarcía de Arousa in Pontevedra

QUALITY ASSURANCE FOR THE MATERIALS AND FACILITIES FOR TWO PAVILIONS AT THE BARCELONA GRAN VIA CONFERENCE AND EXHIBITION CENTRE.

Eptisa, which has already participated in previous phases of this project is going to handle quality control for pavilions 5 and 7.

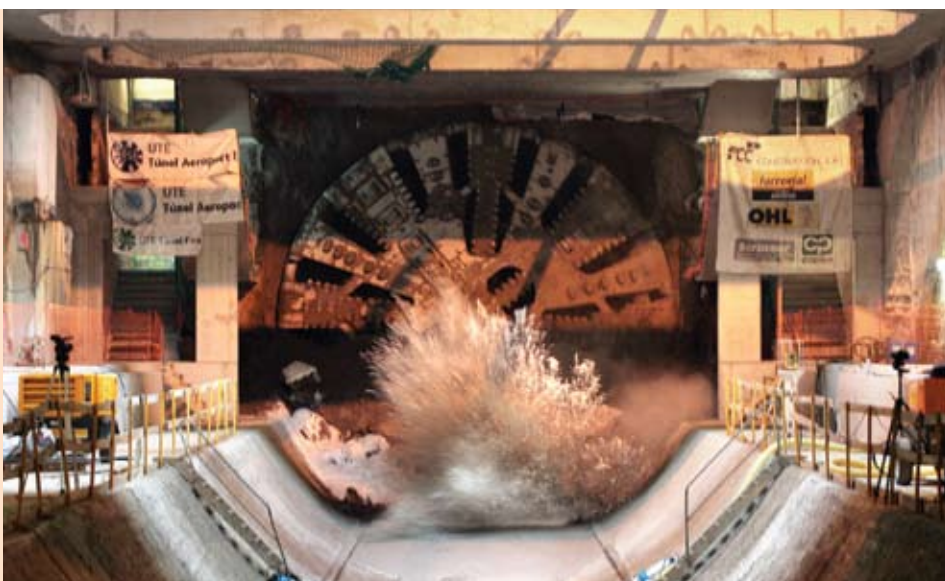
The project will provide a total constructed area of 368,000 square metres of covered exhibition and over 5,000 car parking spaces, thus enabling the Barcelona Exhibition Centre to become not only one of the largest in Europe, but also being the leader in design, technological innovation and services.



TECHNICAL ASSISTANCE AND QUALITY CONTROL FOR THE CONSTRUCTION OF THE LINE 9 OF THE BARCELONA SUBWAY.

During 2009, took part in the quality assurance for the infrastructures of the section Parc Logistic- Airport of Line of the Barcelona Subway, together with the quality assurance of the architecture and station buildings.

The line 9 with its length of 47.8 kilometres will be the longest underground line in Europe and will connect strategic parts of the city of Barcelona. It will include 52 stations, and has a construction budget of 6,500 million Euros.



TECHNICAL ASSISTANCE FOR CONTROL AND SAFETY QUALITY FOR THE NORTH-NORTHEAST HIGH-SPEED LINE; SECTION: VENTA DE BAÑOS-PALENCIA-LEÓN

The works consist of works supervision from the construction executed by the company Aldesa Construcciones for Spanish Railway Authority. The project consists of platform for ten-kilometre long high-speed line section that will include eleven structures.



TECHNICAL CONSULTANCY AND ASSISTANCE FOR QUALITY CONTROL FOR THE CONSTRUCTION PROJECT OF THE INFRASTRUCTURE FOR PHASE I OF THE SOUTH METROPOLITAN BYPASS. SECTION 24: ORTUELLA-PORTUGALETE JUNCTION. SECTION 2B: SANTURIZI-PORTUGALETE SECTION 3A: PORTUGALETE-TRAPAGARAN.

The activities developed during this consisted of the preparation and tracking of the quality assurance plan for the works, consultancy and technical assistance in order to carry out quality assurance and quality control for materials and works execution, structure load testing execution and assistance to the facultative management in materials quality assurance.



Instrumentation and Monitoring Engineering

Eptisa is at the forefront of technological development for infrastructure instrumentation and monitoring

Throughout 2009, our clients have confided their large-scale works undertaken in the country to our instrumentation and monitoring services. Eptisa worked on the emblematic works of ADIF (Spanish Railways Infrastructures Authority). We continue to be the reference in hydraulic infrastructure monitoring and we have taken part in numerous urban works. The application of new technologies and the capacity for innovation in systems throughout the year are the key to our good outcome.

We have participated in geotechnical and structural (dynamic auscultation) monitoring works for operations on the main high-speed railway lines in the country

Special emphasis should be placed on **geotechnical and structural auscultation** for the large railways infrastructures works, such as Madrid – Cuenca – Valencia high-speed railway Regajal tunnel and the Barcelona – French border high-speed tunnels at Sarria de Ter and Cavorques. Also the control of newly constructed track platform on the Orense – Santiago high-speed line, and the viaducts on the Madrid – Valencia high-speed line, together with monitoring of the behaviour of expansive

soils on the high-speed lines at Pont de Candí and Pallaresos.

The technological milestone of 2009 is the entry into service of a distributed **fibre optics system** for monitoring continuous tunnel deformation for ADIF. This year, it was deployed in the tunnel on the Madrid – Zaragoza – Barcelona – French border high-speed line along the Hospitalet – La Torrasa section. This pioneering system in Spain places Eptisa at the forefront of technological companies for monitoring railway infrastructures.

In **urban works**, Eptisa undertook the monitoring for the extension of the Madrid Subway Line 2 at Las Rosas and the auscultation works for the new high-speed railway tunnel at Calle Serrano in Madrid for ADIF and the continuation of the works for Barcelona Subway Line 9.

In **structures and special testing systems** for infrastructures, during 2009 we worked on the dynamic testing of the structures for the Madrid – Cuenca – Valencia high-speed line, together with routine testing for the National Railways Department, in addition to carrying out vibration monitoring in the Port of Barcelona and its district 22@.

In the **hydraulic works** sector, Eptisa is a reference in both safety control and maintenance as in dam monitoring work. We participated in the Lechago, Ordunte and Belesar dams, carrying out the auscultation

In 2010, technology will mark the new infrastructures sector. We have been investing in R&D for many years so that we can provide our clients with innovative systems for monitoring and control

and automation works. 2009 saw the termination of the works for the Melonares and Breña II dams in Andalusia. We continue working on our usual tasks of dam maintenance, improvement and monitoring for Catchment Area Authority, Canal de Isabel II (Madrid Water Board) and Eon.

In the **water cycle**, we intervened in maintenance works for the monitoring systems to control the energy efficiency installed in the eco-city of Valdespartera in Zaragoza.

In 2009, the **Geo-referenced monitoring system** was put into operation, together with an automatic topographic system in the subway works in Barcelona. This is a software tool for geo-referenced monitoring that implements measurement systems via motorised topographic equipment.

For Eptisa, the future lies in the application of **new techniques**, for which reason it has created a specific area of development for generating greater potential and technological differential in the infrastructure market. Similarly, we shall continue working on high-speed line works and on the maintenance and control of hydraulic infrastructure with our monitoring, testing and control system services and products.

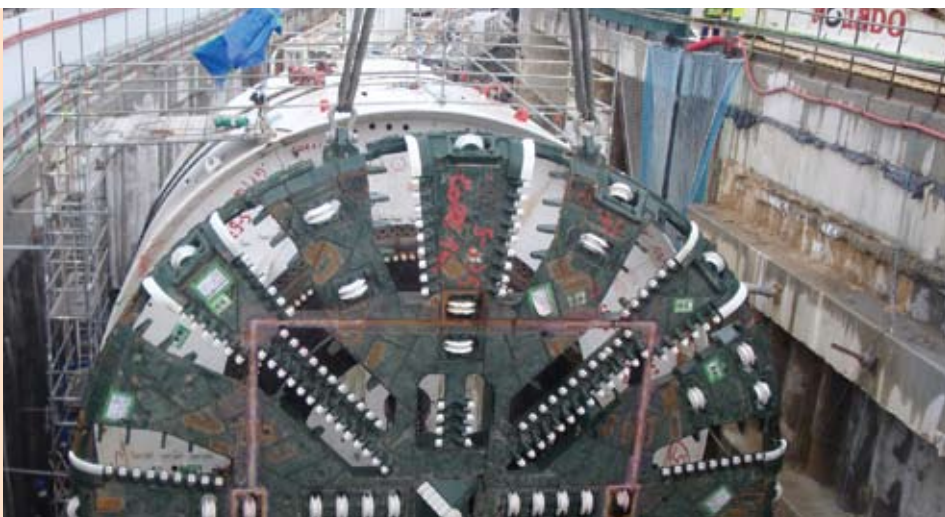
ORDUNTE DAM MONITORING

Eptisa carried out the monitoring and automation systems services on the Ordunte dam for the Bilbao Council during 2009. After 75 years in service, this dam, which supplies almost 70% of the Bilbao population has been fitted with a control system for all parameters that are transmitted over the Internet to the offices of the Council's Works and Service Department.



PLATFORM AND TRACK CONSTRUCTION FOR THE RAILWAY CONNECTION BETWEEN THE ATOCHA AND CHAMARTÍN STATIONS IN MADRID

The works are for the development of a monitoring plan, together with onsite installation and instrumentation monitoring during works execution for the 7.4-kilometre tunnel, using a tunnel-boring machine (EPB). We were given this contract by the joint venture AVE TÚNEL SERRANO (Dragados-Fcc-Tecsa-Copisa) and the works consist of the continuous monitoring of structure and the surrounding that might be affected by the tunnel construction within a highly dense area of buildings and infrastructure.



CONSULTANCY AND TECHNICAL ASSISTANCE SERVICES FOR LOAD TESTS IN THE RECEPTION OF BRIDGES FOR THE LEVANTE NEW HIGH-SPEED RAILWAY ACCESS, MADRID-CASTILLA - LA MANCHA - COMUNIDAD VALENCIANA - REGIÓN DE MURCIA. SECTION: GABALDÓN-SIETE AGUAS-VALENCIA-ALMUSSAFES

Within the contract framework of "Consultancy and technical assistance services for load tests for the reception of bridges for the Levante new high-speed railway access, Madrid-Castilla - La Mancha - Comunidad Valenciana - Región de Murcia. Section: Gabaldón-Siete Aguas-Valencia-Almussafes", we received the contract from the Spanish Railway Authority for carrying out the main inspections, riverbed, together with dynamic and static load testing for all Railway line viaduct and underpass structures for the cited high-speed line, prior to putting into service. All the works were developed following the IPTF-05 specifications.



MONITORED AUSCULTATION SYSTEM FOR CONTINUOUS DEFORMATION MONITORING USING FIBRE OPTICS SENSORS

EPTISA carries out the implementation of a monitored auscultation system for TIFSA for continuous deformation monitoring inside the tunnel on the Hospitalet – La Torrasa stretch, within the framework of the contract for “Services for the post-construction instrumentation, auscultation and monitoring of the Madrid – Zaragoza – Barcelona – French border high-speed line entrance tunnels to Barcelona, which it has signed with Spanish Railway Authority. The final goal of the project solution is the continuous, monitored distributed auscultation using an automatic autonomous system, based on new fibre optics sensors that are pioneers in Spain, which allow the tracking and verification of the tensile-deformational behaviour of the tunnel along the full length of the infrastructure during the operation phase



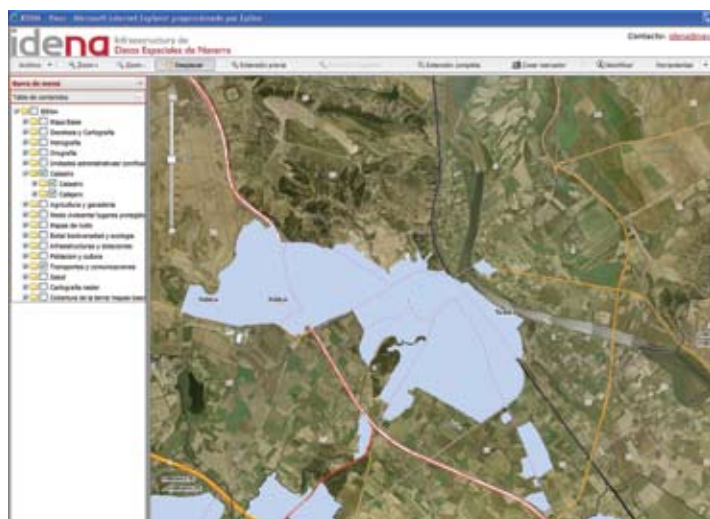
MONITORING PLAN FOR UNSTABLE SLOPES AND EMBANKMENTS IN THE RAILWAY CONVENTIONAL LINE NETWORK (2008 – 2010 SURVEY)

EPTISA. developed the sounding plan for slopes and embankments for Spanish Railway Authority, which basically contemplates the installation of devices in order to expand the monitoring area or replacement of those that have become non-operational, their maintenance and follow-up surveys, the data processing in a uniform format for all areas and the definition of safety monitoring states or thresholds. Since the beginning of the sounding plans and during a fifteen-year period (1991 – 2006) the monitoring tasks were commenced for ten unstable points of the network. For a two-year period from 2008, nineteen new unstable points were added, with special mention of the points on the Madrid-Hendaya (Zegama, Ormaiztegui, Inoso), Castejón de Ebro-Bilbao (Oiardo, Aloria), Bilbao-Miranda de Ebro (Lekamaña), Zaragoza – Barcelona (Montagut, Almacelles), Madrid – Sevilla (Alcázar de San Juan), Zamora-A Coruña (Carvajales de Alba) y Sevilla-Huelva (Santiponce) lines.





Information technology



Investment into technology and innovation is the key to recovering growth and sustain it in an environment of world recession

Our information technology activity during 2009 paid special attention to our client's requirements, providing solutions and products that optimise costs, productivity and resources in order to confront moments of uncertainty. This was the key to maintaining stable results from our activity in geographic information systems and new technologies

The Association of Electronic Companies, Spanish Information Technologies and Telecommunications (AETIC) announced that in 2009, the IT-sector experienced a 9% fall in turnover. This information reveals the crisis that Spain is currently suffering. However, in order to return to a growth situation in this environment investment in technology and innovation is required.

Geographic Information System is the technology that allows geo-referenced information in the company to be organised, analysing the attributes and displaying the results on a map that aids decision making. Our product and solution, data and professional services are orientated towards sectorial applications in order to resolve specific needs within each area of activity.

With respect to new technologies, Cloud Computing permits the freeing of IT resources and harnessing of network services, contents and applications in order to optimise infrastructure maintenance and organisation development.

With the **Enterprise Search Systems**, companies can organise and facilitate access to information both inside and outside the company, thus increasing productivity and taking advantage of synergies.

GEOGRAPHIC INFORMATION SYSTEMS

We continued to work closely with our partner and technological leader, ESRI Inc., throughout 2009 in the promotion, distribution, development and training associated with the geographic information systems in the ArcGIS family. In spite of the situation, ESRI continues to invest in R&D and, last year it caused surprise with new technological versions that changed the concept of these systems and brought them to the public at large with applications and content in mobiles and social networks, following the trends in Cloud Computing.

In Spain, we also decided invest in **innovation** and the search for solutions



The offer of solutions and products that optimise costs, productivity and resources in order to confront moments of uncertainty have been important in maintaining our results in a year in which the IT sector in Spain underwent a significant drop

for our clients. Last year, collaboration agreements were signed with Microsoft for the development of a solution to bring the benefits of integrating SharePoint with geographic information systems to organisations with require analyse and publish geo-referenced information.

We have developed a solution with the company DIGI, the leader in photogrammetric tools, to provide our clients with an application for maintaining geographic information up-to-date within the ArcGIS software.

We continue working with the leading IT companies in order to integrate GIS functionality into ERP, CRM and Business Intelligence applications for managing and analysing geographically-attribute information.

We presented the **Base Map solution** at the ESRI Spain User Conference, which is an example of public-private collaboration between the National Geographic Institution of Spain and ESRI. Base Map is the cartographic database covering all Spain, designed to aid clients in running GIS applications while avoiding the arduous task of acquiring, modelling and maintaining the data so that they can dedicate their efforts to functional definition or corporate information within their business or organisation.

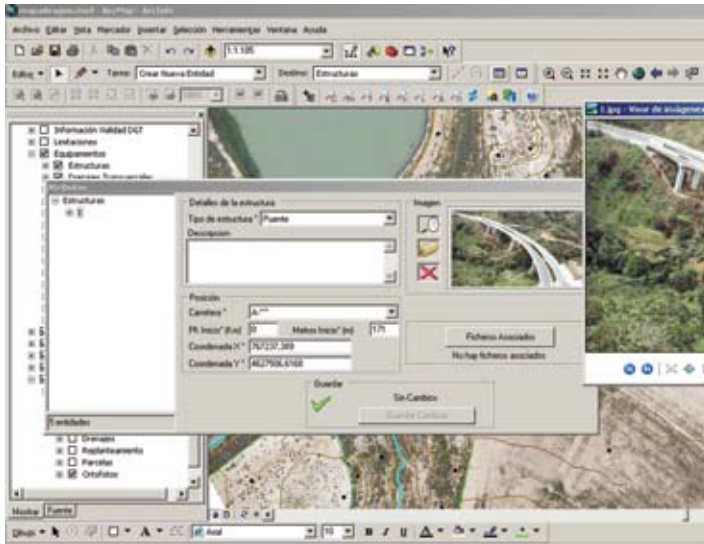
The **Public Sector** continued to be the reference market in 2009. Despite budget cutting, there was still the need to provide the citizens with services. To this end, we sought creative commercial solutions that enabled infrastructure to be maintained. Thanks to corporate licensing agreements,

clients were provided with the necessary software and services on demand at a fixed price for several years.

Amongst the more significant projects with the public administration in 2009 was, the “GIS for Highway Management in the Aragon Region” for the Aragon government. Mention must also be made of the IDENA cartographic portal project for the Navarra government, which provides access to all the region’s geographic information via a simple, functional Internet application. We designed the “Geo-culture” portal for the Ministry of Culture for the display and consultation of cultural elements, such as museums etc.

We also collaborated in the implementation of the database for storing MGCP project information and the development of a viewer for querying it. The MGCP is the Multinational Geospatial Coproduction Programme in which a coalition of nations is participating in the production of high-resolution vector data. All the data producers store the information in the International Geospatial Data bank for exchange and cartographic use.

In 2009, a geographic information system for incident control and management was



GIS FOR ROAD STRUCTURED NETWORK MANAGEMENT IN THE ARAGON REGION

This is an application developed for the inventory of track elements, accident and incidents positioning. It also resolves management and monitoring of cameras, panels, measuring gauges and weather stations that form part of the Structured Network. The project includes an application for data acquisition by the maintenance concessionary companies, a telematic system for transmitting the information to the centre and a Web viewer for General Management consultation.



SPATIAL MANAGEMENT INTEGRATED IN THE HEALTH INFORMATION SYSTEM OF THE CASTILLE Y LEON GOVERNMENT

The objective of this project is to integrate spatial information into the health information system of the government in order to manage resources taking into account the geography attribute where it is taking place. The work consisted of developing a complete solution that includes the data model definition to the development of a health resource portal (Website) for the citizens, together with a portal in the Intranet integrated with Enterprise Information System, which provides analysis and planning tools. This project has enhanced public care, together with resource management and health planning, all because of the GIS tools that are capable of analysing and presenting the temporal and spatial thematic data in a manner suitable for making decisions.

implemented in the Madrid Emergency Control Centre in the **civil emergency and protection** sector.

Within the **defence** sector, we continue working for the Ministry of Defence providing corporate application support. In 2009, we developed a GIS viewer for the EADS Europter, a GIS interface-based tracking and monitoring system integrated into the cockpit.

In **water**, we worked with engineering companies and other collaborators on the development of systems that assist in hydrologic planning and catchment management. Corporate GIS was implemented in the Guadiana Catchment Area Authority, integrated into the organisation's information systems. We collaborated with the European Commission and the local administration in Serbia on the design and development of hydrographical information systems for the Serbian Ministry of Agriculture and Waters, which allow the development of a GIS solution (Geographic Information

System), based on ESRI technology for the integral management of the country's water resources.

In the **logistics** sector, mention must be made of the Corporate GIS project for CO-RREOS (National Postal Service). The solution is for the planning of mail distribution throughout Spain. Our experience with this project enabled us to seek solutions and invest in products in order to apply the knowledge to other distribution companies.

Also in **transport**, we continue working for AENA (Air Navigation and Airport Operator from Spain) on several projects in which GIS can assist the management of airports, cargo and commercial areas. But above all, we would like to make special mention of the project to implement a GIS for the Air Navigation Department.

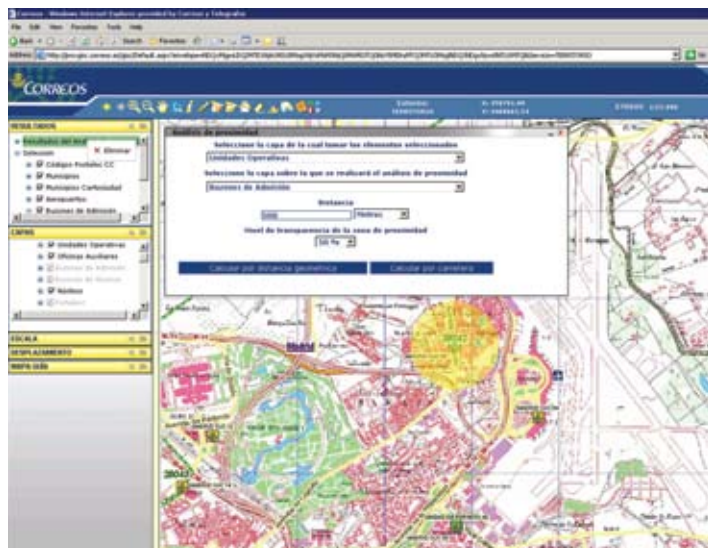
The alliance with the company **Trimble**, a leader in data acquisition and collection equipment, went far beyond the expected

objectives and exceeded one million Euro in contracting. The varied, full range of Trimble cartographic and GIS products resolves all users' needs through a combination of GPS collectors and topographic products. The robust Trimble equipment provides real-time and post-processing precision of between one centimetre and five metres according to the project purpose and requirements.

ENTERPRISE SEARCH SOLUTIONS

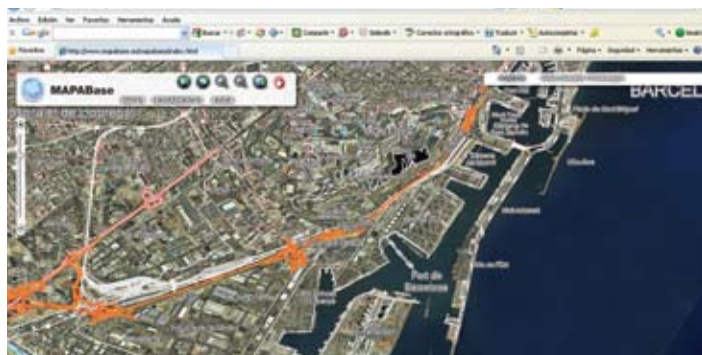
Eptisa has positioned itself as an expert company in business solutions for information management and searching on both Google and Microsoft technologies. During 2009, we developed a fast search engine for the Secretary of State, the European Union, the Ministry of Foreign Affairs and the Permanent Spanish Representation in Brussels.

The solution consisted of the fast search engine on a Microsoft Office SharePoint Server distributed deployment and a BRS



ENTERPRISE GIS FOR SPANISH POST COMPANY

The project consists of GIS development for logistic planning throughout Spain. Surveys are carried out on an enterprise, geo-referenced database for the location of offices, distribution centres and service concentration in both built-up and urban areas. It also provides help in making decisions for route design and analysis for any type of distribution (on foot, vehicle and mail drops etc). The system contemplates and is capable of resolving the display and management of the telecommunications infrastructures of Correos Telecom.



MAPA BASE. CARTOGRAPHY DATABASE PRODUCT READY TO USE BY GIS APPLICATION

This is the cartographic base covering all Spain, prepared to facilitate clients with the putting into operation of GIS applications, the arduous and costly task of acquiring, organising, serving and administering/maintaining the geo-information so that they can apply their efforts to the operational or corporate information within their business or organisation.

Mapa Base permits access to generic and common-use cartography within the spatial scope of the entire Spanish territory and makes data sources and contents more accessible to ESRI software clients. It is a solution that combines software, data and application into a single product. The solution comprises a cartographic information source, which is the 1:25,000 scale CNG topographic map and the orthophotos generated in the PNOA (National Aerial Orthophotographic Plan) project, a standardised data model, scale control, standard symbology, map services with efficient data access and a Web viewer for consulting the available data or determining specific locations with the new client technologies in Web 2.0.

Access it at www.mapabase.es

document manager. The search engine locates and filters all the documentation distributed between Madrid and Brussels, independently of source and locations. Its developed functionality achieved transparent user access to the shared documentation between REPER and SEUE, accelerating work flows in which relevant document localisation is required.

NEW FEATURES FOR 2010

A new ESRI partner model is to be implemented during 2010 with the objective of moving to a framework of collaboration and commitment that will enable us to improve market segmentation, more efficiently plan action, jointly promote sales and exploit market successes that acquire global dimensions from now on.

One of the most outstanding advances for the coming year is going to be the launching of ArcGIS.com, the new ESRI social network, the goal of which is to disseminate geographical information system potential

and its benefits in all public and private areas.

ArcGIS.com will be a meeting point for all professionals involved in information technologies, where they will be able to share knowledge, promote their solutions and find data and services that are of use in their applications.

Lastly, we must not forget how ESRI technology adapts to the most ambitious technological solution implementation paradigm of the last few years, the Cloud Computing model.

In this type of computing, everything that can be provided by an information system, such as ArcGIS 10, is offered as a service so that the users can access all the available services in "the Internet cloud" without the need for management knowledge for the resources they are using. As in Web 2.0 and other recent concepts, cloud computing is a concept that incorporates software as a service that those who trust in the Internet

to satisfy user computing requirements have in common. The cloud computing concept began with the big Internet service providers, such as Microsoft, Amazon AWS and others that constructed their own infrastructure.

Specifically, through an agreement with AMAZON, in 2010 ESRI will present the possibility of using ArcGIS 10 in the cloud computing mode. Client benefits will be immediate, from payment for using the hardware resources to the reduction of times required to put new projects into operation, without ignoring the improvement in that ESRI guarantees an optimised, saleable base configuration.

Health

Eptisa Salud Casta has now passed the 900-bed figure in Spain and is a reference in the mental health sector

Following the objective set for 2009 of strengthening the mental health line, the projects begun in 2008 were put into operation, establishing the consolidation of projects entering service in the second half of 2009 as the objective for 2010: CASTA Guadarrama and CASTA Asturias.

RESIDENTIAL MANAGEMENT

RESIDENCIAS NOSTEM

Through our participation in the company Residencias Nostem in the Basque Country, the two Arrigorriaga and Balmaseda centres entered service during July and September respectively. This complies with the objectives established for 2009, increasing our management to 372 more beds in the Basque Country.

In both we have 80% of the beds officially approved with BIDEAK, which were 100% occupied at the closure of the financial year, with the free beds 20% occupied.

CASTA ASTURIAS-LANGREO

Likewise our new Asturias centre opened its doors in August, with the official opening taking place on the 21st of October 2009 by the President of the Regional Government, Mr Juan Ramón Álvarez Areces, together with the presence of the Social Welfare Minister, Ms Noemí Martín, and the ERA Manager Mr Faustino Álvarez Fonseca.

The opening of centres in Guadarrama (Madrid), Basque Country and Langreo (Asturias) triplicates the number in one year

This project includes a shareholding by SADIM (the Asturian Society for Mining Diversification) belonging to the HUNOSA Group, and support from the Langreo Council, the Ministries of Health and Social Welfare in the Principality of Asturias. The home is partially subsidised by the Economic Reactivation Programme for Coal Mining Areas and brings together non-speculative business principles and the development of a social service also embodied in the approximately 100 full or part-time jobs that this centre will create when fully occupied, all with stable job contracts and most living in the mining towns.

This will increase our project by 120 beds and 30 in the day-care centre. At the 31st of December 2009 the agreements signed with the administration were:

- ERA psycho-geriatric beds
- ERA normal beds
- Ministry for Social Welfare

CASTA GUADARRAMA

Our new centre was opened last August on the premises of an old hospital in

Guadarrama, in the Sierra de Madrid. After the refurbishing and conditioning works, the home has 160 beds distributed in hospital care units for medium and long-stay patients with psychic disabilities.

During 2009 and since entry into service, agreements have been reached with the following organisations for bed occupation:

- AMTA: Madrid Agency for Adult tutelage
- SESCAM: Castilla la Mancha Health Service
- ADESLAS

CASTA ARÉVALO

The Arévalo centre maintained occupancy above 90% during the whole year, including the renewal of agreements with public authorities and insurance companies. Collaboration work with universities has led to training programmes in psychology, occupational therapy and logopaedia. In addition, there is the possibility of grants and scholarships for courses and specialised Masters Degrees.

PHARMACY UNIT

Within the specialised health consultancy, the contract for managing the programme for providing Methadone Chlorohydrate was extended with the Madrid Council Institute for Addiction, so that CASTA manages the production, preparation and prescription of this substance.



2. Inauguration of Casta Langreo Centre

1. Casta Langreo Centre

3. Facilities

Through this project, our health team manages drug-dependency care centres (CAD), with the establishment of the quality assurance standards to apply during day-to-day operation.

TRAINING

In order to be a reference in the mental health sector, training, innovation and technology are essential. CASTA training plans are a main objective. During 2009, the centres' professionals have attended the following courses:

- 1 - HOSPITAL CLEANLINESS COURSE
- 2 - COURSE ON BANDAGING, TREATMENTS, PROBES AND COLOSTOMIES
- 3 - MODIFICATION OF CONDUCT IN MENTALLY HANDICAPPED PERSONS
- 4 - BASIC CARE IN GERIATRIC NURSING

The personnel employed at the new centres have undergone training so that they learn the practices to be implemented at all centres in a uniform manner.

SCHOLARSHIPS

Eptisa Salud Casta has agreements with teaching centres for training plans and scholarships:

- 2 annual scholarships within the postgraduate programme in occupational therapy at the Universidad Civil de Salamanca.
- 2 annual scholarships within the postgraduate programme in psychology at the Universidad Civil de Salamanca.
- 1 annual scholarship within the postgraduate programme in logopaedia, at the Universidad Pontificia de Salamanca.

In order to be a reference in the mental health sector, training, innovation and technology are essential.

PUBLICATIONS

The Eptisa Salud Casta professionals collaborate and produce publications to increase knowledge management.

- > Biomedicine and Health Legislation, Volume VI
- > Clinical Toxicology and Drug Dependency: Methadone 2009

CONGRESSES AND SCIENTIFIC PAPERS

Seminars and workshops were organised during 2009 to share experiences, good practices and knowledge between qualified personnel. The following should be emphasised:

- > Fifth International and Inter-university Seminar of Biomedicine and Human Rights (25th and 26th of June 2009)
- > Third National Clinical Laboratory Congress (14th – 16th of October 2009)

1. Occupational therapy >>
2. Events >>
3. Casta Arévalo Centre >>
4. Casta Guadarrama Centre >>



Seminario
 Internacional e
 Interuniversitario
 de Bio
 Derecho

25/26

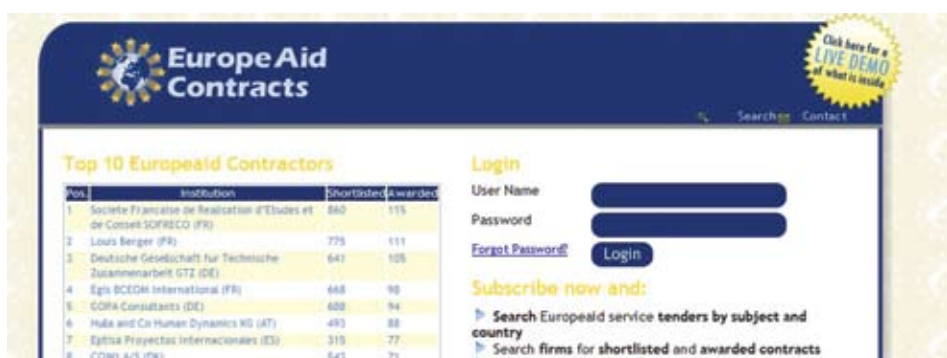
AULA DE ESTUDIOS AVANZADOS
 Seminario de Toxicología
 y Dependencias
 21 de mayo 2008

Lugar de celebración:
 Real Academia de Jurisprudencia y Legislación
 c/ Princesa de Guzmán, 14
 28014 Madrid



Eptisa worldwide

We have made significant advances in international strategic development because of intense activity in the creation of new projects, with 26% growth compared to 2008



Pos.	Institution	Shortlisted	Awarded
1	Societe Francaise de Realisation d'Etudes et de Conseil-SOFRECO (FR)	880	115
2	Louis Berger (FR)	775	111
3	Deutsche Gesellschaft für Technische Zusammenarbeit GTZ (DE)	647	105
4	Egis BCEDE International (FR)	668	90
5	GOMA Consultants (DE)	608	94
6	Hula and Co Human Dynamics KG (AT)	493	88
7	Eptisa Proyectos Internacionales (ES)	315	77
8	CORU A/S (DK)	543	71

EPTISA occupies seventh place, among 19,000 bidding consortiums in the ranking of European companies that work with the European Commission and with leadership in the efficiency of its commercial investment

2009 was a year of significant advances in international strategic development because of intense activity in the creation of new projects, with **growth of 26% compared to 2008** and the consequent 9% increase in the client portfolio, which now represents 40% of the total group portfolio.

public deficits which have limited public investment in infrastructure.

In this context, there was international bidding contraction, especially in Europe and the United States, in spite of the G-20 decision to rely on investment as the way forward from the crisis.

This growth consolidates the international development plan 2006-2010 and establishes strong foundations for future development through 2014.

International activity remained in good condition during the 2006-2009 period with mean annual invoicing growth of 17%, and 26% in portfolio.

Such growth levels are the positive responses of our clients to the subsidiary strategies followed with respect to local implementation and adaptation, prioritising project quality assurance and diversifying markets and sectors.

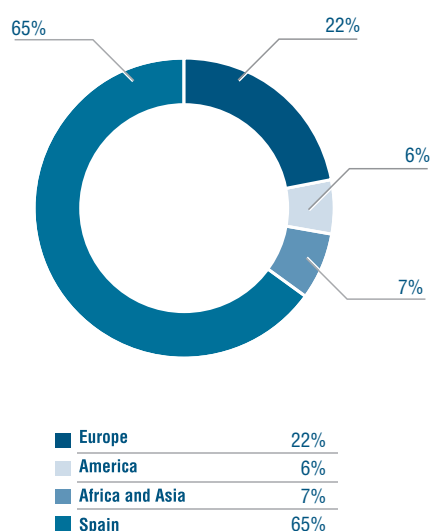
2009 was witness to how the financial crisis of the previous year developed into an international crisis, with negative GNP figures in most countries and increased

In this environment and thanks to the involved human team, Eptisa was able to be even more competitive, increasing its proximity to the client in tender and project management and taking advantage of its track record of successfully completed projects.

The position of Eptisa in seventh place amongst 19,000 bidding consortiums in the ranking of European companies that work with the European Commission and with leadership in efficiency must be stressed.

Within the international scope of infrastructure projects, 2009 was characterised by the culmination of projects and continuity in mature markets in which Eptisa has been working for several years, such as the case of Ireland, together with the stability of the company in new markets such as the United States and Portugal.

INTERNATIONAL ACTIVITY



EUROPE



After the fifteen years presence in this region, Eptisa operations continue to grow due to our creation of value for the client. We develop works with a high standard of quality assurance, with strengthening of management capability and local communication with the client.

2009 continued the same positive trend, consolidating growth in our traditional markets as well opening new ones. Eptisa is now consolidated as one of the world's leading companies in providing engineering and consulting services in Europe.

IRELAND

We continued working in this country in 2009 for Dragados, with special mention of the **official opening of the N25 Waterford Bypass Motorway** in October, which was attended by the Spanish Ambassador in Ireland and the Irish Minister of Tourism, amongst others. We also continued production for SACYR-FCC, with the constructive design and control of project documentation for the extension of the M50 motorway, which forms the half-bypass ring for western Dublin.

Other projects in which Eptisa has participated in Ireland and with official opening expected in 2010 is the M3 Clonee to North Kells motorway.

Regarding Irish railways, Eptisa carried out the feasibility study and preliminary design for a section of bypass line for the Dublin light railway (Metro West) between the Cappagh and Meakstown districts.

PORTUGAL

In **water**, we are carrying out the *detailed design for major hydroelectric works at Gouvaes and Padroselos*, which are located in the upper basin of the river Tamega and are included in the National Reservoir Programme with High Hydroelectric Potential, developed by the Portuguese government.

Similarly, in **roads infrastructure**, we are currently developing the detailed design for the *Algarve coastal highway project* concession for Dragados.

In **port** infrastructure, Eptisa is working in the Port of Tavira for the recovery of the original 1997 project, based on the new geological and space allocation information.

GREECE

Our company continued developing activities within the project for *E.S.P.E.L. "Expert consultant in quality assurance"* funded by the European Union, based on the contract signed in 2008 with the Greek Ministry of Economy. Eptisa has a workforce of more than 60 employees, with its central offices in Athens, and regional offices in Ioannina, Larisa and Xanhti and with one of the best civil works laboratories in the Balkans area, also located in Larisa.

Our activity comprises audits of contractors, technical assistance and quality control systems, comparison trials and institutional assistance to the client and the Ministry of Public Works in the process of improving works supervision and quality procedures.

ROMANIA

Active in Romania since 1996, Eptisa officially established its subsidiary in Romania in 2004 and is presently considered as one of the top professional engineering and consultancy company on the Romanian market.

Eptisa started its activities in Romania by implementing projects focused on



1. Phare 2005. Iasi Exposition Center

2. Wastewater treatment projects in Romania

institutional strengthening for the central and regional administration and has gradually evolved, consolidating its local presence by carrying out complex projects focussing on the implementation of EU environmental acquis, engineering for environment and transport infrastructure and progressing to successfully implemented multi-country environmental projects.

From 2000, the company began the development of **water and wastewater infrastructure** projects with design services and preparation of application for EU financing. Our capacity and services in the area have been extended also to supervision and management of major projects for refurbishing and extension of a large number of water and wastewater treatment plants and water supply and sewerage networks in 20 municipalities and 17 counties of Romania.

The company evolution registered a new stage by widening even more its profile when entered in 2003 the **transport infrastructure** market and implementing road safety measures projects, design and supervision projects. In addition, in

the last four years, Eptisa advanced into the civil constructions market by working with public and private beneficiaries and becoming an essential partner for building and construction investors.

In the same rhythm with its economic growth, Eptisa human resources developed constantly, starting 14 years ago with a small team and 1 office located in Bucharest, growing into a multidisciplinary and diversified organization counting on the skills of over 100 employees in 1 head office in Bucharest, 2 regional offices in Cluj and Craiova and 25 local offices covering over 50% out of Romania's counties .

Since the beginning of its activities in Romania, Eptisa completed the implementation of 43 projects, while the investments/works managed valued approximately 1.85 billion Euro. At present, the core domain of the company is the water supply and wastewater infrastructure, providing high value engineering services and project management support to 14 regional water operators and managing 12 works contracts co-financed by the EU and IFIs.

Our fifteen years of presence in Europe with successful projects have consolidated us as one of the leading world companies in the provision of engineering and consulting services in the region

During 2009, Eptisa continued the implementation of 16 projects and was awarded 6 new contracts, out of which one was a turn-key project (refurbishing of wastewater treatment plant) and another in the **waste management** field, two new fields of activities for Eptisa in Romania.

An excellent outcome of 2009 was the award of the contract "Technical Assistance for the Supervision of the Contracts for Waste Integrated Management System in Bistrita-Nasaud". This project is strengthening our position into the Romanian environmental engineering market with a new field of activity and it makes Eptisa Romania the consultancy company awarded with the first contracts tendered under Priority Axis 1 *Extension and modernization of the water and wastewater systems* and Priority Axis 2 *Development of the wastes integrated management systems and rehabilitation of the contaminated sites of the Sectorial*



Operational Programme Environment. Related to SOP Environment, it is of utmost relevance that Eptisa won 4 out of the first 10 contracts financed within the from Priority Axis 1 and 1 out of 2 contracts tendered under Priority Axis 2 by end of 2009, thus consolidating its position as leading company on the engineering and consultancy market.

Among the most important of last year's results was the Continuation project of the Supervision Works in Craiova (Phase II), which was granted to Eptisa Romania as an answer to its excellent implementation of the Phase I "Technical Assistance and Supervision of ISPA contracts" Project of 3.4 M. EURO budget. Eptisa has also been awarded with the Continuation of the SAMTID project – supervision of water supply and sewerage networks in 6 counties. Also, "Technical Assistance for Implementation of the Road Safety Measures", a difficult project has been a successfully completed, making us a strong partner for the future related assignments, within an extremely competitive domain.

Yet, the most complex and impacting project of Eptisa in 2009 was

"Management and site supervision for works financed under PHARE 2005" with a 3 M. Euro budget, including 10 works contracts for tourism, transport and business infrastructure and which will be finalized in 2010. Its complexity derives from the exceptionally various and wide projects objectives like refurbishing and development of leisure facilities (salt lakes, salt mine) and rehabilitation of historical/cultural monuments (Princely Court) and their related infrastructure, improvement and refurbishing of regional transport networks, including county roads and bridges, as well as development of the business infrastructure (exhibition centres), in order to improve access to markets, information, services and technologies, with a view to improving business competitiveness.

In 2010, Eptisa Romania will commence the implementation of 3 of the new contracts awarded in 2009 in the waste management and water infrastructure fields with a value of over 5 M. Euro, with a cumulated value of investments/works of 712 M. EURO. We will also start implementation of the first Turnkey Project in the water sector as General Contractor for the "Extension and Refurbishing of

the Wastewater Treatment Plant within Zimnicea Agglomeration" with a 4 M. Euro budget.

Our last year's activity and results strengthened our outstanding position on the local market, Eptisa becoming a synonym for quality and professionalism, leaving its mark on each developed project, always seeking to attain one final objective: to offer excellent services and to completely and efficiently comply with the Client's requirements.

BULGARIA

In 2009, the work for the ministries and municipalities continued in the identification of projects in the water and environmental sectors that could be funded by structural EU funds. May included the satisfactory conclusion of one of the most significant projects carried out in Bulgaria "Strengthening of administrative capacity for applying environmental legislation on a local level" which helped more than eighty

1. Phare 2005. Restoration of a Salt Mine >>
2. Construction of water supply networks in Romania >>
3. Construction of a water treatment plant in Romania >>



municipalities to improve and develop their administrative capabilities.

In **water**, we were awarded the project “*Works supervision for the integrated water cycle for the city of Sliven*”, the implementation of which began in June. Eptisa carried out the works supervision for the 26 kilometres of the sewerage network and the 44 kilometres for the water supply, with the project being implemented in accordance with FIDIC standards.

Also, Eptisa provided support for the local Sliven administration in the improvement of the urban environment, energy savings, maintenance costs and network refurbishing, together with the reduction of the risks of flooding and waste water leaks onto streets.

SERBIA

Since 2002, the activities of Eptisa in the Western Balkans experienced a significant growth that led to the establishment of a permanent structure in the area in 2005. The company set up a Regional Office for South East Europe in Belgrade with the objective to coordinate its entire commercial and management activities in the seven countries in this territory

»
1. Works and improvement. European Programme MISP

that aspires to become an integral part of the European Union.

Composed by a multidisciplinary team of local and international staff with more than 100 members, the Office is organised in three Competence Units (Infrastructure, Environmental Management, Health and Energy, and Socio Economic Development and Public Administration Reform), and is specialised in the provision of technical assistance services to public institutions and to the private sector in Albania, Bosnia and Herzegovina, Croatia, Kosovo (under UN Resolution 1244), the fYR of Macedonia¹, Montenegro, and Serbia.

Nowadays Eptisa is implementing nineteen projects distributed over the region. This regional coverage has positioned Eptisa as the leading international consulting and engineering group in the area.

In Serbia, during 2009 the “*Design and Implementation of the Water Management Information Systems*” for the Ministry of Agriculture and Waters was successfully

»
2. Rebuilding of a Secondary road. Municipal Infrastructure Support Programme in Serbia (MISP)

completed. This project that was funded by the European Union, aimed to the development of a GIS solution based on ESRI technology to facilitate the management of the entire water resources in the country and to fulfil the international reporting obligations in the field of water management.

Also, during the last year, a team from Eptisa finalised the EU-funded project “*Renewable Energy Feasibility Studies*” that had the final objective to facilitate private investments in the production of renewable energy. Amongst other activities, the expert team coordinated the preparation of various feasibility studies for the possible construction of hydropower plants, and provided expert advice to the Ministry of Energy for the introduction of regulatory changes to facilitate the private participation in the generation of electricity.

2009 was, without any doubt, our year of consolidation and success in this European area



3. Water supply network in Smederevo. Municipal Infrastructure Support Programme in Serbia (MISP)

At the same time, Eptisa's Regional Office for South East Europe initiated the preparatory tasks for the "*Works Supervision for the Belgrade Bypass*". This section of the road, the construction of which will begin during 2010, will link up the Belgrade-Budapest, Belgrade-Zagreb and Belgrade-Nis highways, thus avoiding traffic having to enter the city centre. With a budget of €173 million, it consists of ten kilometres of dual carriageway, forming part of the Pan-European Transport Corridor X.

In addition, we continued providing technical support within the "*Municipal Infrastructure Support Programme*", funded by the EU and managed by the Delegation of the EU to the Republic of Serbia. The original contract had a budget of €3 million and was designed to achieve two main objectives: on the one hand, to provide technical support to all the Serbian municipalities in the planning and implementation of municipal infrastructure projects, mainly related to water supply, wastewater treatment, and the collection and disposal of municipal solid waste, and, on the other hand, to provide legal,

managerial and technical support for an eventual transformation of the Public Utility Companies in charge for the delivery of municipal infrastructure services. As a result of our satisfactory execution, the contract was extended and its budget was increased in order to give support to the Building Directorate of Serbia for the management of a refugee housing loan from the Council of Europe Development Bank (CEB) and to strengthen the institutional capacity in Serbian institutions to implement the Housing Loan Projects.

Recognition for a job well done by the expert team was the award at the end of 2009 of the second phase of the Programme. The new contract is funded by the EU's Instrument for Pre-Accession with €9.5 million. This new contract will last 36 months during which a team of experts from Eptisa will carry out various feasibility and environmental impact studies for the construction of sanitary landfills, wastewater treatment plants, and drinking water plants and supply networks. In addition, the works supervision of another five projects (three landfills, a water supply network

and a wastewater treatment plant) will also be carried out by the team. Finally, the expert team will continue providing advice and support for the improvement of the operational capacities of the public utility companies in charge of municipal infrastructure services, for their eventual transformation with the possible participation of the private sector.

During the last year, Eptisa was also awarded a tender funded by the EU-IPA programme to provide support to the Ministry of Environment and Spatial Planning in preparing their National Strategy for Environmental Approximation. The expert team is giving legal advice for carrying out the legislative changes required to achieve the *acquis communautaire* in the field of environment. This legal approximation is a key pre-requisite for ensuring the future accession of the Republic of Serbia into the European Union.

Finally, Eptisa also inked a contract to provide "*Support to the National Investment Plan*". The objective of the project is to offer technical support to



the Ministry of the National Investment Plan, the public body responsible for coordinating the efforts of all the Serbian authorities in the development of all types of infrastructure. Our experts are participating in the preparation, selection and prioritisation of infrastructure projects that will be implemented over the coming years.

ALBANIA

During the past year, Eptisa continued working on the preparation of a set of road design and construction standards for Albania. Additionally, the company started a new project funded by the World Bank, intended to provide support to the Ministry of Health in the preparation of a master plan for the optimisation of the health-related infrastructure throughout the country.

KOSOVO

In Kosovo Eptisa successfully finalised the implementation of an assignment that aimed to enhance the institutional capacities of municipalities for the implementation of environmental laws

and regulations.

In addition, we continue providing services in three other projects. The first one seeks to offer support to all the local governments in Kosovo to advance in their reform in the context of the ongoing decentralisation process. The second one is intended to improve the capacities of the Ministry of Energy and Mining, advising on the preparation of an energy strategy and in the implementation of policies for a market based energy system in compliance with the Acquis Communautaire and with the requirements of the Energy Community Treaty (EnCT). Finally, our experts are giving support to the Chamber of Commerce and to the Association of Municipalities in carrying out various administrative reforms that foster local economic development and the improvement of the overall investment climate.

Also during the last year, Eptisa was awarded a new project that aims to improve the social and economic infrastructure in several municipalities in Kosovo. Funded by the EU-IPA programme, the project will improve municipal infrastructure with

a particular emphasis on ensuring that minorities and the disadvantaged are able to access the municipal services more easily in the future. A team of experts of Eptisa will be involved in all stages of the project implementation, including assisting the municipalities to prepare their projects, developing the detailed design and technical specifications for the selected infrastructure, and providing support in the implementation by supervising the construction works until the handover and final acceptance by the beneficiaries.

Finally, Eptisa signed another contract with the European Commission Liaison Office in Kosovo aiming to strengthen the institutional and technical capacities of the Ministry of Health and other health sector institutions by improving the inter-institutional and donor coordination.

BOSNIA HERZEGOVINA

During 2009, two contracts were inked by Eptisa and the Spanish Agency for International Co-operation and Development. Both interventions were aimed at building capacities in different



River Basin Management Authorities for the preparation of their River Basin Management Plans in accordance with the EU WFD. In both cases, a team of experts from Eptisa gave technical support for the development of hydrological and hydraulic models and for the implementation of flood management Decision Support Systems.

CROATIA

In Croatia, Eptisa continued providing support in two important projects funded by the European Union. On the one hand, technical support was given to the Croatian administration for the preparation of infrastructure projects that will be funded by the Pre-Accession funds, for the participation of the country in the EU Cohesion Policy, and for ensuring the timely and efficient management of projects to be funded through the future Structural and Cohesion Funds.

On the other hand, Eptisa provided technical support to the Ministry of Environment to improve the environmental conditions in the country through the establishment of a sound

hazardous waste management system. The project also focused on providing assistance for the establishment of hotspots remediation procedures and for the development of a Waste Management Information System.

Last but not least, the regional project “Support to IMPEL ECENA Networks” was successfully completed. The intervention focussed on providing technical support to the various authorities in Croatia, Romania, Bulgaria and Turkey on the effective implementation and enforcement of the numerous EU Directives in the field of environment.

CAUCASUS

Eptisa currently has four offices in the area that ensure our presence and proximity to the client, which is important for future opportunities.

During 2009, our activities in regional project for improving water quality management in the river Kura basin have followed their course. From the project office in Tbilisi, **Georgia**, this important project is becoming a success in the

quality of the results as well as the active participation of the three administrations involved, Georgia, Azerbaijan and Armenia. Cooperation and common interest have defeated the complex political climate existing between these countries and, as a result, the European Commission has awarded an addendum. As a complement to the exchange of knowledge, study tours will also take place this year to Denmark and Spain for personnel from the ministries involved. Great efforts were made in the area during the year, such as the organisation of a seminar last September about our experience in water management in transition countries, which was given by personnel from the Asiatic Bank at the Manila headquarters. This resulted

1. Eptisa office in Belgrade
2. Works supervision for the Belgrade By-pass
3. Çanakkale landfill inauguration
4. Design and works supervision of 40 schools in Istanbul



in the first contract from the Asiatic Development Bank in **Uzbekistan**, where we assisted the administration in the management of water projects over four years.

We were also awarded an important regional project by the European Commission for the improvement in solid waste management in seven countries in the area. This resulted in four years of strengthening the administrations of **Armenia, Azerbaijan, Byelorussia, Georgia, Moldavia, Russia** and the **Ukraine** in solid waste management, including the identification of pilot projects. The project has a central office in Kiev and a regional one in Baku.

fYR of MACEDONIA

In the fYR of Macedonia, Eptisa was awarded a project funded by the IPA Programme from the European Union and entitled "Technical Assistance for the Preparation of the Investment Project for Wastewater Collection and Treatment in Prilep". The main objective of this contract was to achieve a wastewater quality level that complies with the EU Directives related to wastewater collection and treatment. In order to achieve this, a group of engineers from Eptisa are preparing the design and the tender documents for the rehabilitation and extension of the sewerage network and for the construction of the new

Wastewater Treatment Plant for the city of Prilep, with a capacity of 95,000 P.E.

MONTENEGRO

In Montenegro Eptisa completed a project that aimed to strengthen the institutional capacity of the environmental authorities, ensuring grounds for an environmentally sustainable economic development of the country. A consortium led by Eptisa assisted the Ministry of Tourism and Environmental Protection in the development of the first National Environmental Action Plan (NEAP), in the establishment of the national Environmental Protection Agency, and in the preparation and implementation of environmental infrastructure projects funded by the European Investment Bank.

TURKEY

Our permanent presence in Ankara since 2006 has produced significant business opportunities for the company. Its geographic location is also strategic in that it enables us to support the development of business and management of potential projects in Central Asian and Caucasian countries, which have important cultural and commercial ties with Turkey

During 2009, the project for the management of solid waste and works

1. Works supervision of Çanakkale Landfill in Turkey

supervision of the construction of a new landfill and the sealing of the old ones for the city of Çanakkale was developed. This is the first project in Turkey in the solid waste sector in accordance with EU directives.

The recognition of the good job done by the company and the optimum results obtained were quite plainly significant during the official opening ceremony, which was attended by the highest authorities of the EU delegation, from the Ministry of the Environment and regional political figures.

Another 2009 project entailing a significant advance consisted in the provision of Technical assistance to mitigate the risk of flooding in the GAP region (southeast of Anatolia), awarded by the Commission. The project has two components: the first is the training of the beneficiaries (those responsible for the regional administrations of the nine GAP provinces) in the adequate implementation of the two grants schemes: territorial planning & investment and social support. The second component consists in institutional strengthening of the beneficiary (GAP administration) for the sustainable management of flood risks. This project forms part of the Great Gap project, the origin of which lies in the construction of the Atatürk Dam over the River Euphrates, which is one of the largest in the world, for hydroelectricity production and irrigation.

The third project that we are developing is the design and works supervision of forty schools in Istanbul for the Istanbul regional government which, through agreements with BM and BEI, will provide significant funds for projects to reconstruct or reinforce the structures of public and administrative buildings, so that they can withstand earthquakes. In this way, the fact that we can provide our services to this client right from these initial stages puts us in a favourable position with respect to future projects.

AMÉRICA



The external monitoring service is the instrument by which, in a recurrent manner, Eptisa manages the technical follow-up of most of the projects and programmes funded by the European Union in various areas around the world. We have been carrying out these services in Latin-America since 2001 and in the Caribbean-Pacific since 2007. In 2009, more than 350 projects were monitored in all fields of activity. The company's accumulated experience in specialised analysis services for cooperation and the evaluation of projects, programmes or policies should be stressed.



UNITED STATES

Eptisa has consolidated its position in the US, working for Dragados and signing strategic alliances with local companies in order to collaborate in local projects. The focus has been put on PPP (Private Public Partnership) projects for which Puerto Rico is going to bid from 2010 to the value of several billion dollars, being selected by the authorities for the Private Public Partnership in this country from within its list of consultants.

Work continued in 2009 on the constructive project for improving the I-595 motorway in southern Florida, for Dragados. It is a highly congested highway north of Miami and the project consists in constructing various toll lanes for alternative use depending on traffic congestion. Its 1.3 billion dollar budget is the highest investment figure in the state of Florida for the last fifty years.

2. Improvements in the I-595 Highway in Miami

CENTRAL AMERICA



Eptisa has been intensely active in this region for the last twenty years. From small project identification jobs to the management of significant funds, such as the European Union PRRAC programme, due to the catastrophe caused by hurricane MITCH, in which 20% of the applied funds were managed. Activities currently

contract for financial management support in **Guatemala**, in the education, health and safety sectors. The juvenile delinquency prevention project in **El Salvador** was successfully completed, in which support was given to the competent authorities through an extensive programme with institutional and social impact.

The execution of the cadastre and regulation of 190,000 hectares of rural land in several provinces of the Azure Peninsular also were continued, which will benefit more than 50,000 persons. This same work is also being completed in Chiriquí Province, where the cadastre over an area of 105,000 hectares will regulate the legal basis of 10,000 agricultural producers.

In America, we monitored 350 projects in all fields of activity during 2009, which were the result of our experience accumulated in specialised development cooperation analysis and the assessment of projects, programmes or policies

We continued with the work funded by the BID in **Costa Rica**, on the generation of cartography and orthophoto for the entire country. It underwent very significant development in 2009, with a second addendum to the contract being signed. The design and implementation of a Geographic Information System (GIS) is also planned for 2010 in order to improve handling of the information and which will be accompanied by specific training. Similarly, the technical assistance for the GAM programme has been completed (Large Metropolitan Area of San José), relating to urban planning and funded by the European Union.

The cadastre work for 140,000 properties is also continuing for twelve small towns in the Panama Metropolitan Region in order to computerise the urban cadastre and update and computerise the Public Property register. For 25,000 of these properties, the necessary documentation is being generated so that the legal situation can be regularised, which affects more than 110,000 people.

range from more traditional infrastructure investment projects to projects directed towards institutional enhancement.

During 2009, we developed significant experience in the public policies area through budgetary support for the **Nicaraguan** government, in the strengthening of management of public finances. We have also been awarded a new

In **Panama**, the work funded by the BID for obtaining orthophotos, cadastre and ownership over an area of 280,000 hectares in Darién Province was concluded in 2009. This work involved obtaining the ownership certificates for more than 5,000 rural properties and which affect a population of over 40,000 inhabitants.

Additionally, the project for institutional strengthening and modernisation of the legal body of the Republic of Panama, funded by Europe Aid, was successfully concluded.

ANDEAN REGION



Eptisa has been working in this region since the 80s, initially on purely technical projects, with this experience being later combined with cooperation development, including technical assistance for local governments in various areas, such as infrastructure, water and environment, transport, reconstruction and disaster prevention. Projects have been carried out, together with technical support for important programmes, such as the physical and social reconstruction and reconversion of the state of Vargas (Prederes) in **Venezuela**, which had one of the largest funding budgets the European Union has ever made available to this region.

Cooperation Projects in Resource Development and Management

In 2009, we worked on the monitoring of cooperation projects in the area. Finally, the experience gained from water resource management projects must be pointed out, with significant operations.

In **Ecuador**, the reception of the works for the water distribution network and storage tanks on Santa Cruz and San Cristóbal islands was carried out. The turnkey project included the design and construction of the water supply to the Galapagos Islands in collaboration with the company Entemanser - Aqualia from the FCC group.

CARIBBEAN



1. National Geological Service, Dominican Republic

The company carried out very intensive activity in the **Dominican Republic** during 2009, with various development projects and technical operations. This culminated in the technical assistance project for Ministry of Mining for institutional strengthening, with the creation of a National Geological Service (SGN), in collaboration with the Spanish IGME and Prointec. The main mission of this SGN will be to manage all the country's geological information and assist in meeting objectives relating to mining, infrastructure construction, hydraulic resources, seismic risks and disaster prevention etc.

The Geological Science Faculty was also created as a contract extension. In the area of national public policy support, the technical support services for reinforcing the education sector capabilities (with emphasis on pre-budgetary support – SWAP) were concluded after three years of implementation. We also continue working on economic integration through the reinforcement of national capabilities.

Eptisa carried out several missions in **Haití** in 2009 for the technical study of cooperation projects as well as the identification of a significant project for determining health factors, mainly focussed on improving services and water quality.

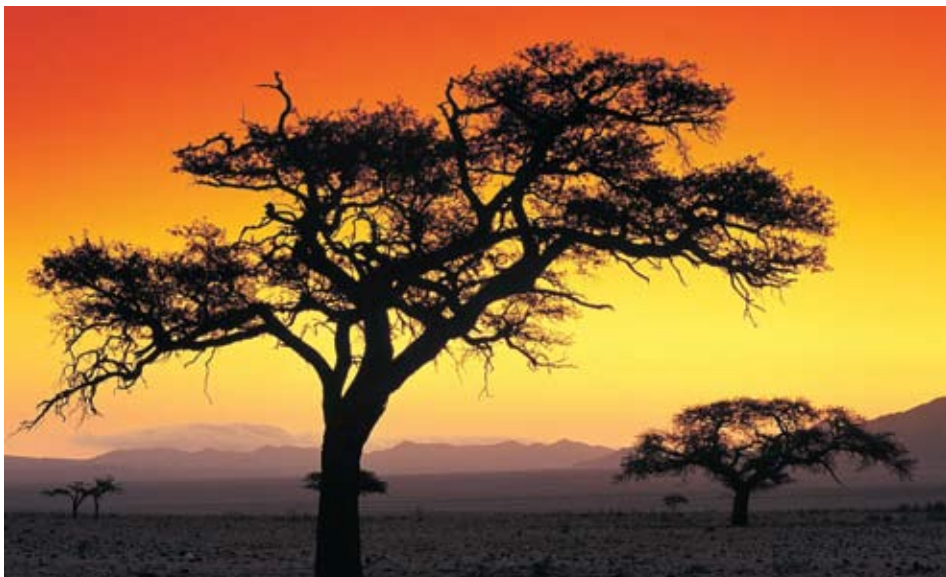
BRAZIL



Work continued in 2009 on a project for Acciona Inmobiliaria, with two blocks of flats, each with 25 floors and a total of 20,000 square metres in Guarujá, São Paulo state, executing the architecture, foundations, structures, landscaping and facilities designs, together with works management.

We also worked on the project feasibility study for the Fortaleza – Mucuripe railway in the state of Ceará (Brazil). This study involved the analysis of the feasibility of converting the Fortaleza-Mucuripe railway line, which currently is exclusively used for goods traffic with both origin and destination in the port, into a line that is integrated into the city's subway system (sharing passenger traffic with the night-time goods trains). At the moment, the line passes through Fortaleza by means of a single metric-width track along a route that runs along the urban section and is illegally occupying the railway domain zone along much of the distance, which does not allow total doubling of the branch. The total section length is some 13 kilometres. The feasibility study includes a first phase with the social-economic classification surveys in the study area, the mobility analysis, the transport system and land use and occupation studies. The second phase comprises the demand study, including carrying out the survey of preferences amongst the various transport modes present in the area, the definition of alternative technologies, the operational programme and the analysis of the social and financial profitability. Lastly, the third phase involves the preliminary topographic and cadastral surveys, the preliminary geological and geotechnical surveys, the preliminary route studies, the preliminary environmental studies and lastly, the basic design for the Fortaleza-Mucuripe railway line.

AFRICA, ASIA & MIDDLE EAST



MEDITERRANEAN AFRICA

Eptisa's experience in this area includes countries such as Algeria, Egypt, Morocco and Tunisia. One of the countries where most experience was gained is Morocco. This continued in 2009 through the specialised follow-up services for European Union projects, such as support for the country's literacy programme.

In 2009, Eptisa supplied a compacted concrete distribution system for the construction of the TAMALOUT dam in Morocco. The client is one of the largest civil works construction companies in Morocco, Entreprise Marocaine de Travaux (EMT). The system was designed so that the conveyor belt of over 70 metres in length could be folded and also distribute material from the mixer to the lorries in a continuous fashion, without any need to dismantle and re-assemble the equipment during the works execution period. To this end, it was taken into account that it would have to achieve a height of over sixty metres and level differences of up to 20° inclination.

The following main elements make up the system: the conveyor belt with its component parts, drums, drive motor, electronic variator and self-cleaning element. The main gantry-

type latticework more than sixty metres high, through the centre of which the folding belt is guided and to which it is fixed by a hydraulic anchoring system when in the working position. A lifting system with a 32-ton load hoist. Miscellaneous hardware parts, protections and ladders for maintenance tasks. Control boards, with motor protection and fitted with emergency operation buttons. The assembly of all these components comes to an approximate total of 140 tons. All the components were manufactured in Madrid workshops and taken to the worksite in 18 special lorries.

SUB-SAHARAN AFRICA

Eptisa's experience in Sub-Saharan Africa covers several countries, to which must be added that accumulated in Namibia and Mozambique and **Angola** where, in 2009 evaluation was carried out on the cooperation policy of the Spanish Agency for International Cooperation and Development (AECID) in this country. The project funded by the European Commission providing institutional support in food safety was also successfully concluded, in which services were strengthened in Benguela and Huila provinces. The Ministry of Agriculture and Rural development (MINADER) was also strengthened in rural

development design, strategies, policies and plans. Work was also carried out on promoting development initiatives with integral focuses.

In South Africa, in a consortium headed by the company Eurecna, a technical assistance project was contracted for the monitoring and empowerment of public policies in the fight against poverty.

CHINA

During 2009, Eptisa and the Chinese aeronautics firm Hafei contracted a *project for the design, detailed engineering and construction management for Airbus, for a parts manufacturing plant for the Airbus A-320 programme, with a constructed surface area of 33,000 square metres.*

In addition, installation work continues for laboratory equipment and training at the University of Chuzhou. The second supply, installation and training project for laboratory equipment has similarly commenced at the University of Zhoukou.

Contacts and Locations

EPTISA

C/ Emilio Muñoz, 35-37

28037 Madrid

T +34 915 949 500

F +34 914 465 546

eptisa@eptisa.com

A CORUÑA - ALBACETE - ALICANTE - ASTURIAS - BARCELONA - BIZKAIA - BURGOS - CÁDIZ - CIUDAD REAL - CÓRDOBA - GIPUZKOA - GIRONA - GUADALAJARA - LEÓN - LLEIDA - MADRID - MÁLAGA - PONTEVEDRA - SEVILLA - TARRAGONA - TOLEDO - VALENCIA - VALLADOLID - ZARAGOZA

BELGIUM – BRAZIL – BULGARIA – ECUADOR – SPAIN – USA – GREECE – IRELAND – PANAMA – PORTUGAL – ROMANIA – SERBIA
– TURKEY – DOMINICAN REPUBLIC - GEORGIA

www.eptisa.com
