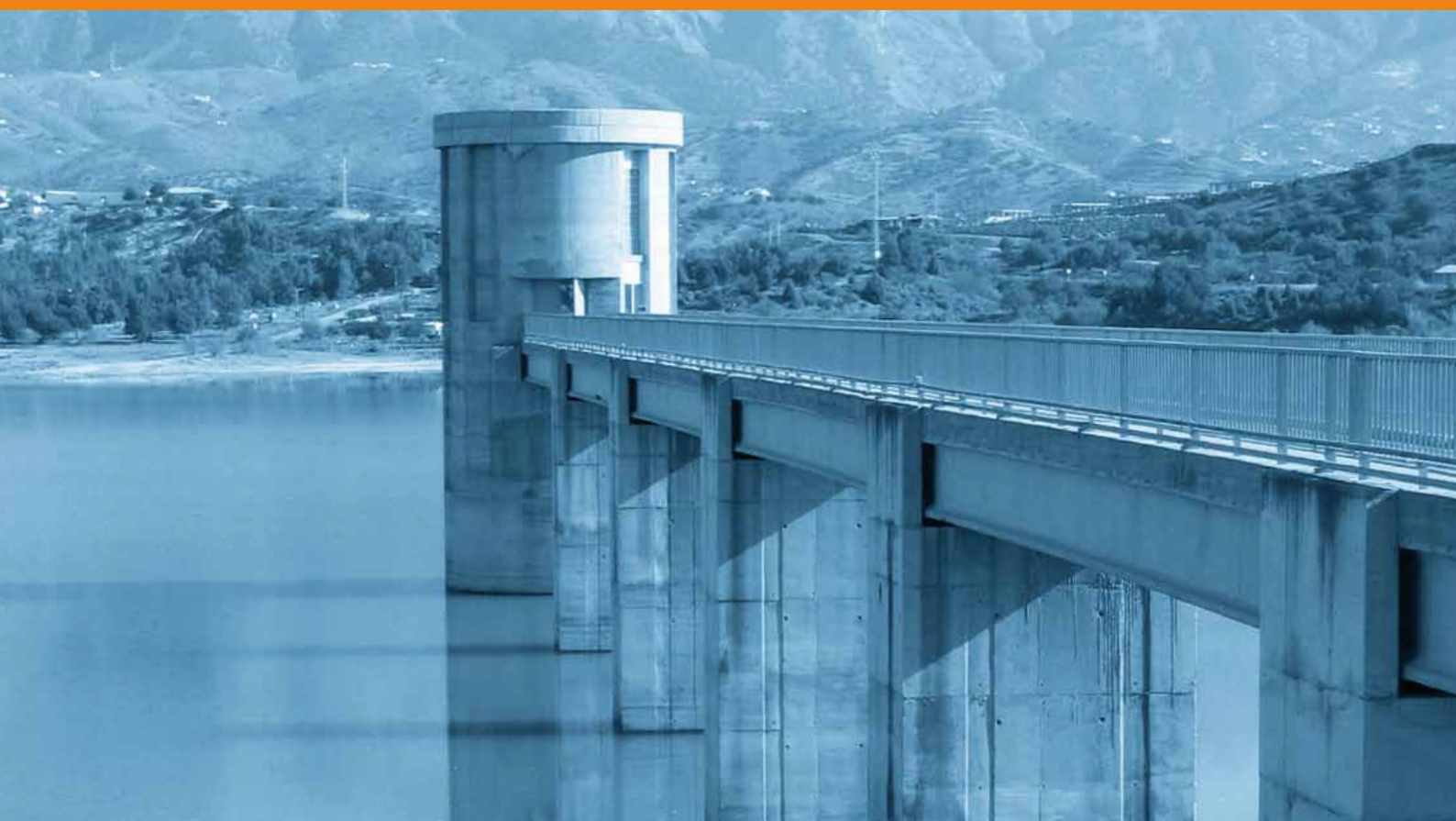




Annual Report
2010

ep*t*sa

we do it for you





Letter from CEO Luis Villarroya	4
Governing Bodies	7
Markets	
Transport	8
Water and the Environment	24
Building, Energy and Industry	36
Quality and Industrial Safety	44
Information Technologies	50
Health	56
Eptisa Worldwide	62



I Letter from CEO Luis Villarroya

International development and our capacity to adapt to our clients' needs in the Water, Transport and Information Technologies sectors have been key to this year's results

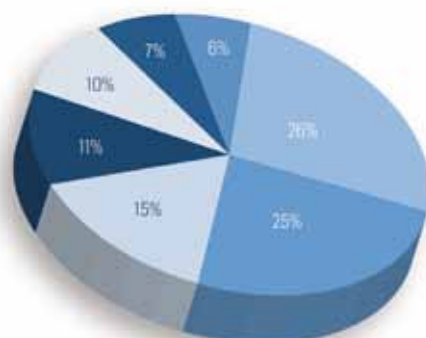
2010 was a difficult year as a result of the economic crisis. Spain's business sectors have been placed in a worrying situation by the evolution of 2010 macroeconomic figures, unemployment and pressure from international financial markets.

Public investment in Spain has fallen by 40% since 2008. The €29 billion invested in 2008 are expected to drop to under €18 billion by the end of 2011. The budget cuts for infrastructure projects have caused heavy disinvestment in tender offers for Engineering. This disinvestment in tender offers is estimated to be more than 50%.

In 2010 Eptisa ended the year with an income of €152 million in its key activity, Engineering, and €10.6 million in Healthcare. These results, whilst showing that we are not immune to the market climate, give us the confidence to face the future with realistic optimism.

The **engineering** sector must adapt to new financing models, and we think that participation by private capital will become increasingly more widespread using public-private partnership (PPP) models. This new relational map, which has been operational for some years abroad, requires engineering firms to think long and hard about the role we should play if we want to be major players in this new business model.

>> MARKET ACTIVITY



Transport	28%
Water and the Environment	25%
Quality and Industrial Safety	15%
Information Technology	11%
Building, Energy and Industry	10%
Development Cooperation	7%
Health	6%



>> **LUIS VILLARROYA**
Vice-President & CEO

We have understood this trend perfectly and are working to be the best partner for the consortium or constructor. Our vocation from the engineering standpoint is to defend technical quality and cost control, improving construction processes and supporting risk management.

Throughout 2010 we have worked with major concessionaries and constructors on national and international projects. For example, in Portugal we have carried out the construction design for two hydroelectric power plants, and, also in Portugal, taken on the layout and construction design for the Algarve Motorway. In addition to the above, there are several motorway projects underway in the United States as well as, in the building sector, the tender design for the construction of a hospital in the United Kingdom.

In **transport infrastructures**, we have consolidated our activity in the railway sector and in freight. All this while maintaining our position in the road sector. In fact, our position in this sector grew abroad in 2010, with the addition of two major projects in Serbia and Georgia to the projects already underway in the United States and Portugal.

We are the benchmark company in the water sector, where we have grown thanks to the diversification of our services. We have continued our traditional engineering work in the area of hydraulic infrastructure and consultancy in hydrological plans for the relevant public entities. In addition, in 2010 we have worked on the Planning and Management Systems for flooding risks in Spain and Eastern Europe.

In the Turnkey Project segment, both for the industrial and water sectors, we have grown by 5% over the last three years. In Eptisa we have applied our managerial capability to the development that has taken place in the field of services, extending our traditional involvement in design engineering to include integrated projects and construction management.

In **energy, building and industrial** we have worked on the development of renewable energies and taken part in tender bids both for incinerators in Spain, and in management and development plans for countries in Eastern Europe.

The **health** sector has had a growth year, although it has also been affected by budget cuts. The centres opened over the last year are going forward and our capacity is now close to 900 beds. The agreements signed with regional and national governments and this sector's possibilities for the future have encouraged us to continue our expansion plans in other parts of the country.

The **information technologies** sector represents 11% of our business activities. Despite heavy budget cuts, new business generation has remained stable, thanks to the technical excellence of our product offering and the trust of longstanding clients in our technical consultancy and development services. Throughout 2010 we have diversified our offer of services and have signed alliances with companies which have enabled us to increase our market share in this sector.

It must be stressed that the factor which has kept our activity within sustainable parameters has been our **international development**. Our international contracts have grown to represent 42% of the total, and the client portfolio has increased by 50%. Our International business now represents over 58% of the group's portfolio as a whole.

In just one year we have increased our presence from 32 to 38 countries. Our network of international offices has been extended to Haiti, Vietnam, India and Africa.

Thanks to the new contracted projects financed by the European Commission, the World Bank, the Asian Development Bank, and other multilateral financial institutions, Eptisa has become a leading actor in the IFIs market. In short, during 2010 Eptisa moved from 7th to 4th place in the ranking of European companies (from over 19,000 bidding consortia).

In the sphere of internal management, 2010 has been marked by a stringent savings plan and a clear-cut strategy for optimizing resources and processes. This has enabled us to face the situation without reducing our investment capacity.

We are convinced that our greatest asset is our people, so throughout the year we have continued placing emphasis on improving and strengthening the professional development of our human capital. In this regard, it is important to note that we have launched a talent management program which includes benefit packages and the opportunity for our staff to work abroad in order to enhance their career path.

Innovation is a sure way to create added value for our clients. For this reason, we continue to invest in R&D as a key factor driving all group activities. In information technologies, we have ongoing projects within the Spanish R+D Program "Plan Avanza". In the engineering area we are developing the application of new technologies in the service of infrastructure auscultation and monitoring. Likewise, in the healthcare field, we are taking part in a pilot project to incorporate touch-sensitive "pet" robots to be used as therapeutic tools.

Although convinced that there are still difficult years ahead of us, I have full confidence in our values and resources. And I am sure that our strategy will enable us to maintain our domestic activity, grow and develop internationally, and emerge stronger from the difficult situation our economy is going through.

Our international contracts have grown to 42% of the total, and the client portfolio has increased by 50%. Our international business takes over 58% of the group's portfolio as a whole

| Governing Bodies

Boards of Directors



Ángel Corcóstegui Guraya
President

Luis Villarroya Alonso
Vice-President & CEO

Ángel Catena Asúnsolo

Iñaki Echave Larrañaga

Felipe García Berrio

Enrique Leyva Pérez

João Luis Ármalho de Carvalho Talone

Advisory Committee



Juan Manuel Eguiagaray Ucelay

Martín Eyries Valmaseda

Luis de Guindos Jurado

Rafael Miranda Robredo

Pedro Pérez Fernández

Ignacio Santillana del Barrio

Management Committee



Javier Andreu

Ignasi Cantarell Taxonera

Ángel Catena Asúnsolo

Alberto Corbí López

Gonzalo García Alonso

Felipe García Berrio

Olga Ginés Ferrero

Gerardo Roiz de la Parra

Alfonso Rubio Barroso

José Manuel Sampedro Quijano

Javier Sanz Urbina

Luis Villarroya Alonso

I Transport

Eptisa consolidates its experience by participating in consortiums and private-public partnerships (PPPs) in domestic and international projects

Throughout 2010 we participated in transport infrastructure projects with the provision of engineering services for roads, railways, structures, ports and airports, paying maximum attention to technical quality, financial optimisation, construction and safety, operational functionality and the greatest degree of environmental respect in each intervention.

The infrastructures investment in Spain has fallen by 40% over the last three years, resulting in a shrinking horizon for the engineering sector and a marked reduction in the number of new projects being put out to tender. With respect to Spanish transport infrastructures, it seems that over the next few years we shall be focusing on the operation and maintenance of existing infrastructures.

The sector has to adapt to new forms of financing involving an increasing participation of private initiatives within models known as PPPs (Private-Public Partnerships). In this field in 2010 we took part in domestic and international projects providing technical and financial, and economic consultancy services to public administrations, financial institutions and concessionaries and construction companies.

In **railways** we consolidated our activity within the sector, where we continued providing our engineering services from projects and design studies, technical assistance, management works and testing and quality control to instrumentation and monitoring systems, to the principal railway administration bodies.

In **Spain**, we completed during 2010 consultancy and technical assistance services in the detailed designs for the *Enlargement of Seville Local Railway Services and double track to the station "La Cartuja"*. The project included the infrastructure, track, electricity power supply, safety and communications installations, as well as the construction design for eight stations.

In the Canary Islands we prepared the *Basic Project of the Platform of the South Tenerife Railway Line; Section: Montaña de Guaza Tunnel (Arona)*. In the summer of 2011 we shall begin work on the construction design.

2010 was a year of consolidation in the railway and airport sectors

In addition “Gran Canaria” Railways Authority commissioned us with the *Basic Project and Construction Design for the Platform of the Railway Line between Las Palmas de Gran Canaria and Maspalomas. Section 6: El Berriel- Playa del Inglés.*

In **Brazil** we delivered the *Feasibility Study of the Railway Connection Scheme between Fortaleza and Mucuripe*. And in the **United Kingdom**, we participated in the tender design of the *Line 2 Nottingham Tramway* concession project for FCC, where we were developing the geotechnical and structural design, as well as the integration of the project budget.

In **FYR of Macedonia**, a consortium led by Eptisa and including the participation of the German national railway operator “Deutsche Bahn”, we were contracted to carry out the *Feasibility Study and Environmental and Social Impact Assessment for the Eastern Section of the Pan-European Railway Corridor VIII* (Sections Kumanovo - Beljakovce - Kriva Palanka - Deve Bair).

Moving on to **High-speed Railway** projects, in 2010 we worked on the *Construction Design for the Madrid-Alcázar de San Juan-Jaén High-speed Railway Line. Section: Mora-Consuegra*, as well as on the *Platform Construction Project of the Spanish North-Northwest High-speed Corridor. Venta de Baños Hub. Valladolid-Palencia-Leon connection* (for the Comsa-Vías Joint Venture).

**>> PRELIMINARY AND
CONSTRUCTION DESIGNS FOR
THE PLATFORM OF THE RAILWAY
LINE BETWEEN LAS PALMAS
DE GRAN CANARIA AND
MASPALOMAS**

During 2010 we provided *Technical Assistance for the quality control and supervision works of the new High-speed Railway Line of Levante, Section: La Encina Junction - Játiva.*

ADIF, the Spanish Railways Infrastructures Authority, contracted us as part of a joint venture, to provide *Technical Assistance for the control and supervision of the platform construction works of the Antequera-Granada High-speed Railway Line. Section: Bobadilla Hub - Antequera.* This section constitutes an extremely important rail link as it will perform as the link between the lines connecting Antequera with Granada and Málaga with Córdoba, thereby interconnecting Granada with both Madrid and Málaga.

Regarding our geotechnical monitoring and auscultation services, we have worked *in the Sorbas Tunnel construction works on the Murcia-Almería High-speed Railway Line.* We continued with our work to control the behaviour of expansive soils at the Candí Bridge and of the transition area of the Pallaresos Viaduct, both on the Madrid-Barcelona-French Border High-speed Railway Line.





Within the field of **freight transport**, the Spanish General Agency of Railway Infrastructures (DGIF) commissioned us to prepare the *Preliminary Design of the New Southern Railway Access to the Port of Castellón*. We have also collaborated with Dragados in the tender design development for the construction of the access to the “Príncipe de España” Harbour Container Terminal with UIC Gauge Rail.

In relation with the **urban works**, we provided technical assistance services for the auscultation and monitoring of the works, both in metro and tramway tracks. The most noteworthy of which, was the completion of the auscultation works in the *Line 2 Extension to Las Rosas, in the Madrid metro* and the auscultation of the new *High-speed Railway Tunnel running beneath the Serrano Street in Madrid*. Also in Spain, we continued with the auscultation works on the new *Catalonian Regional Railways Access to Terrassa* and on *Line 9 of the Barcelona Metro*.

Finally Eptisa was also involved in the *Supervision Works of the Connection between Line 1 of the Seville Metro and Dos Hermanas town centre. Section: Montequinto-Dos Hermanas*.

<< **TECHNICAL ASSISTANCE FOR THE CONTROL AND SUPERVISION OF THE CONSTRUCTION WORKS OF THE HIGH-SPEED RAILWAY LINE OF LEVANTE. LA ENCINA-MOGENTE HUB**

CONSTRUCTION DESIGN FOR THE MADRID-ALCÁZAR DE SAN JUAN-JAÉN HIGH-SPEED RAILWAY LINE. SECTION: MORA-CONSUEGRA, SPAIN

>>



This project corresponds to the first of the four subsections into which the new rail link connecting the Madrid-Seville High-Speed Railway line with the current Iberian gauge line between Madrid-Alcázar de San Juan is divided. In the future this line will be converted to high-performance UIC gauge.

The line in question will therefore be converted into a double track High-Speed Railway link branching off the existing Madrid-Seville High-Speed Railway line. In order to avoid having to cut the track, thereby affecting the normal working of the main line, a "grade-separated junction" is being designed for the south-bound (right-hand) track which will be used by the trains travelling from Alcázar de San Juan to Jaen.

Among the subsection's most significant elements, special mention must be made of the structures, and perhaps the most noteworthy is the viaduct crossing the River Algodor and the pergolas to cross the Madrid-Seville main high-speed line and the CM-4025 road. Also, a 20-metre span viaduct has been designed to avoid interference with the Rota-Zaragoza and Almodóvar-Loeches oil pipelines.



**TECHNICAL ASSISTANCE
FOR THE CONTROL AND
SUPERVISION OF THE PLATFORM
CONSTRUCTION WORKS OF THE
ANTEQUERA-GRANADA HIGH-
SPEED RAILWAY LINE. SECTION:
BOBADILLA HUB IN ANTEQUERA,
SPAIN**

>>

The objective of this contract is to guarantee the provision of technical support services with respect to the control, follow-up and coordination of the health and safety measures required for the infrastructure works until the completion of the platform, which is currently under construction.

This section, of 6.2 kilometres long, is a key point of the overall project, because it will perform as the link between the lines connecting Antequera with Granada and Malaga with Cordoba, thereby interconnecting Granada with both Madrid and Malaga.

Among the most important elements of this section are the viaduct crossing the River Guadalhorce, with a length of 380 metres; two viaducts crossing the Iberian gauge line between Bobadilla-Granada, of 485 and 647 metres in length respectively; three overpasses, two underpasses, and the rerouting of a 1.2 kilometre stretch of the Iberian gauge Seville-Granada line. There are also planned two intermediate stations in Antequera (Malaga province) and Loja (Granada province), as well as a new high-speed station in Granada.

PLATFORM CONSTRUCTION DESIGN OF SPANISH NORTH-NORTHWEST HIGH-SPEED RAILWAY CORRIDOR. VENTA DE BAÑOS HUB. VALLADOLID-PALENCIA-LEON CONNECTION, SPAIN

>>

This Project comprises the platform construction of 15.97 kilometre of railway line. The section runs through the municipal districts of Dueñas, Venta de Baños and Villamuriel de Cerrato in the province of Palencia, and forms part of the triangle of railway lines which, centred on the junction at Venta de Baños, has a total length of 23.91 km. The remaining 7.9 kilometres will form part of the Project entitled "Platform Construction Project for the Spanish North-Northwest High-speed Corridor. Sections: Valladolid-Burgos and Venta de Baños-Palencia. Subsection: Venta de Baños Hub. Valladolid-Burgos and Leon-Palencia-Burgos Connection".

Venta de Baños is the railway hub for 3 clearly defined lines. The Valladolid-Burgos Line has a total length of 12,379.158 metres, the Venta de Baños-Palencia Line, which is 6,864.711 metres long, and the 4,673.843-metre long Palencia-Burgos Line.

The modified design has been created to meet the needs that have arisen as a result of the works already started. Among the most pressing of these is the need for more Iberian gauge tracks that will continue to be required to serve Venta de Baños station. The project also comprises the shortening of the viaducts crossing the railway line over the N-620a road and the existing Madrid-Hendaya railway, as well as the length of the cut-and-cover tunnel connecting the Palencia and Burgos Corridors within the junction. The modified project also includes variations in the construction procedures affecting a number of the works, thereby making possible to implement the project successfully whilst guaranteeing the safety of the worksites.



DETAILED DESIGN OF SEVILLE LOCAL RAILWAY SERVICES: DOUBLE TRACK FROM LA CARTUJA STATION AND ENLARGEMENT OF SEVILLE LOCAL RAILWAY SERVICES TO BENACAZÓN, SPAIN

>>

The project involves the works regarding two regional rail links, the existing C-2 Line and the new C-5 Line, the latter of which will use part of the former and part of the Seville-Huelva line to connect the centre of Seville with the Aljarafe Norte region before terminating in Benacazón.

The project for the C-2 Line to La Cartuja consists of converting the stretch of line between Santa Justa and La Cartuja into an electrified two-way signalled Iberian gauge section with traffic priority at all possible connection points. To achieve this objective it is necessary to lay a second track within a section measuring some 1,400 metres and to upgrade and

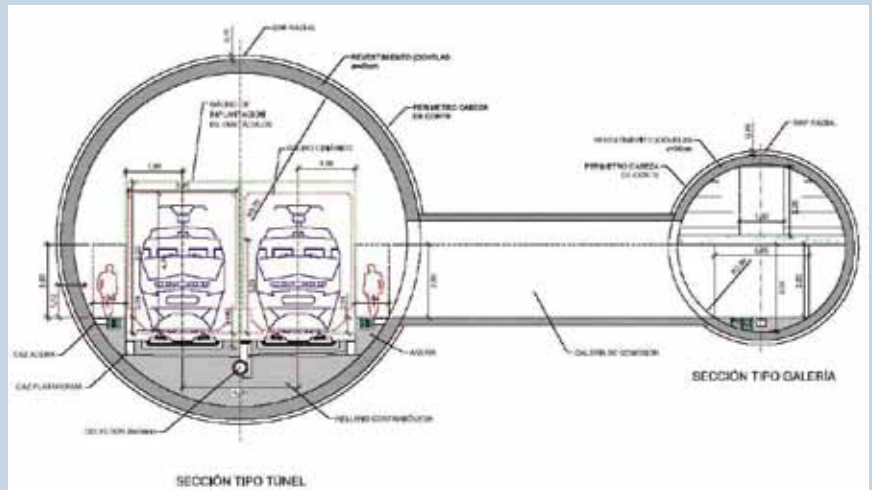
change the gauge of one track within a section that is around 5,000 metres long. As for stations, the line will have three, a new one in San Jerónimo plus the stations of Estadio Olímpico (the only one currently in service) and La Cartuja, both of which will be re-developed.

The new C-5 Line of Seville Local Railway Network, which connects this city with Benacazón, will provide regional rail services using the existing Seville-Huelva line. This new 32 kilometre line of Iberian gauge track will serve six regional stations of which 4 are completely new (Camas, Valencina-Santiponce, Salteras and Benacazón) and 2 are full refurbishments

of existing station buildings and infrastructures (Villanueva del Ariscal-Olivares and Sanlúcar la Mayor).

Eptisa has drawn up the detailed design for the Spanish Railway Infrastructures Authority (ADIF) in its entirety, including everything from the track superstructure to the electricity power supply, the safety and communications installations, trackside buildings, urban development and access routes from the different municipalities served by the line. Eptisa is also responsible for undertake the quality control of the works carried out.

The preliminary design prepared by Eptisa corresponds to Section 7: Montaña de Guaza – Los Cristianos. This stretch of line runs through a 3.3 kilometre long tunnel that emerges in the concrete panelled section of the underground station of Los Cristianos, which is 357 metres long. Running parallel to the rail tunnel is a services and emergency gallery connected to the main tunnel by passageways located at intervals of less than 400 metres. The two tunnels have been designed to be constructed using dual-mode tunnel boring machines. Electrical, emergency and fire protection installations have also been designed in the event of a train accident.



The project also includes the underground works for the Avenida de Chayofita, the road that provides access to the Municipality of Los Cristianos. This route has an extremely high daily average intensity of 48,344 vehicles/day. As the railway and road run parallel, the idea is to sink sheet piles the inner side of which are shored up using props in the case of the station. Both buried transit routes are covered using a lightweight slab in the case of the station and a reinforced slab in the case of the Avenida de Chayofita. With this involvement in the Avenida de Chayofita-Los Cristianos Transport Hub, the project carried up by Eptisa integrates the railway into the city.



>>

During the execution of the Pont de Candí Viaduct stabilisation works, Eptisa installed an extensive Auscultation System in order to monitor the foundations, infill, drainage structure, the pile blocking structures, as well as the previously and newly built structures.

A total of 400 instrumentation devices have been installed, with those of an electrical type (340 units) being automated and a control system managed by the "SAYTL" program, designed by Eptisa, being fitted. This enables the system

to be managed and obtained the results remotely and/or online in real time from the sensors, as well as the automatic transmission of alarms when values being exceeded.

In addition, an extensive levelling network that monitors more than 200 points on the ground and on structures has been installed. The System has been designed and installed with a view to long-term operation, namely as long as the working life of the viaduct itself.

PRELIMINARY DESIGN OF THE NEW SOUTHERN RAILWAY ACCESS TO THE PORT OF CASTELLÓN, SPAIN

>>

This Preliminary design concentrates on analysing freight transported by rail. It must be pointed out that the Port of Castellón represents approximately 5% of the general freight handled by all of Spain's mainland ports.

This Preliminary design will define the route and the number of tracks required to meet the demands of the port and specify the most suitable gauge to be used: Iberian (1,668mm) or international (1,435mm), and how these will connect to the general rail network, be it high-speed or conventional.

It will also be necessary to design a rail station with bays for transferring the freight between lorries, trains and ships. Road accesses to the Port of Castellón will also be studied, with all of this being done in coordination with the professionals of the Castellón Port Authority, Spanish Railway Infrastructure Authority (ADIF), Municipal Council of Castellón, Regional Government of Valencia and the Spanish Ministry of Public Works.



SUPERVISION WORKS FOR THE CONNECTION BETWEEN LINE 1 OF THE SEVILLE METRO AND DOS HERMANAS. SECTION: MONTEQUINTO-DOS HERMANAS, SPAIN

>>

The construction project for the link between the district of Montequinto and the satellite town of Dos Hermanas covers a distance of 5,055 metres between the first of the 6 stops in Olivar de Quintos and the last located in the Casilla de los Pinos area where the line in question meets the mainline between Cadiz and Seville. Car Parks facilities will be built at both stops.

The section includes the construction of several structures, the most noteworthy of which are two viaducts, the first of which will cross the future SE-40 trunk road (102 metres

in length) and the second, which will be a mixed structure viaduct (280 metres in length), will house the last station.

With respect to the track system, this will be of the ballast-less type using the RHEDA 2000 system. It is important to highlight that the entire track bed, except where it passes through stations, will have a grass finish which will provide a necessary additional aesthetic component given that much of this section of the line passes through a large urban development called Entrenúcleos where it is planned to build 20,000 homes.



**STATIC AND DYNAMIC TESTS
ON THE LINE 9 VIADUCT OF THE
BARCELONA METRO, SPAIN**
>>

Eptisa has successfully carried out the static and dynamic structural load testing of the viaduct of the Barcelona Metro's new Line 9. This one-off structure is composed of different types of structural elements, each of which had to undergo its corresponding static and dynamic load test.

This is a double viaduct with 100 spans for each of the tracks and it is divided up into caisson, viaducts, depot viaducts, scissor crossings and sidings. The tests involved the monitoring and measuring of vertical displacements (sagging) and stresses (vertical deformations) in steels and concrete, and vibrations (accelerations).



LINE 2 EXTENSION OF THE MADRID METRO TO LAS ROSAS, SPAIN
<<

Once more the Regional Government of Madrid has placed its trust in Eptisa for the auscultation and monitoring of its major infrastructure projects involving the improvement and expansion of its Public Transport Network.

The Line 2 extension of the Madrid Metro between La Elipa and Las Rosas is a major underground project implemented in an urban environment which took 20 months to execute and during which we were responsible for the auscultation, not only of the structure of the tunnel itself, but also of the delicate environment through which it was excavated. To do this a highly specialised Technical Assistance Team was deployed on-site and it used a tried and tested working methodology adjusted to the monitoring needs of this type of construction works.

Despite the reduction in the number of tenders for new projects, in **roadways** we continued to work for Spain's National and Regional Governments providing our full range of engineering services that cover everything from the planning phase, with the drafting of feasibility and informative studies, the design phase (layout and detailed), the construction phase, providing technical assistance, works supervision and finishing off with the operation phase involving different road safety studies and consultancy services.

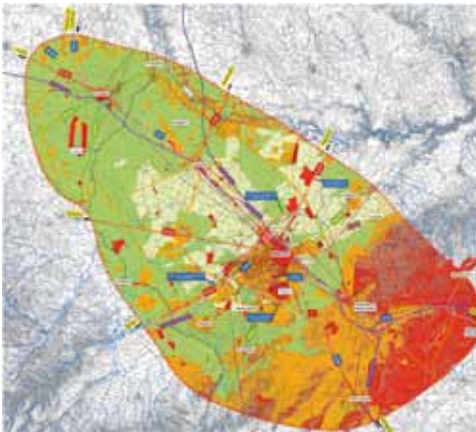
Our experience in the sector has been the principal mainstay for the increase of our international projects, carried out in conjunction with the large Spanish concessionaries and construction companies.

Throughout 2010, we were contracted to work on domestic projects not only by Spain's National Government, but also by many of its Regional Administrations, such as Aragón, Madrid, Valencia, Catalonia, Galicia and Andalusia, among others, as well as for Private Organisations. We also strengthen our position abroad, in countries such as Ireland, Portugal, Georgia, Serbia and the USA.

In **Spain** Eptisa finished the *Preliminary design and Construction Design of the A-2 Highway upgrading works between CH 232.8 and CH 340* for Ferrovial. As well as the *Detailed Design of seven weighing stations*, for the General Roads Directorate of the Public Works Ministry of Spain, and the design of the *Duplication of the M-404 Road from A-5 to M-407* in Madrid province for Mintra.

>> **DETAILED DESIGN TO UPGRADE THE M-50 MOTORWAY IN DUBLIN, IRELAND**





>> **FEASIBILITY STUDY IN ACCORDANCE WITH SPANISH LAW 30/2007, AND PRELIMINARY DESIGN WITH ENVIRONMENTAL IMPACT EVALUATION. EXTENSION OF THE AP-36 OCAÑA - LA RODA DUAL CARRIAGE**



>> **ROAD SAFETY 2009 TO THE GENERAL HIGHWAYS AGENCY OF THE AUTONOMOUS REGION OF MADRID**

Throughout the last year, we continued to work on the *Preliminary and Construction Designs of the A-7 Mediterranean Highway* for the third lane carriageway widening between CH 724 and CH 741, and the *Preliminary and Construction design of the A-66 "Autovía de la Plata" Highway. Section: Fontanillas de Castro – Zamora*, also for the General Roads Directorate of the Public Works Ministry.

Other projects we worked on last year, included the *Construction Design of the Arquillos Bypass on the A-312* for the Public Works Department of the Regional Government of Andalusia and the *Detailed Design of the M-311 Road upgrade. Section: M-302 to M-404 in Chinchón (Madrid)*. Also in Madrid, we worked on the *Dual Carriageway Conversion Project of the M-121 Road. Section: A-2 – Meco*. For the Regional Government of Valencia we drafted the *Preliminary and Construction Design of the CV-70 Bypass. Section: Alcoy-Benidorm in the province of Alicante*.

Throughout 2010 we underwent an increase in the number of Public-Private Partnerships projects both in Spain and abroad.

We participated in the *Tender Design for the Construction of the 4th Centenary Highway. Section II: Granátula de Calatrava-Valdepeñas*, for the joint venture formed by Sacyr-Rayet Construcción, which was finally awarded with the contract.

We collaborated in other tender projects for public works, such as the *Sector 2 of the province of Huesca (2 HU), for the Aragon Highways Structure Network*; and the *Júcar Highway. Section II: Motilla del Palancar-Albacete. Subsection 6: Madrigueras-Albacete*.

During 2010 we implemented the *2009 Road Safety Study contract for the General Directorate of Roads of the Madrid Region*, which are scheduled to be completed in 2011. Also in the Road Safety field, we worked within the framework of the Road Safety Audit of the Kakheti Region in Georgia.

We continued working on the *Feasibility Study, in accordance with Spanish Law 30/2007 and the Environmental Impact Assessment, of the AP-36 Highway Extension, Section Ocaña - La Roda to Chinchilla*, for the General Roads Directorate of the Public Works Ministry of Spain.

In the **Technical Assistance and Quality Control** fields, despite the slowdown in new infrastructure construction, we were contracted to work on the *Adaptation, Upgrade and Conservation of the A-2 North-eastern Highway Corridor. Section: Guadalajara/Soria-Calatayud*. During 39 months, Eptisa has also been engaged in the control and quality assurance of the works involved in the *Connection of the A-8 Highway with the Urumea Highway in the Basque Country*. In 2010 we were awarded with the contract to work in Galicia providing support services to the supervision of the project and construction works of the A-52 communications hub in the Portuguese border.



CONSTRUCTION DESIGN FOR THE ALGARVE LITTORAL SUB-CONCESSION IN PORTUGAL >>

The Algarve Littoral Sub-concession is a road system of approximately 270 kilometres in length which involves not only the construction of new sections of highway, but also the upgrading of existing ones.

The Consortium formed by Eptisa-Intecsa has drawn up a number of different detailed designs.

Eptisa's tasks within the Consortium are the development of the layout and construction design of the EN125 sections, EN2 link road and EN 395, including the geological and geotechnical study, pavement and structures design both for the new sections of highway and the upgrades ones.

CONSTRUCTION SUPERVISION OF THE E-80 HIGHWAY, SERBIA >>

As part of the programme to modernise the Pan-European Transport Corridor X, one of Europe's principal communications arteries connecting Salzburg with Thessalonica and Istanbul, Eptisa is working in the construction supervision of several sections of the new E-80 highway through Serbia.

The total budget of the construction works is an estimated 600 million euro, which will be co-financed by the EIB, the EBRD and the World Bank.

Eptisa will be supervising the works done by several international contractors who are working on nine segments of the Dimitrovgrad – Prosek road section connecting Serbia with Bulgaria. The new highway will be 60 kilometres long and includes 43 bridges and viaducts, 4 tunnels and 3 junctions.



PRELIMINARY AND CONSTRUCTION DESIGNS FOR THE A-7 MEDITERRANEAN HIGHWAY, WITH THE ADDITION OF A THIRD LANE PER CARRIAGEWAY, SPAIN <<

The project involves the addition of a third lane to each carriageway of the A-7 between kilometre points 724 and 741. Section: Crevillente (Link with the AP-7) – Orihuela/Benferri Link Road. The project includes the redevelopment of the existing link roads and converting these to dumbbell interchanges and the widening/demolition of the existing structures.

Eptisa's activities include the layout and earthworks design, climatology and drainage, geological and geotechnical studies, traffic and pavements design, traffic flow solutions during the works, environmental assets, complementary works, specifications, budget, and road safety.

DETAILED DESIGN FOR THE A-66 HIGHWAY "RUTA DE LA PLATA". SECTION: FONTANILLAS DE CASTRO – ZAMORA (N), SPAIN

>>

The purpose of this layout and construction design is the creation of the documents required to provide a detailed definition of the construction works.

The A-66 Highway "Ruta de la Plata" is one of Spain's principal communication routes. Running from the city of Gijón in the north to Seville in the south, it serves many of the main population centres in western Spain. The town of Benavente is currently linked with the Zamora by the N-630, trunk road, with the new design the new section of the highway will complete the A-66 corridor.

The main purpose of the project is to upgrade the road connection linking Fontanillas de Castro with Zamora (N) and making possible to drive all the way from Benavente to Zamora (N) by dual-carriageway. This upgrade will not only considerably shorten journey times, but also improve roadway safety whilst connecting both Benavente and Zamora with the adjoining stretches of the A-66 highway.



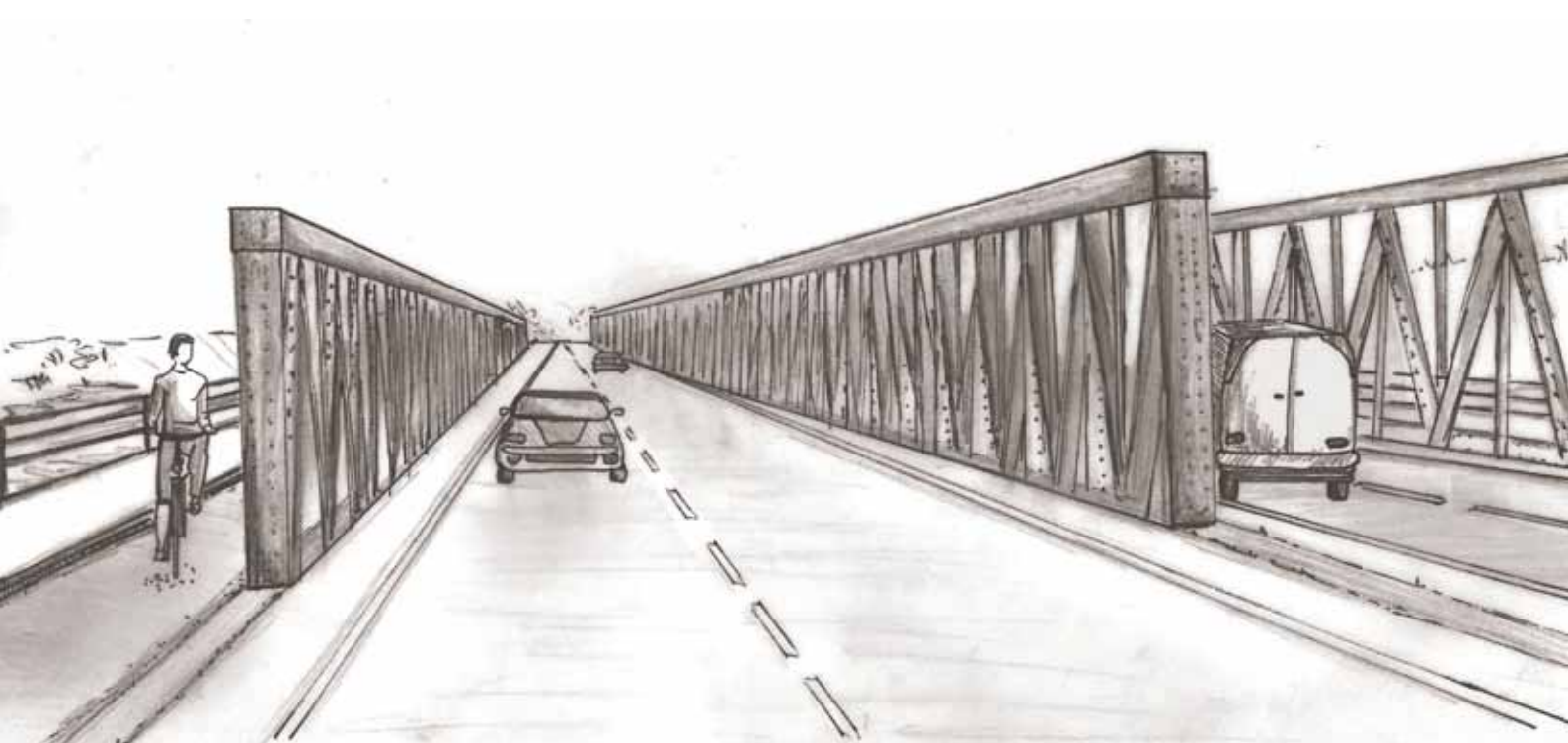
AUSCULTATION OF A RETAINING SLOPE ON THE A-6 HIGHWAY, SPAIN

>>

Eptisa has installed an auscultation system to monitor the slope at 418 kilometre point of the A-6 during the stabilisation works and subsequent operational phase.

The behaviour of the slope is monitored using inclinometric pipes of up to 80 metres in length and piezometers at the different elevations of the retaining slope, load cells in the anchor points of the retaining walls and surface monitoring surveying techniques. The electrical sensors are connected to an automatic metering station. The results have been made compatible and can be consulted online using the CELOSÍA program of the Spanish Ministry of Public Works.

>> PRELIMINARY DESIGN OF THE BRIDGE
OVER THE CARRERAS RIVER IN ISLA
CRISTINA, SPAIN



In **structures**, the Public Works Agency of the Regional Government of Andalusia awarded Eptisa the *Preliminary design of the bridge over the Carreras River*, which forms part of the new access to Isla Cristina (Huelva), from the N-431 road. The operation will consist of two different phases. The first one is the technical study of the current bridge and the diagnosis of its load-carrying and functional capacities including the necessary tests. And the second phase is the design of the new bridge running parallel to the existing one.

In **Portugal** we worked on the *Construction Design for the Algarve Littoral Sub-concession*. This sub-concession was awarded to the “Grupo Rodoviario Algarve Littoral” following a tender organised by Estradas de Portugal S.A. (EP). The project will help to improve mobility within the transport infrastructures of southern Portugal.

In **Serbia** we were contracted to carry out the *Construction Supervision of the E-80 Highway*, a highway which forms part of the *Pan-European Transport Corridor X*. The new highway will be 60 kilometres long and includes 43 bridges and viaducts, 4 tunnels and 3 interchanges.

The Roads Department of the Ministry of Regional Development and Infrastructures of **Georgia** awarded the consortium led by Eptisa, participating the Georgian company “Transport”, with the contract to prepare a detailed design of one of the principal highways in Georgia.

In **ports** we have been heavily involved providing design and technical assistance services. We completed during 2010 our technical assistance contract in the Port of Melilla. And the Spanish Port Authority also contracted us to carry out the preventive and predictive maintenance of the New Passenger Terminal in the mentioned port.

Another of our 2010 projects, is the *Technical Assistance to the construction management of the Esplanade and the Commercial Wharves of the Botafoc Dock in Ibiza*, for the Port Authority of the Balearic Islands.

Outside Spain, in **Portugal**, we worked for the Ports and Maritime Transport Institute on the project for recovering the original 1997 project for the Port of Tavira, based on new geological information and planning.

Moving on to **airports**, last year Eptisa began to work on 12 new contracts, as well as continued working in the projects development, technical assistance and supervision works on previously awarded contracts in thirteen Spanish airports.

Therefore Eptisa was awarded with two contracts to provide technical assistance for the control and supervision at *Madrid-Barajas International Airport*. The first one involves the construction works of the new retail areas in terminals T1, T2 and T3, while the second contract comprises the works to build the new routes and taxiways accessing the area between runways 18 and 36.

At *Barcelona Airport* we provided technical assistance for the development of two projects for improving the push-back taxiways and for upgrading the drainage channels and safety areas at the ends of the runways. Eptisa also continued offering in Barcelona

airport technical support for the control and supervision of the works and facilities of the Platform East, Phase I.

At *Malaga Airport* we continued to provide technical assistance for the control and supervision of the Airfield Extension Works.

During 2010 we concluded our technical assistance for the control and construction works supervision of the electrical interconnection galleries at *Alicante Airport*, whilst simultaneously developing the project for new electrical connections from a new Iberdrola substation at the airport.



At *Seville Airport*, Eptisa started two new technical assistances. The first one consisted on the adaptation of the wiring of several buildings to bring it into line with current legislation. And the second, implemented as part of a framework contract involving five different projects. This contract follows a similar one signed with Valencia Airport, involving the design of eight separate airport installation improvement projects.

At *Bilbao Airport* we provided technical support for the enlargement of the aeronautical lighting.

At *A Coruña Airport* we began to provide technical assistance with respect to the design of the airfield upgrading project, to bring the mentioned infrastructure into line with the provisions established in Spanish Royal Decree 862, regarding Operational Safety.

At *Vigo Airport* Eptisa began the control and supervision works to improve the reliability of the electricity supply network, and at *Murcia-San Javier Airport* we were involved in supervising the upgrading works of the check-in and departure areas of the terminal building.

At *Zaragoza Airport* we started to provide technical assistance for the project comprising the categories II and III appointment.

At *Fuerteventura Airport* Eptisa initiated the contract of technical assistance for drafting the project for the adaptation and improvement of the terminal building air-conditioning system.

And finally, at *Almeria Airport* we continued to provide technical assistance for the management works on the Terminal Building Extension and Redevelopment Project.

<< DESIGN TO UPGRADE THE
AIRFIELD OF A CORUÑA
AIRPORT, SPAIN

Eptisa continues to be a benchmark among engineering services providers working within the Spanish and international transport infrastructure markets

TECHNICAL ASSISTANCE TO THE CONSTRUCTION MANAGEMENT OF THE ESPLANADE AND THE COMMERCIAL WHARVES OF THE BOTAFOC DOCK, SPAIN

>>

Eptisa, as part of a Joint Venture, is providing technical assistance to the construction management of the "Esplanade and Commercial Wharves of the Botafoc Dock". Specifically speaking, the project includes the construction of a passenger terminal and general cargo handling facilities at the Port of Ibiza.

This technical assistance involves all those works related with the construction of the pile-mounted jetties, caisson jetties and the adjoining esplanades and platforms commissioned by the Port Authority. Eptisa's role includes monitoring the progress of the works, quality control, geotechnical control, budgetary control, time management, health and safety control, monitoring and follow-up of the Environmental Plan.



DETAILED PROJECTS IN THE BARCELONA AIRPORT, SPAIN

>>

With the objective of complying with the regulations currently in force as stipulated by Spanish Royal Decree 862/2009 and of enabling airport certification, Eptisa signed two contracts. These involve the drawing up of two design projects with respect to Barcelona Airport related with covering the drainage network built between the runways and the taxiways, the grading of the safety verges and areas at the ends of the runways and installing the central beacons of the push-back taxiways in front of the new and old terminal buildings.



CONTROL AND SUPERVISION WORKS FOR THE NEW COMMERCIAL FACILITIES IN THE TERMINALS T1, T2 AND T3 OF MADRID-BARAJAS INTERNATIONAL AIRPORT, SPAIN

>>

The project involves the provision of warehouse facilities in terminals T1, T2 and T3 of Madrid-Barajas Airport. It will also include the construction of two new access routes equipped with airport security filters running from the street to the interior of the controlled area of the aforementioned terminals.

Eptisa has been contracted to review the construction design, provide technical assistance regarding the control and monitoring of the works and installations included in the works contract in order to ensure the qualitative, quantitative, geometrical and time aspects of the project are correctly controlled. The brief also involves Eptisa being responsible for the coordination of occupational health and safety procedures of the construction and installation works contracted, monitoring compliance with regulations currently in force. Finally, the contract includes the environmental monitoring of all the works, of the Airport's operational conditions and of the physical safety of the areas in which the works are carried out and the installations are fitted.



I Water and the Environment

Eptisa is participating in the design of major Hydraulic Infrastructures and is collaborating on Hydrological and Environmental Plans both in Spain and internationally

Water and Environmental activity increased during 2010 reaching 27% of total company turnover. In addition to Spanish projects, water-related activity in Europe has positioned us as the benchmark international engineering consultancy company within the sector. The company also implemented a greater number of Turnkey Waste Water Treatment Plant Projects in 2010 both in Spain and abroad.

In **Hydraulic infrastructures**, special mention must be made of our contract with “Iberdrola” regarding the detailed design for *Gouvães Hydroelectric Plant* in **Portugal**. This infrastructure is located in the water catchment basin of the River Tamega and forms part of the National Reservoir Programme with High Hydroelectric Potential developed by the Portuguese government. Eptisa’s role in the project has involved designing the geotechnical, hydraulic and civil engineering tasks with respect to the hydraulic head construction works, which basically consist of: the dam, water circulation in tunnel, forced circulation, underground hydroelectric power plant and the return circuit to the river bed.

Also in Portugal Eptisa was commissioned by “Endesa Generación” to design its *Girabolhos Hydroelectric Power Plant* on the River Mondego, which also falls within National Reservoir Programme with High Hydroelectric Potential (PNBEPH) and developed by the Portuguese government. This project involves the construction of two dams and their respective reservoirs, each with its own hydroelectric power plant. Eptisa also designed all the access routes to these and the rerouting of two sections of trunk roads flooded by the project.

In **Spain**, Eptisa works for large organisations in the design of projects for improving, adapting and operating hydraulic infrastructures. In 2010 for the Andalusia Water Agency’s we worked in the *Detailed Design to bring the Spillway of the La Viñuela Dam into Line with New Regulations*. The purpose is to build an additional spillway alongside the existing one to comply with current legislation.

In relation to dam safety, Eptisa works in the *Emergency Plan for the Meicende Reservoir in Arteixo, A Coruña*. The dam has the purpose of supply water for the industrial processes of the nearby Alcoa Europe and SGL Carbon factories.

Our activity in
Turnkey Projects
of Waste Water
Treatment Plant
increased in 2010



<< AUSCULTATION OF THE PYRENEAN EBRO HYDRAULIC DAMS, SPAIN

The same client also commissioned us with the *Detailed Design of the Supply Outlet Bypass of Meicende Reservoir*, which involved converting the element in question into a scour outlet and carrying out complementary studies. The purpose of this project is to equip the reservoir with two scour outlets to make it compliant with the regulations currently in force.

Eptisa is a benchmark with respect to dam **auscultation** works. We performed the monitoring and auscultation systems in the dams of Albina and Siles, the Guadalhorce – Guadalteba and the Llanos del Cadimo Dam. 2010 saw us complete our work on the Ordunte, Belesar and Breña II Dams. We continue providing our services in maintenance and surveillance of hydraulics infrastructure for the main Spanish Catchment Basin Authorities, the Madrid Water Agency (Canal de Isabel II) and the electric company Eon.

In this area we carried out the installation of the *Auscultation and Automation System at the Operation Area 3 Dams for the Tajo River Basin Authority* and located in the Spanish provinces of Caceres and Salamanca, specifically in the dams of Navamuño, Jerte, Gabriel y Galán, Arrago, Valdeobispo, Borbollón and Rivera de Gata.

Likewise, for the Spanish Electric company “Endesa Generación” we carried out the Topographic and Auscultation Control, including follow-up reports, for the Pyrenean Ebro Hydraulic Production Unit at a total of 27 of its dams.

With respect to the **improvement and maintenance** of infrastructures, we receive diverse commissions from Spain’s different Public Administrations such as to improve

technical support for the *Maintenance, Conservation and Operation of the Automatic Hydrological Information System (SAIH) in the Guadiana River Catchment area*. The works involve the conservation of the structures, as well as the preventive and corrective maintenance of the metering and telecontrol systems of the remote stations and maintaining the information and telecommunications systems.

In engineering services for the design, upgrading and maintenance of the **Water Supply and Sanitation Network**, Eptisa is the benchmark both domestically and internationally.

In **Spain** we are collaborating in the preparation of the *Castilla-La Mancha Water Supply Master Plan* by providing consultancy services and technical assistance for the drawing up of the plan and performing all the preliminary tasks. It includes the fieldwork for compiling all the water and sanitation network infrastructures from all of Castilla-La Mancha's population centres, a total of 1,850 being visited in 919 municipal districts, in a database for processing and managing the data. As well, Eptisa developed a web application based on geographic information systems for displaying the information.

Throughout 2010 we worked for a number of Spain's regional governments on the design of projects for improve the water supply networks of municipalities in the Galicia, Catalonia and Andalusia Regions. We also signed a framework contract with Canal de Isabel II, the Madrid Water Authority, to design water supply infrastructure projects in the Region of Madrid.

<< **MAINTENANCE, CONSERVATION AND OPERATION OF THE AUTOMATIC HYDROLOGICAL INFORMATION SYSTEM (AHIS) IN THE GUADIANA RIVER BASIN, SPAIN**



Water and Environmental activity increased during 2010 reaching 27% of total company turnover

During 2010 Eptisa worked in the *Technical Assistances to the General Directorate for Hydraulic Works* in Lugo (Spain) in order to provide the work supervision for the Water Supply and Sanitation network of the city.

In **Romania** we have been working with ten regional water companies all over the country since 2000, both on design and supervision and project management for water and sanitation infrastructure projects.

The regional water company of the county of Suceava has awarded us a second project entitled *Technical Assistance for the preparation of the Cohesion Fund Application, and the works supervision for the upgrading of the Water and Wastewater infrastructures in Suceava County*.

In 2010 we were awarded the contract to carry out the project entitled *Technical Assistance for the Works Supervision of the Water and Sanitation Infrastructure Extension and Modernisation in Bistrita-Năsăud County*. For this project the services we provided consist of the supervision of the seven works contracts for the extension and modernisation of the water and sanitation infrastructures.

In **Serbia** we continued to perform our role as the leading company within the framework of the *European Municipal Infrastructure Support Programme*. Financed by the European Union, its purpose is to carry out a series of feasibility and environmental impact assessments for the construction of municipal landfill sites, waste water treatment plants, supply networks and drinking water treatment plants.

>> MODERNIZATION OF WATER AND WASTEWATER INFRASTRUCTURE IN SUCEAVA COUNTY, ROMANIA



In **Croatia** in 2010 we begun the *Supervision of works for the construction of the water supply and sewerage system and wastewater treatment plant in Slavonski Brod* and implemented the project in accordance with FIDIC standards.

In 2010 we collaborated with the Public Authorities in the major **Hydrological Plans** both nationally and internationally, providing engineering and technical support services as well as planning and study support, using the latest technologies at all times.

In **Spain** we collaborated with the Duero River Basin Authority in drawing up the Hydrologic Plan Proposal for the Spanish part of the Duero Hydrographical Catchment Area. The public inquiry was opened on December 15, 2010.

The Hydrologic Plan Proposal consists of a report with fourteen appendices and more than 64,700 pages, that contains a Regulations and Legislation Document, and the Environmental Sustainability Report, between other documents. The information used is stored in the “Mírame” alphanumeric and spatial information system from the Ministry.

Regarding Water Public Domain management, we completed the tasks corresponding to our technical support for the *National River Restoration Strategy Project in the Rivers of the Northern Spanish Catchment Basin*.

Outside Spain, in 2010 we finished the technical support project for the *Integrated Management of the Neretva River Basin* in **Bosnia Herzegovina**. The purpose of the project is to provide support to the authorities with respect to the water resources management plans.

In the **NIS Countries** we are working in the *Trans-boundary river management for the Kura River* project being carried out in **Armenia, Azerbaijan and Georgia**. Eptisa is providing technical support services to the different authorities in the strengthening of their institutions and the development of their capabilities in the water resources management.

Regarding the **Flood Risk Prevention** area, in **Spain**, Eptisa was awarded with a contract for the *Technical Support for the Development of the National Cartography System of Flood Areas in the Northern Spanish Hydrographical Region of Cantabria*. The project responds to the new Spanish Royal Decree regulations for the Evaluation and Management of Flood Risks by focusing on performing a preliminary flood risk evaluation before carrying out historical, geomorphologic, hydrological and hydraulic studies to enable the development of hazard and risk maps of the region.

In **Turkey** we are providing *Technical Assistance to mitigate flood risk in flooded areas in the GAP region (south-eastern Anatolia)*. The principal objective of the project is the long-term prevention of floods and their effects.

2010 saw us working in **Serbia** on the *Technical Support for the Preparation of Flood risk Maps and Flood Hazard Maps*, based on GIS technology so as to be able to integrate the information into the national Water Management Information System.

In **Hydrogeology**, we continued working for ADIF, the Spanish Railway Infrastructures Authority, in hydrogeological surveys for high-speed railway infrastructure. We completed for the Júcar River Catchment Authority the works for the evaluation of the groundwater resources, which included the data integration and all the hydro-geological surveys and studies of the groundwater network system. In 2010 we were also awarded

>> **TECHNICAL ASSISTANCE FOR THE PREPARATION OF THE FLOOD RISK MAPS IN THE REGION OF CANTABRIA FOR THE NATIONAL CARTOGRAPHY SYSTEM, SPAIN**



>> **MANAGEMENT AND SUPERVISION OF WORKS OF EXTENSION AND REHABILITATION OF THE WATER AND WASTEWATER INFRASTRUCTURE IN IASI COUNTY, ROMANIA**



with the contract to provide technical support for the development of the technical solutions regarding groundwater resource management, that will be include in the hydrologic project plan from the Júcar River Catchment Basin.

Last year we also finished the *Study of the Interrelation of Rivers and Aquifers* in the Inter-regional water catchment basins. The contract included the studies of the water run-off volume of coastal aquifers of the Júcar river system. This study will culminate in 2011 with the publication of two technical books.

We signed a contract with the Secretary of the Planning and Infrastructures of the Publics Works Ministry of Spain involving *Hydro-geological Fieldwork, Tests and Studys related with Railway Infrastructures*.

In 2010 we were extremely active in the **Waste Water Treatment Plant – WWTP** area. Eptisa provides design and detail engineering, installation, assembly, works supervision and WWTP operation services both in Spain and abroad.

In **Spain** we continued in the design, construction and operation of waste water treatment plants. An activity, in which we cover the full installation cycle from the design, detail engineering, construction and equipment installation to the operation phase.

In 2010 we executed the turnkey project of the Campos del Río WWTP in Murcia, which was opened by the President of the Regional Government of Murcia, Mr. Ramón Luis Valcárcel. Another project to be completed was the Ribera del Fresno WWTP in Badajoz, which is now in operation phase. Last year we executed the redevelopment of the WWTP owned by COREN, Spain's largest poultry slaughterhouse.

Last year's ongoing WWTP projects were Cuiña-San Cibrao, for the Cantabrian Water Authority and the tertiary treatment of the Totana Plant (Murcia) for the General Water Agency of the Region of Murcia, which includes the detail engineering of the civil works and equipment, the installation and assembly of equipment and the operation.

In 2010 the activity increased both in the number of projects awarded and in the geographical area cover. During 2010 we were awarded the project to “Upgrade the Water Supply of Plasencia in Caceres Province”, the “Redevelopment of Filter Line II of the Carambolo DWTP in Seville” and the “Construction of the Pontearreas DWTP in Pontevedra”.

With respect to **Romania** mention must be made of the onset of our first Turnkey Project which sees us, in conjunction with Aqualia, implement the full cycle from the construction design to the execution of the refurbishment works of the *Zimnicea WWTP*.

The award of the second Turnkey Project involving the improvement of the environmental quality and life standards of the Agnita and Dumbrăveni regions in the Romanian, has consolidated our position as the benchmark company in this type of projects. This particular turnkey project, again in collaboration with Aqualia, involves the design and construction of two WWTPs in the municipal districts of *Agnita and Dumbrăveni*.

Since the latter part of 2010 we provide technical assistance to the Water Directorate of the Republic of Serbia in the preparation of the *Sewerage and Wastewater Strategic Master Plan for the West Morava River Basin*. Within this project, we will prepare the tender documents for the construction of a waste water treatment plant.

In **Waste Management** special mention must be made of the projects in Serbia, Turkey and Romania for the construction, expansion and refurbishing of landfills.

In **Serbia** we worked on a *Feasibility Study and Environmental Impact Assessment for the Construction of the Kolubara District Regional Landfill*. Eptisa is also providing technical assistance to the Serbian Ministry of Environment and Spatial Planning for the preparation of a feasibility study, detailed design and tender dossiers for the construction of the first Hazardous Waste Treatment Plant in Serbia.

In the **NIS Countries** region we were awarded the *Waste Governance within the countries of European Neighbourhood and Partnership Region (ENPI East)* project, one of the main components of the Regional Indicative Programme for the eastern part of Europe. The purpose is to reduce the risks of pollution arising from inappropriate management of solid waste in **Azerbaijan, Armenia, Belarus, Georgia, Moldova, Russia and the Ukraine**.



>> CUIÑA-SAN CIBRAO WWTP
TURNKEY PROJECT, SPAIN

In **Spain** we are working on the draft tender regarding the construction of a Waste-to-Energy Plant in Asturias for the management of waste aimed at the generation of electrical energy.

In the **Environmental** area, Eptisa is collaborating with public bodies on environmental management programmes and urban and industrial waste treatment for contamination prevention plans.

Throughout 2010 we carried out *Environmental Impact Assessments* associated with transport and water infrastructures such as, the environmental impact of the construction of the Gouvães Hydroelectric Power Plant in Portugal and the environmental impact studies of construction of the water supply infrastructures of the city of Zaragoza.

Within the airport sector we completed our contract for the *Environmental Monitoring of the Construction Works* at Madrid-Barajas International Airport and for our Environmental Advisory Services during the airfield expansion works at Malaga Airport. Also in the field of environmental services, we completed the environmental surveillance work performed during the season at the Valdezcaray ski resort.

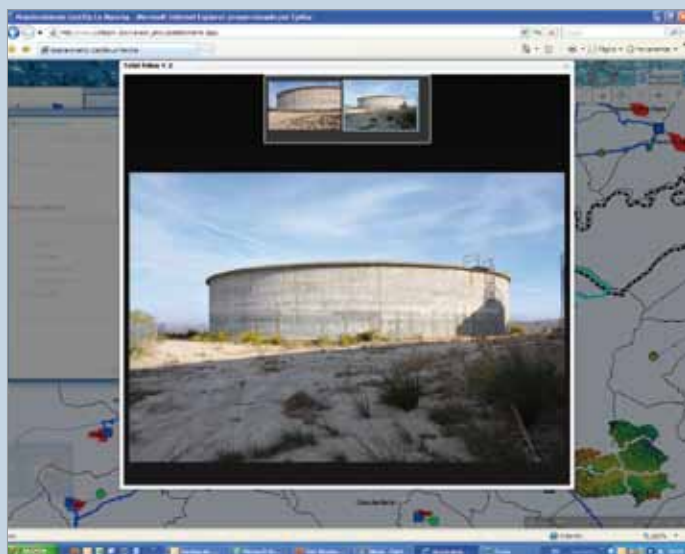
We were also involved in the *Landscape Recuperation and Integration Study* in the construction of the Gouvães Hydroelectric Power Plants.

In 2010 in the **Industrial Environment** sector we drew up the *Aggregate Quarries Plan* for the production of concrete during the construction of the Gouvães Hydroelectric Power Plant in Portugal for Iberdrola.

The Júcar River Catchment Authority commissioned us to prepare the *Lower Júcar Integral Sediment Treatment Plan*, which includes the characterisation of the sediment, a field campaign and analysis, solutions study and construction plan for the solution adopted.

In 2010 we completed our work for *Ecoembes* regarding the inspection of the companies performing the characterisation and quality control of lightweight waste and bulk rubbish.

As a result of our commitment to the Environment, at Eptisa we approach every project with the aim of finding the most suitable solution for reducing its environmental impact



TECHNICAL ASSISTANCE FOR THE PREPARATION OF THE CASTILLA-LA MANCHA WATER SUPPLY MASTER PLAN, SPAIN

<<

As a result of the approval of the Spanish Law regulating the Integral Water Cycle, Eptisa was contracted to draw up a new Water Supply Master Plan for the Region of Castilla-La Mancha.

The aim of the plan that Eptisa is drawing up is to provide all the population centres of this central Spanish region with a water supply service with high-quality water resources available under any circumstances. As well provide a network of suitably managed water infrastructures adapted to current legislative requirements capable of delivering sustainable and efficient services.

Eptisa's role in the project involves the provision of technical assistance services which includes fieldwork and the compilation of a water treatment and management database.

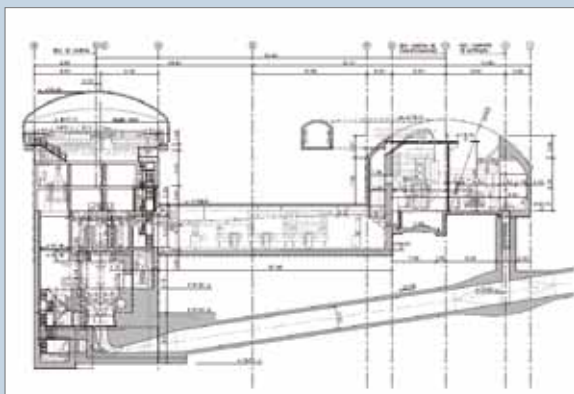


THE ZIMNICEA WASTE WATER TREATMENT PLANT TURNKEY PROJECT, ROMANIA

>>

The purpose of this project is to design and construct a new waste water treatment plant in strict accordance with EU environmental protection directives that will improve water quality, facilitate the management of sediment levels and provide sewage and drainage services to a local population of 14,800.

During the first phase of the project Eptisa carried out the technical, functional and architectural design of the plant. Following the construction phase, which included the demolition of the existing building and the construction of the new plant, Eptisa executed the installation of all the equipment. We were also responsible for the training of the workforce in the running, operation and maintenance of the new plant.



DETAILED DESIGN OF THE GOUVÃES HYDROELECTRIC PLANT PROJECT, PORTUGAL

<<

The Gouvães Plant is a reversible type facility with an underground power generating plant. It consists of the upper Gouvães reservoir, formed by damming the River Torno, a tributary of the River Tâmega, which it joins via its left-hand bank, and by a long water circuit (7.67 kilometres), most of it underground, which ends up in the Daivões reservoir within the course of the River Tâmega. The generating plant, with 4 pump/turbine units, is located close to the dam of the second of these two reservoirs at a depth of over 330 metres. The construction works have been budgeted to cost 470 million euros.

The main activities performed by Eptisa on this project were:

- Solutions analysis, the study of alternatives and development of the reservoir (Gouvães), water circuit and generating plant solutions finally chosen.
- The geological-geotechnical study of the entire operation, including the follow-up and management of the field and laboratory campaign carried out by the client.
- Seismic-tectonic hydrological studies of the flood control and sedimentation of the reservoir. Hydraulic studies of the watercourse (backwater curves, capacity curves, etc.).
- Hydraulic: Dam (flood control means and measures, spillway, scour outlets and ecological flow), and the water circuit (Downwelling study of inlets and turbines, calculation of ventilation in valves and shutoff sluices, study of the circuit in both steady state and transitory state).
- Structural and stability calculations: Dam and drainage elements, water circuit tunnels, operational and handling structures, excavation and support of the cavern, generating plant and access tunnels and vertical access shaft and cables.
- Calculation and sizing of the steel forced circulation pipe.
- Calculation of anchor blocks.

In short, Eptisa carried out the geotechnical, hydraulic and civil engineering works for the definition of all the works that form part of construction of the hydroelectric plant.

DETAILED DESIGN TO BRING THE SPILLWAY OF THE “LA VIÑUELA” DAM INTO LINE WITH NEW REGULATIONS, SPAIN

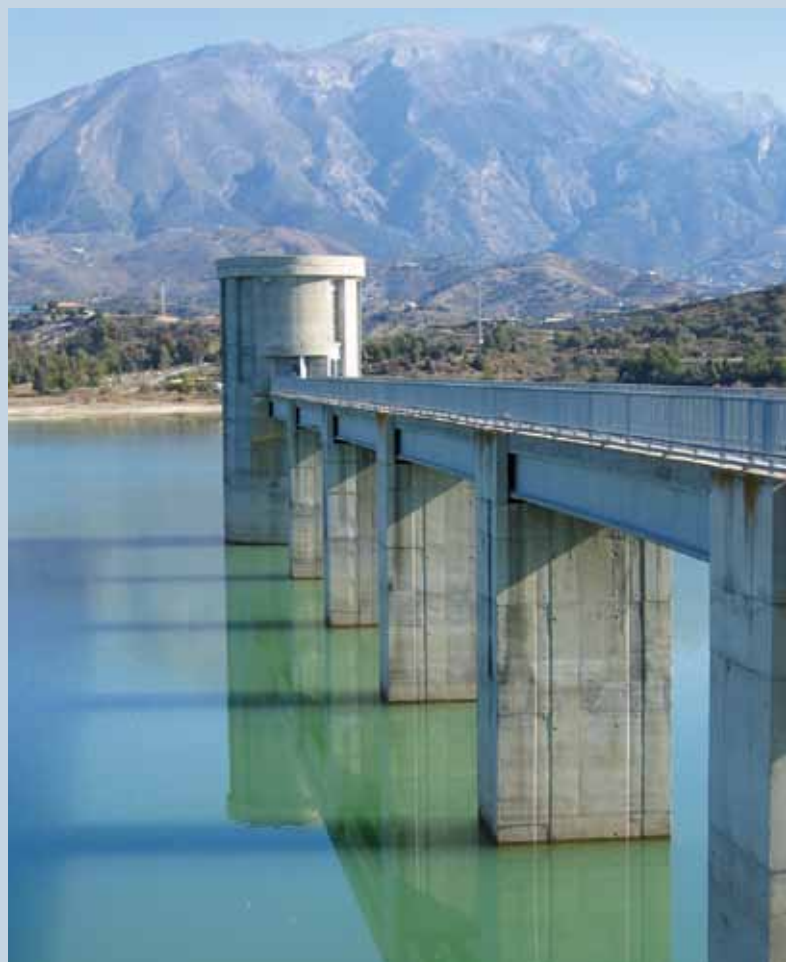
>>

The purpose of this project is to add an additional spillway to the “La Viñuela” dam alongside the existing one to comply with current legislation. The dam currently has a surface-level spillway whose capacity has been found to be insufficient.

In an attempt to maintain the philosophy of the original project plan and keep its environmental impact to a minimum, the outlet of the planned new spillway mirrors that of the current one by having the same spillage length, profile and retaining wall convergence angle. The total length of the new spillway is approximately 550 metres, of which 180 are in a tunnel with the rest running through an open channel.

The most characteristic feature of the new spillway is the tunnel section whose first few metres run beneath a road that must remain open throughout the execution of the works; an added difficulty is that there are only 4 metres of coverage margin in the most unfavourable area. The terrain through which the spillway runs mainly consists of quartzite schist.

The principal tasks carried out are: topographical works, geological-geotechnical study, solutions study, lamination and capacity studies of the current and complementary spillways for different flood levels, tunnel support calculation, structural calculations, definition of access routes, construction plan, and the health and safety study.





DETAILED DESIGN OF GIRABOLHOS HYDROELECTRIC PLANT PROJECT, PORTUGAL

<<

Eptisa design the construction project of the Girabolhos Hydroelectric Plant on the River Mondego for the company "Endesa Generación". This project forms part of the National Reservoir Programme with High Hydroelectric Potential (PNBEPH) and is being implemented by the Portuguese government.

The works planned consist of two dams and their respective hydroelectric power plants. The first of these is a 105.5 metre high arch dam (Girabolhos) holding back a

138 hm³ capacity reservoir that in turn feeds a reversible hydroelectric plant located at the foot of the dam capable of generating 338 MW of installed power from a flow of 505 m³/second.

Downstream there is a counter-reservoir (Bogueira) holding 57 hm³ of water behind a 75 metre high arch-gravity dam at the foot of which is a hydroelectric plant generating an installed power of 26 MW from a flow of 50 m³/second.

In addition to the dams and power plants, Eptisa was also involved in the design of the transit routes accessing them and in the rerouting of two roads flooded by the project, with the most noteworthy structures being two viaducts spanning the Girabolhos Reservoir, the lengths of which are 300 and 80 metres respectively.

IMPLEMENTATION OF THE EMERGENCY PLAN FOR THE ENCISO DAM IN THE EBRO RIVER CATCHMENT BASIN, SPAIN

>>

The purpose of the works commissioned by the "Presa de Enciso" joint venture FCC-Dragados is the implementation of the Emergency Plan as a step prior to the construction of the dam.

The plan involves the installation of a system designed to warn the local population of flooding. It consist of three electronic siren units fitted with a PLC-based telecontrol system and equipped with redundant communications (Wimax-GPRS). One of these units is located in the office with the other two being positioned downstream, thereby ensuring that the area affected by the rupture of the dam would receive a warning within the first half hour.

Eptisa's duties include the integration of the dam into the communications system of the Ebro catchment basin's AHIS network via the construction of a radio link between the dam and the Yerga primary relay point, two further intermediate relay points at La Cruz de Encineta and the base at Enciso. Furthermore, we carried out the installation of secured power supply equipment in the office, the installation of solar power supply feeds on the siren and the Enciso relay point, the installation of a LAN network in the office and the installation of siren and public warning system control software.



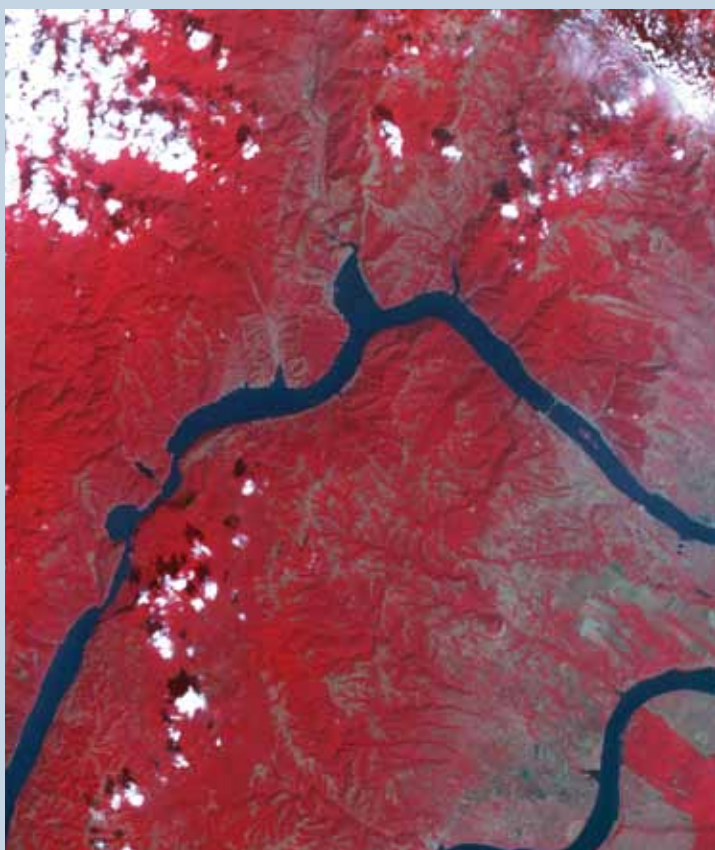
DESIGN OF THE EMERGENCY PLAN FOR THE "BARROS ROJOS" DIKES IN XOVE IN THE PROVINCE OF LUGO, SPAIN

<<

The purpose of this contract is the design of the Emergency Plan for the Barros Rojos dam up to 100 metres above sea level. This facility belongs to the Alcoa Europe aluminium smelting plant in San Ciprián (Lugo, Spain). Eptisa has already worked with Alcoa in the preparation of the Emergency Plan for the dam to a height of 85 metres above sea level and on the project to heighten the dikes to bring them up to the 100 metre contour line.

The principal tasks Eptisa was commissioned to perform were: an inventory of any possible effects downstream from the dikes, calculating the danger thresholds within the structure of the dikes, analysing the safety of the dikes, hydraulic analysis of the effects in the event of rupture, preparing temporary flooding maps, territorial zoning and risk analysis, risk assessment, emergency and organisation action measures and warning resources.



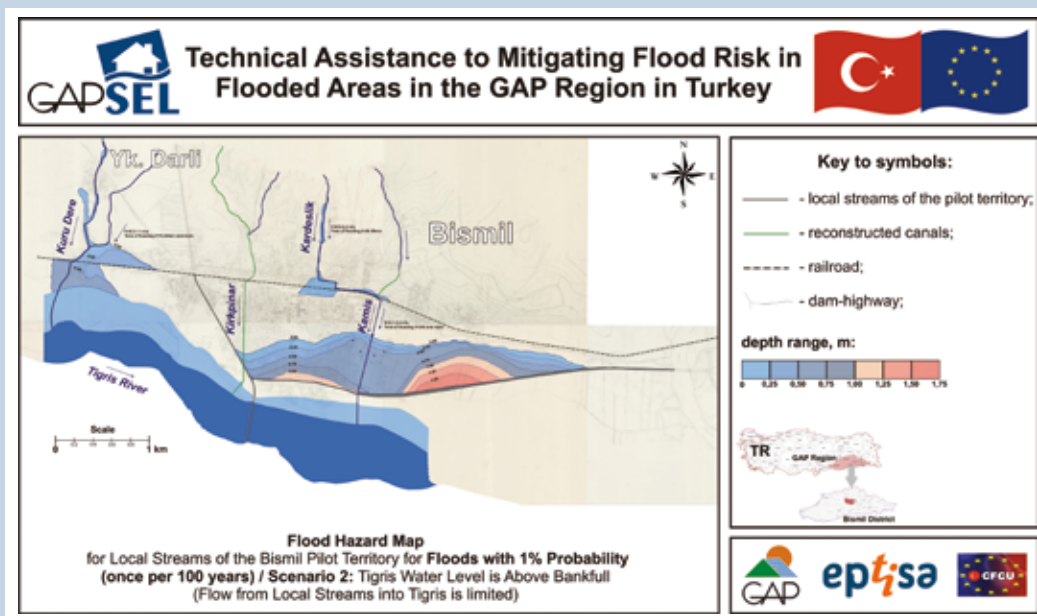


TECHNICAL ASSISTANCE FOR THE PREPARATION OF FLOOD RISK MAPS AND FLOOD HAZARD MAPS IN SERBIA

<<

This project is designed to assist in the process of bringing Serbia into line with the European Directive on the Assessment and Management of Flood Risks.

Eptisa is preparing the set of maps based on GIS technologies in order to facilitate their integration into the national Water Management Information System, which was also created by a consortium led by Eptisa as part of another EU-financed project. The maps of the flood prone areas will become part of the urban and spatial plans, working as a management tool for both protection and urban planning.



TECHNICAL ASSISTANCE TO MITIGATE FLOOD RISK IN THE GAP REGION (SOUTH-EASTERN ANATOLIA), TURKEY

<<

The main objective of this project is the long-term prevention of flooding and its effects in the South-Eastern Anatolia region in Turkey.

The technical support provided to the GAP Regional Development Administration by the consortium led by Eptisa has been split into two components: first, helping the GAP Regional Administration to implement a territorial planning, investment policy and social support programme in the six provinces of Batman, Diyarbakır, Mardin, Siirt, Şanlıurfa and Şırnak.

The second components involves a pilot project for the institutional strengthening of the local Administration for the sustainable management of flooding risk

as well as the appropriate management of natural disaster in the provinces of Batman, Diyarbakır, Mardin, Siirt, Şanlıurfa, Şırnak, Gaziantep, Adıyaman and Kilis.

As a recognition of the good work carried out by Eptisa and the optimum result achieved the Opening Ceremony held in the city of Şanlıurfa, was attended by the senior members of the European Union Delegation in Turkey and the Contracting Authority, as well as by the most important regional and local politicians.

I Building, Energy and Industry

During 2010 Eptisa increased its portfolio of Turnkey Projects

As a result of the downturn within the construction sector, Eptisa concentrated its efforts on developing its building activities and adapting these to the new market needs. Specifically speaking, over the past few years the company has moved towards a series of intervention-based engineering services such as Project or Construction Management aimed at overseeing the entire building process. The latest step of this development is the “turnkey project or applied engineering”.

Taking our original specialisation in architectural and engineering design as the starting point, we have expanded our services to include integrated construction and project management in order to complete the cycle whilst also offering to execute the works at a fixed price. In this way we assume full responsibility of the construction process.

In 2010 we continued to be active in the **industrial** sector, where we executed engineering and architectural design projects, above all for the aeronautic industry. Last year saw the opening of the Airbus parts manufacturing plant in **China**, with Eptisa being responsible for both the design and the construction management. The project involved the building of a plant for manufacturing parts for the Airbus A-320 and A-350 programmes, fruit of the joint venture between Airbus and Hafei.

Still with the aeronautics sector, in 2010 we worked on the *Aeronautical Engineering and Design Centre* at the Andalusia Technology Park. This contract involves overall project management, managing the contracts, implementation and coordination of all the works required to adapt the east wing of the Aerópolis Companies Centre building for use as offices.

>> **AERONAUTICAL ENGINEERING
AND DESIGN CENTRE IN ANDALUSIA, SPAIN**

In Madrid, and also for the industrial sector, Eptisa participated in the project involving the construction of an *Industrial Building for housing a postal distribution plant* in the San Fernando de Henares Business Park just outside Madrid.

With respect to Spain's north-western region of Galicia, mention must be made of the works we carried out in the commercial zone of the Port of Vigo involving the technical assistance and quality control of the construction of *Bioclimatic Facilities* within the business park there. The project included the application of an innovative concept regarding the construction of industrial premises that will house 40 companies within a constructed surface area of 57,000 m².



In the **logistics** sector we are involved in the project to build the *Goods and Logistics Platform in Medina del Campo, Valladolid*. Eptisa is responsible for the management of both the design and construction processes. In the Spain's Northern Provinces we are participating in the urban development project of a logistics area where we are responsible for drawing up the urban development plans and the project management of the construction.

In **singular buildings**, 2010 saw the completion of the construction works of the *Balenciaga Museum in Getaria, Guipuzkoa*. Eptisa participated in the design of the building structure project and the construction management. This is the first museum completely dedicated to a haute couture fashion designer and the exhibition space is housed in two interconnected buildings, one of which is a new build adjoining the renovated Aldamar Palace.

In Catalonia we were contracted to assist in the project involving the construction of the *Museum of Science, Environment and Climate of Lleida*. The 4,800 m² building will be located in the same area occupied by the Lleida Science and Technology Park and the future Humanity Park in the Turo de Gardeny.

In the Basque city of San Sebastian we are working on the works management for the construction project of the *Cultural Centre at the old Tabacalera* for the International Centre for Contemporary Culture. The works comprise the architectonic renovation of the old tobacco factory for conversion into a cultural centre. The project involves various spaces and uses within the 26,000 m² constructed surface area.

As far as public service buildings are concerned, in 2010 we were contracted by the local government to participate in the construction project for the new building that will house the *Judicial Seat of the Courts of Gerona*, where we provided our works management service.

>> GERONA COURTHOUSE BUILDING, SPAIN

Once more, EXPO Zaragoza 2008 placed its trust in Eptisa when it awarded us the contract to manage the project to convert the buildings that housed international pavilions during Expo Zaragoza 2008 for use as the *Zaragoza Courthouse*. This contract forms part of the second conversion phase of the Expo Zaragoza 2008 site. The first phase involved the adaptation of a number of other buildings to create a business park, works which were also carried out by Eptisa as Project Manager.

Eptisa was contracted to provide integrated works supervision and senior technical architectural management services for the *Illa Guinardó* Project. This included the construction of a Medical Centre, Day Centre and Home for the Elderly, a car park, a municipal market, a retail centre, a youth centre, 44 homes and the urban development of the entire 25,922 m² site.



In Madrid we worked on two of the city's emblematic buildings. Nova-caixagalicia commissioned us with the rehabilitation of its central offices in the Spanish capital's hundred-year-old Gran Vía, and the British Council contracted us to project manage the replacement of its lecture room building in Calle Martínez Campos. The latter involves the demolition of a 50-year-old building and the construction of a new lecture room building whilst conserving the 19th century villa with which it shares the plot.



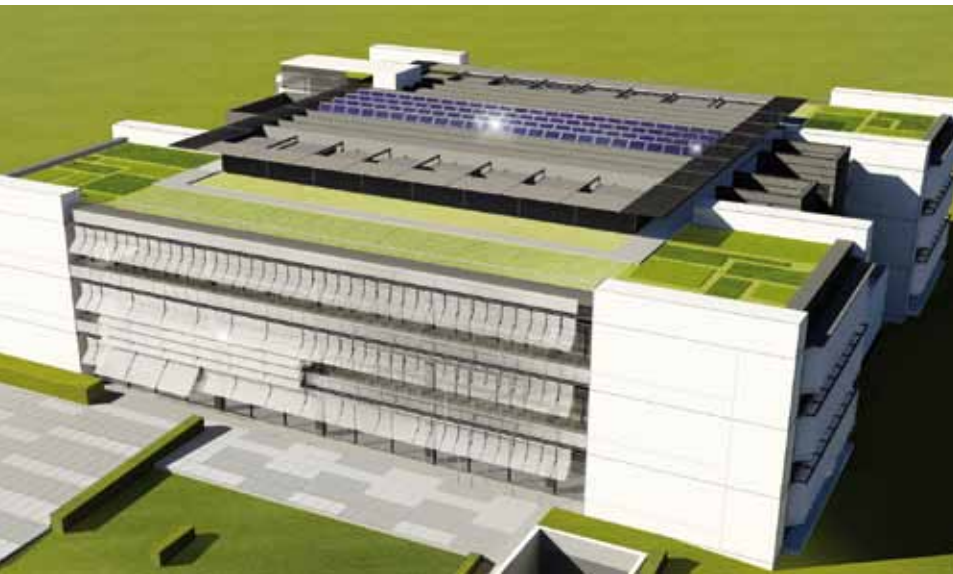
>> HEALTH CENTRE IN LES CORTS,
CITY OF BARCELONA, SPAIN

In the **hospital** sector we are working for Horizon (a joint venture between FCC, Interserve and John Laing) on the competitive dialogue tender for design, construction, finance, operate and maintain a hospital in the city of **Liverpool (United Kingdom)**. Eptisa is responsible for the design of the structure and electrical and mechanical installations of the 89,000 m² building, which will have a capacity for 643 beds and 12 operating theatres. The project is being designed to meet the requirements for obtaining the BREE-AM excellent rating Certification. To do so, 10% of the hospital's total energy consumption must come from different renewable sources.

In Catalonia, Eptisa carried out the management of construction of the building that houses a *Health and Social Welfare Centre* and a car park located in the Les Corts District of Barcelona.

Eptisa was also contracted to carry out the integrated management of the construction of a complex of facilities for the Catalan Health Authority (CATSALUT) and the Auxilia Foundation with a total surface area of 5,739 m² which will house a Medical Centre, a Home for the Elderly and a Day Centre in Barcelona's Vía Augusta street. Furthermore, in the same city Eptisa carried out the works management with respect to the construction of a 2,621 m² mixed-purpose building which will serve as both a Medical Centre and a Nursery School in the Trinitat Vella district.

In Andalusia we worked for the Andalusian Health Service on a number of health centre and autonomous regional hospital redevelopment, refurbishment and construction projects.



>> **BASIC DESIGN OF THE IMDEA NETWORKS FOUNDATION BUILDING, SPAIN**

In 2010 we began working for the **R&D&I sector** with the design of the basic construction project for the *new headquarters of the IMDEA Networks Foundation* in the Leganes Science, Technology and Business Park outside Madrid. The design in question is for an innovative building of 7,716 m² characterised by its flexibility in the spaces organization as the design of all its elements is module based. The concept of the bioclimatic proposal lies in the buildings singular nature, orientation, relation with sunlight, etc. and in the use of eco-technological installations, making it very likely that the building will become a benchmark as regards sustainability.

For Spain's National Rail Operator RENFE we carried out the project management and quality control of the works to upgrade the *Data Processing Centres* of its IT building.

In the **commercial distribution** sector, in 2010 we managed both the design and the works of the *El Mirador Shopping Centre* in Las Palmas de Gran Canaria, which has an overall constructed surface area of 151,000 m².

Eptisa worked on the final design and authorisation projects of the premises housing the *Zippy children's fashion shops* and was contracted to project manage the construction of the following retail centres: Islazul in Madrid, Dolce Vita in A Coruña, Espacio Coruña in A Coruña, Nueva Condomina in Murcia, Thader in Murcia, La Vital in Gandia, Xanadú in Madrid and Gran Manzana de Alcobendas in Madrid.

With respect to the **energy** sector our work mainly entailed us offering our engineering services to the development of alternative energies. Eptisa prepared the tender design bidding contest to construct a *Waste-to-Energy Facility* in the northern Spanish region of Asturias.

Eptisa is providing a technical assistance for the supervision of the works of the *José Cabrera Nuclear Power Plant Decommissioning and Closure Project*, which has a pressurised water reactor (PWR). It is situated in the municipal district of Almonacid de Zorita in the Spanish province of Guadalajara and entered into operation in 1968 with an electricity generating capacity of 160 MWe. It is estimated that a total of 104,000 tonnes of materials will have to be processed and managed between now and the planned end of the project in 2014.

Outside Spain, Eptisa provided on-site technical assistance services for the construction of two *Solar Power Plants in Montalto di Castro* in **Italy**, with the first phase of the project being a 45 MW installation covering 170 hectares and the second phase a 9 MW unit spread over 22 hectares.



In **Bosnia Herzegovina** we are providing *Technical Assistance for the implementation of the Energy Community Treaty for South Eastern Europe*, with a particular focus on energy efficiency and renewable energies. In **Serbia** we are leading in the energy sector the EU-funded *Technical Assistance for the Promotion of Renewable Energy and Energy Efficiency*. Also in Serbia we are participating in the Preparation of the Technical Specifications and Tender Dossier, and in the Works Supervision for the Vranje and Leskovac Substations and Related Transmission lines.

>> **DESIGN AND CONSTRUCTION
MANAGEMENT OF A AIRBUS
PARTS MANUFACTURING PLANT
IN HARBIN, CHINA**

Regarding **instrumentation and monitoring** services for the construction process, Eptisa was contracted to carry out an ambient noise and structural vibrations study centred on the construction works of the new Barcelona Maritime Zoo and how these factors were affecting the nearby office buildings. This study confirmed that the works in question were not producing noise levels and/or vibrations in excess of those habitual to the area and that the buildings adjacent to the site were not being subjected to vibration levels which might affect their structural integrity.

Eptisa is one of the Spanish engineering companies which takes on projects that require us experience with respect to the design and managerial capabilities in the construction process in order to guarantee the client a strict commitment with the quality levels, deadline date and budget, originally stipulated



INDUSTRIAL BUILDING FOR HOUSING A POSTAL DISTRIBUTION PLANT IN THE SAN FERNANDO DE HENARES BUSINESS PARK, MADRID, SPAIN

<<

The project involves the construction of a 7,000 m² industrial building that includes 1,200 m² of office space for housing a postal distribution plant in San Fernando de Henares.

Eptisa's involvement in the project included preparing the basic design, the execution project and the health and safety study. We also acted as works supervisors and construction managers as well as coordinating the occupational health and safety procedures throughout the entire works period.



GOODS AND LOGISTICS PLATFORM IN MEDINA DEL CAMPO, VALLADOLID, SPAIN

<<

This project consists of the construction of a 14 metre high logistics platform covering a surface area of 16,000 m² for the distribution and storage of food products. The industrial building is equipped with a number of automated loading and unloading bays and technical offices.

Eptisa carried out the integrated management of both the design and construction, which included the basic and detailed design, works management and coordinating the health and safety procedures throughout the entire project. We also managed the complete construction of the project, which involved the preparation of tenders documents and contracts, controlling compliance with the design, costs and deadlines agreed upon and managing the certifications contracted.



“BALENCIAGA” MUSEUM IN GETARIA, GUIPÚZCOA, SPAIN

<<

This project involved the construction of the first museum completely dedicated to a haute couture fashion designer. The exhibition space is housed in two interconnected buildings, one of which is a new build adjoining the renovated Aldamar Palace. The museum also contains other spaces including classrooms and meeting rooms, a conference hall and a library. There is also an area that includes a cafeteria, a shop and a hall.

Eptisa designed the structure elements of the building; coordinated the architect and installations teams in the project. Eptisa redesigned and adapted solutions to make ensure economic viability, undertook the management of the Senior Architect and Technical Architect of the project as well as the supervision of the construction process.



REHABILITATION OF THE "NOVACAIXAGALICIA" HEADQUARTER OFFICE IN THE GRAN VÍA STREET, MADRID, SPAIN

>>

Eptisa provided the basic design and performed the initial administrative procedures for this project before carrying out the final structural and installations designs for the rehabilitation of the 5,200 m² building situated in Madrid's Gran Vía street. The building will be converted into the new headquarter of "Novacaixa-galicia" complete with social and office areas. Eptisa supervised the construction works.



CONVERSION OF BUILDINGS CONSTRUCTED FOR HOUSED PAVILIONS IN THE "EXPO ZARAGOZA 2008", SPAIN

>>

The first phase of this conversion project consisted of adapting structures built to house EXPO Zaragoza 2008 pavilions into a business park, with Eptisa as Project Manager. These works were executed during 2010.

The project management contract for the second phase, which began at the end of 2010, was also awarded to Eptisa by "Expo Zaragoza Empresarial". This involves the conversion of the buildings known as Actur 1 to 5 and Ebro 1, which housed international pavilions during the Expo 2008, for use as the Central Zaragoza Courthouse; this will bring all of the city's existing courts under one roof.



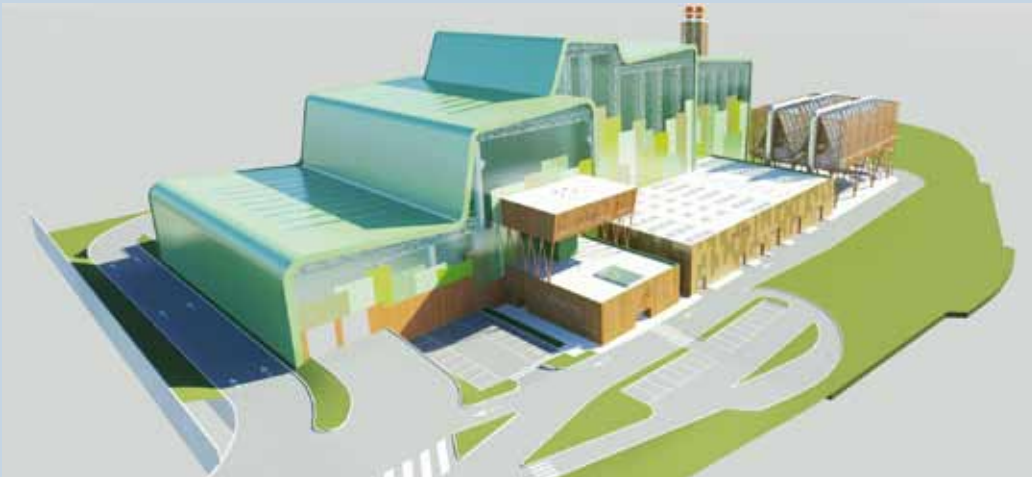
THE "MOLDOVA" EXHIBITION CENTRE IN IASI, ROMANIA

>>

As part of the project entitled "Management and Site Supervision for Works Financed under Phare 2005", Eptisa supervised the construction works of the "Moldova" Exhibition Centre situated in the municipal district of Iasi for the Romanian Ministry of Regional Development and Tourism.

Since it was completed in November 2010, the Moldova Exhibition Centre has been hailed as one of the country's most modern facilities. It consists of three enclosed pavilions with a total constructed surface area of 6,000 m² for holding events, trade fairs and exhibitions and a further 2,000 m² available for outdoor exhibitions as well as auxiliary spaces such as administrative offices, access points, car parks, etc.

The purpose of this contract was to develop a series of regional business infrastructures, improve market access and provide the information, services and technologies necessary for increasing commercial competition and creating a favourable environment for local and foreign investments in the region and the country as a whole.



TENDER DESIGN FOR A WASTE-TO-ENERGY FACILITY, SPAIN

>>

Eptisa has designed the tender project of a Waste-to-Energy Facility for processing 420,000 t/year of waste that will generate 63.1 kWt (33.22 kWe) of electrical energy. The Bidding process has been organised by COGERSA, Asturias Waste Management Company and the plan is to build the facility close to the Serín landfill site in Asturias.

The facility will be located on a plot measuring around 44,000 sqm and it will basically consist on the following areas: Waste unloading platform, Furnace-Boiler building with double incineration line, Flue Gas Treatment building;

half-dry system consisting on two depuration lines; Water-steam cycle and Energy generation unit, which consists on a main collector in which the live steam gathers and is pressurised before being taken off to the turbine. The live steam drives the turbine and it's transformed into electricity by a 36.8 MW three-phase alternator. Then there is the slag processing area: a conveyor belt system takes the slag to a 8,000 sqm storage area located outside the building. Other auxiliary installations foreseen for performing this process are: water demineralisation plant for feeding the boilers, a compressed air plant, an auxiliary liquid fuel system and a dry sludge.



RENFE DATA PROCESSING CENTRE (DPC), MADRID, SPAIN

>>

RENFE, Spain's National Railway Operator, commissioned Eptisa with the project management and quality control of the works to upgrade its Data Processing Centre located in its IT building in Madrid. The importance and critical nature of this type of centre requires a project management service to guarantee the uninterrupted operation of the IT systems which are so crucial to the smooth running of the majority of companies.



"EL MIRADOR" SHOPPING CENTRE IN LAS PALMAS DE GRAN CANARIA, CANARY ISLANDS, SPAIN

>>

This shopping centre and outdoor retail park, with a total constructed surface area of 151,000 m², has been built in the outlying district of Jinámar where the municipal district of Las Palmas de Gran Canaria meets that of Telde. In addition, more than 5 kilometres of public communications infrastructures have been constructed as well as link roads connecting the works to the GC-1 highway.

Eptisa was contracted as Project Manager, which entailed both works and project management as well as the planning of deadlines and investments, contracting and procurement management, managing and supervising the construction work and the control of schedules and costs.

I Quality and Industrial Safety

Eptisa is the most important inspection and quality Assurance Company for civil works, building and industry

Eptisa is the most important inspection and quality assurance company in the Spanish market, not only in civil works but also in buildings and industry. Our experience of over 50 years means that Eptisa offers added value in the Quality Assurance and Industrial Safety market, which our clients appreciate when we collaborate in all their projects.

The network of approved laboratories we have in Eptisa enables us to look after our clients' requirements both in Spain and in other European countries. Proof of this is the renewal for three years from the contract of the European Union and the Greek Ministry of Economy, Competitiveness and Shipping's as Specialized Consultant with the quality audits for projects and the corresponding laboratory tests.

As with the rest of Eptisa, in Quality and Industrial Safety there is a focus on developing new information technologies, making available to clients online links with which they can obtain information and test results in real time (Informeslab®), increasing process efficiency by being able to take decisions immediately with the help of the data obtained.

Our laboratories understand their activity as being a fundamental factor in the sustainable development of the society they serve, going beyond the mere technical aspects and getting actively involved in the social development, which has positioned them as a benchmark for the future of their sector and development of the infrastructures in the countries where we work.

In Quality and Industrial Safety the focus is on the development of new technologies to offer the client an online system for checking test results, making immediate decision taking easier with the help of the data obtained



ANTEQUERA ATHLETICS TRAINING ACADEMY, SPAIN

>>

The Athletics Training Academy in Malaga is a project that includes the construction of a covered athletics stadium as well as the tiered seating and canopy for the future municipal football pitch. It is a unique facility in Andalucía, the second in Spain and the tenth in the world, thanks to its hydraulic athletics track, which can be banked or kept horizontal according to the use required of the facility.

It has permanent capacity for 2000 spectators, which can be enlarged by a further 2000 by means of mobile tiered

seating. It is equipped with modern facilities, multi-purpose meeting and conference rooms, medical and anti-doping services, modern changing rooms, gymnasium, etc., as well as a cafeteria service and numerous public services.

The works carried out by Eptisa on the project consisted of the quality control of the construction materials and of the facilities.



VIADUCT AND NEW CABLE-STAYED BRIDGE OVER THE TAJO RIVER, SPAIN

<<

The project consisted of the construction of a viaduct and cable-stayed bridge over the Tajo River. The infrastructure is a 4300 metre long trunk with two carriageways with two lanes each. The access viaduct is 408 metres long. The cable-stayed bridge for the opening principal 318 metre light expanse is made up of a central pylon 184 metres high with a 22° inclination off the horizontal with a panoramic lift and 152 cables. The total platform area is 25,465 m². The project also includes five junctions with four newly created roundabouts.

The work carried out by Eptisa on the project consisted of the quality control of the construction materials.



MOTORWAY BYPASS OF TOLEDO, SPAIN

<<

The project consisted of building a motorway bypass 23 km long with two carriageways each with two lanes. The structures include 14 interchanges, 2 laybys, 2 underpasses, 3 viaducts and an overpass specifically designed for animals and 6 reinforced-floor walls. The viaduct is 315 metres high over the Tajo River.

The work carried out by Eptisa on this project consisted of technical assistance to the works management and the health and safety and environmental supervision.



PLATFORM FOR THE NORTH-NORTH EASTERN HIGH-SPEED RAILWAY VENTA DE BAÑOS-PALENCIA -LEÓN CORRIDOR, SPAIN

>>

The works for ADIF consisted of the construction of the platform for one section of high-speed railway line 10 km long between Valle del Retortillo and Pozo de Urama in the province of Palencia. There were 11 structures included in the construction and an overall execution budget of €41 million.

Eptisa's work consisted of technical assistance for the Construction Manager in the supervision and monitoring of the implementation and development of the contractor's quality control plan; monitoring and comparing the qualitative and geometrical control of the work; and quantitative control of the project once executed.



EXTENSION OF THE "ARENAL" DOCK AND CROSS DOCK IN PORT OF VIGO, SPAIN

<<

The work carried out by Eptisa on a floating pontoon on site consisted of rotary drilling twelve bore holes with continuous extraction of samples, rotary drilling four bore holes with sample extraction to identify dredging materials, perforation of four geotechnical bore holes with continuous sample extraction over the groyne being built, perforation of three bore holes with sample extraction on the "Arenal" dock to analyse typical existing filler materials. Together with taking laboratory samples and tests for geological and geotechnical tests, SPT compactness tests, pressure metre tests and Vane Test equipment tests.



ENVIRONMENTAL MONITORING ON THE WORKS TO IMPROVE THE OPERATING CAPACITY OF COMMERCIAL DOCKS OF THE PORT OF VIGO, SPAIN

>>

The work carried out by Eptisa consisted of checking that the works execution did not differ from the indications laid out in the environmental impact assessment, verifying compliance with corrective and protective measures and checking their efficiency. As well as detecting unforeseen disruptions and putting in place the measures necessary to prevent or correct them.



HIGH SPEED RAILWAY LINE MADRID-TORREJÓN DE VELASCO, SPAIN

<<

The project consisted of the construction of the railway platform on the Torrejón de Velasco section of the branches connecting the high speed railway Madrid-Levante line with the high speed Madrid-Seville line.

The work performed by Eptisa included geotechnical studies for structures and embankments foundation laying, as well as material quality control by testing floor surfaces and concrete mixes, pile auscultation and of mortar columns for embankment reinforcement.



CONSTRUCTION OF STATIONS IN LINE 9 OF THE BARCELONA SUBWAY, SPAIN

<<

Eptisa has conducted quality assurance of the architecture and facilities in the stations on line 9 of Barcelona subway on section 1. In total there were 13 stations and 11 ventilation shafts.

In addition, the functional test protocols were carried out in all the stations. The photograph is from the "Fira" station, designed by the architect Toyo Ito.



NEW RAILWAY ACCESS TO PORT OF BILBAO, SPAIN

<<

The project consisted of building a new railway access for goods traffic between Ortuella station and Port of Bilbao's new goods station, across Serantes hill, so as to improve the functionality of the sea-railway goods hub.

The total length of the section is 4830.26 m with a tunnel under Serantes hill 4000 m long (3650 m underground and 350 m above ground).

The work carried out by Eptisa on the project consisted of the quality control of the construction materials.



TUNNELLING WORK FOR THE EUSKOTREN BILBAO-DONOSTI RAILWAY LINE IN DURANGO, SPAIN

>>

The project is the expression in real terms of the Basque Government's Transport and Public Works' extension to their sustainable development policy, which will benefit railway users by eliminating level crossings and other architectural barriers, while restoring an extensive area for public enjoyment.

The length of the two-lane section is 8554 m, of which 8474 m are over ground, and 80 m in a tunnel. The project involves redesigning Euba station, eliminating two existing level crossings and substituting them with four overpasses and one underpass.

Eptisa's work on the project consisted of quality control of construction materials.



CONSTRUCTION OF A NEW BRIDGE OVER THE EBRO RIVER, SPAIN

>>

The works carried out consisted of the auscultation of the deformity of the bridge's piles and cables on the structure's central section during the hoisting process up from the surface of the river.

Altogether 20 extension gauges were installed at different points, with checking carried out 'in situ' and in real time of the record of unit deformities.

The new bridge is in the Deltebre–Sant Jaume d'Enveja section.



PLATFORM FOR THE NEW BASQUE COUNTRY RAILWAY NETWORK, SPAIN

>>

The work carried out by Eptisa on the project consisted of the quality control of the construction materials for the new railway line along the Bargara-Antzuola section.

The length of the section to be executed is 4289 metres, running over rough ground, with steep gradients and nar-

row valleys. These difficult orographical conditions mean that a large part of the section is inside the Kortatxo tunnel, over 3706 metres long, the longest to date in the Basque "Y". A viaduct will also be built over the Antzina River 164 metres long and a false tunnel of 157 metres in Egurribai.

I Information Technologies

The IT sector improved with respect to 2009 and grew moderately

Our Information Technology activity in 2010 represented 11% of our total turnover. This sector underwent public disinvestment throughout the year but proved itself to be agile enough to diversify its solutions in order to access new private markets. Our results make us confident that the sector will recover over the next few years. Investment in technology and innovation are crucial factors in ensuring that our economy enjoys sustained and sustainable future growth.

The Spanish Multi-Sector Association of Electronics, Information and Communication Technologies, Telecommunications and Digital Content Companies (AMETIC) announced that in 2010 the ICT sector maintained its turnover levels with respect to 2009. In a year of severe economic crisis such as 2010 the fact that the ICT sector's turnover remained unchanged may well be seen as a sign of growth in the future.

Geographic Information Systems

Geographic Information Systems manage the geo-referenced information, analyze its attributes and display the results on a map that aids the decision making.

As a consequence of our work with our partner, the technological leader ESRI Inc, ESRI Spain launched **ArcGIS 10**, a new and revolutionary version of its GIS product. This version enhances the user experience and provides greater functionality for creating mobile application and making Cloud GIS a reality.

The launch of the **ArcGIS.com** platform marked the before and after as regards GIS content. This geographic information social network is the meeting point for those professionals who want to share knowledge, solutions, data and services.

Another step in the same direction is that users can now incorporate contents from social networks such as Twitter, Facebook, etc. into the map. ArcGIS technology enables users to access and follow the information published in any social network via the map.

Our objective is to contribute towards the technological development of organisations by providing solutions that make their day-to-day work easier and enable them to take better decisions



>> GIS APPLICATION FOR MEDIA-POST, SPAIN

Throughout 2010 we continued to work on consolidating our partnerships with the world's principal IT companies. Our objective is to integrate the geographic variable and create **sector-specific applications** which represent real solutions to common business problems in different commercial sectors. The result of these efforts was the market launch of *ArcGIS for SharePoint*, *Business Analyst* and *Crime Analyst*.

In 2010 a new Enterprise Partner Program (EPN) was launched with the goal of making it easier for Esri's partners to internationalise their business. This program enables us to develop a joint strategy for technological and business areas with the main solutions and service providers worldwide.

Last year we organised and participated in a number of different **events** in order to promote our solutions. The most noteworthy of these was the *Esri Spain Users' Conference 2010*, which once again proved a great success with more than 1,800 people in attendance plus the presence of 11 partner companies and 78 client presentations.

In 2010 our **Training** department organised the first edition of a **GIS Masters** class aimed at training future professionals and increasing their chances of finding future job. The results obtained and the technical content have positioned it, in only its second year, into the benchmark Master's Course within the sector.

During 2010 the **public sector** in Spain suffered from stringent cuts in new applications and project funding, but despite this it continues to be our principal market. The corporate agreement is a solution which enables the acquisition of software and services at a fixed price. Therefore, we have won us the loyalty of our traditional client.

Along these lines we signed the maintenance and update of the framework agreement (Site Licence) with the *IT and Scientific Centre of Andalusia* (CICA) to provide mass access to ArcGIS software licences and added value services to all the Andalusian Universities. This contract is the extension of the first agreement signed in 1997 which has resulted in the distribution of more than 3,600 licences among the region's higher education centres.

ADIF (Spanish Railway Infrastructure Authority), in their *Corporate Information System Plan*, implemented ArcGIS as the standard solution for Geographical Information System application. This brings more coordination between the different departments for standardising applications, meeting new needs, saving on installation costs and defining an integrated corporate solution.

With respect to the **public safety** sector, in 2010 we developed the *iPOL Police Intelligence* software for the Police Department of the city of Madrid to improve security and public safety management within the Spanish capital.

In the **water sector**, the Madrid Water Company, *Canal de Isabel II*, awarded us the maintenance contract for all of its GIS and mobile applications for the next two years. In the same sector and in collaboration with a partner we installed a GIS for managing the supply and sanitation network for the company "Aguas del Puerto Municipal" of the city of Puerto Santa María in Andalusia, southern Spain.

In the **logistics** sector mention must be made of the second phase of the Corporate GIS project we are implementing for Correos, the Spanish Postal Service, which makes the GIS functionality available to mobile devices. In 2010 we also worked for Mediapost on a solution for optimising its direct mailing service and increasing advertising efficiency.

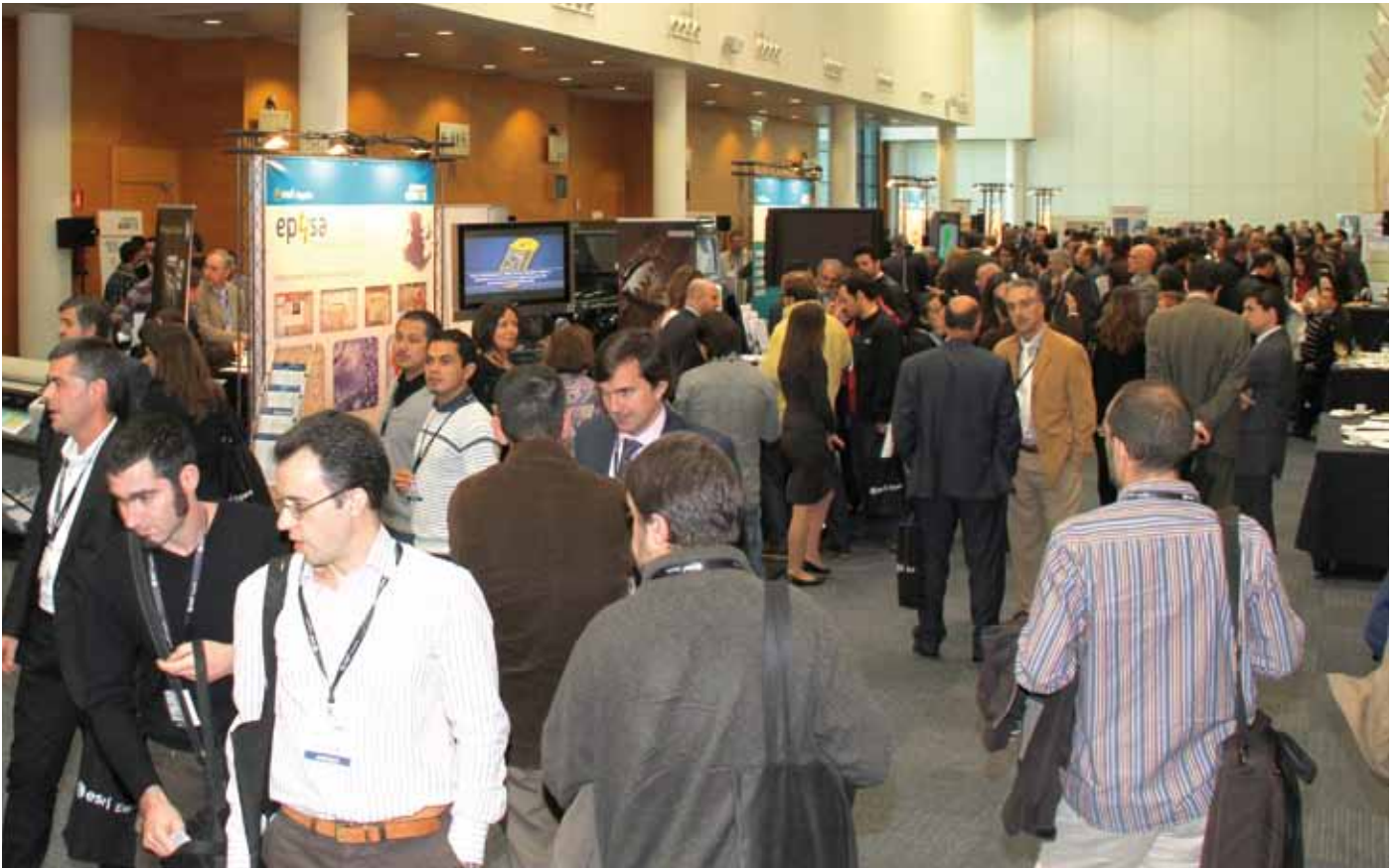
As regards **transport**, we completed the GIS application to maintenance and manage road network for the Government of Aragon Region. In the same vein, the company Cedinsa commissioned us to provide a GIS solution for the inventory and management of its assets within the kilometres of all the highways for which it has the maintenance concession.

Throughout 2010 we generated the street plan and postcode cartography of Spain, Andorra and Gibraltar.

As a result of the alliance with **Trimble**, leading provider of advanced positioning solutions, Eptisa has increased the range of its value added products for the GIS projects of our clients. In 2010, once again we achieved our objectives and we signed distributions agreements with the companies Telefónica and Tragsa.

IT Solutions: enterprise search and contents management

During 2010 we consolidated our alliances with Microsoft and Google in order to continue providing our clients with the best solutions. **Microsoft** awarded Eptisa its *Gold Partner* Certified classification, which is the result of our having met a long list of requirements, including being a specialist in document management (Search Competency and Portals



**>> ESRI USER CONFERENCE 2010,
SPAIN**

and Collaboration Competency) and we received 3 Microsoft Certified Professional citations and a similar number of other project references as well as easily exceeding the satisfaction levels demanded by our clients.

With our reputation as an expert in the Microsoft Fast search solution environment, Eptisa was awarded the contract to implement a project for *Unión Radio* which involved the installation of an automatic news item classifier.

Thanks to our close collaboration with **Google**, we designed a campaign for promoting Google Apps technology-based corporate solutions, currently the most powerful cloud computing alternative or SaaS (Software as a Service) on the market, among Spanish companies. Eptisa TI adapts these solutions to fit the client company's structure and meet its needs, irrespective of how big or small it is, as well as providing new added value services.

In Spain we continue to be the benchmark when it comes to the installation of both Intranet and Web search solutions. Our most high-profile projects in 2010 included: the Spanish Traffic Department, the Almaraz and Trillo Nuclear Power Plants and the Federated Search Engine of Spain's Ministry of Territorial Policy and Public Administration.

In 2010 Eptisa also signed an agreement with **EVER Team** regarding the distribution of the Ever Suite 4.2 solution. This is a complete document management system which is capable of managing corporate documents throughout their entire life cycle. It automatically files, manages, safeguards and distributes content, thereby guaranteeing traceability within a single document repository.

R&D&i

Throughout 2010 Esri continued to invest in R&D with the aim of making its clients' daily work easier by providing solutions that reduce the risks, costs and implementation times associated with their projects.

Likewise, we championed the generation of digital content based on the reuse of public and private contents, thereby making Eptisa an information intermediary providing added value.

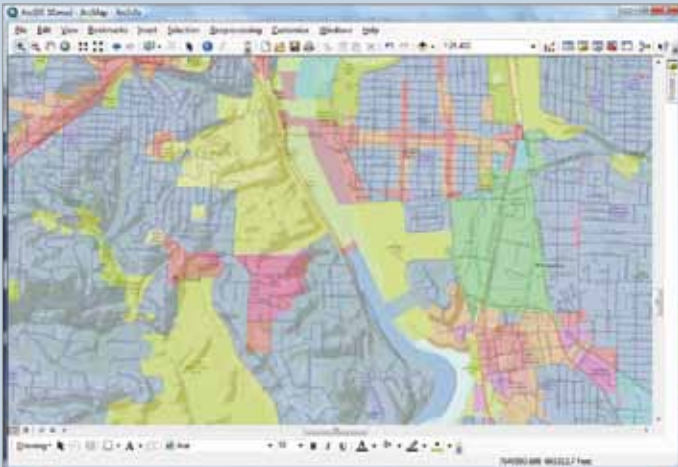
Specifically, our digital content solutions include geographic images and data together with socio-demographic and lifestyle information which serve as a lever to help clients to implement their GIS applications. During 2010 we incorporated more information both on a national and regional scale and, having created the appropriate model, we began to develop vertical solutions one of the most important of which is the one designed for Local Administrations.

At Eptisa innovation is seen as being a decisive development factor. In the information technologies area we implemented three R&D projects with the framework of Spanish Ministry of Industry, Tourism and Trade's Avanza Plan.

One of these projects is entitled TECAMIS and is aimed at providing technology for coordinating the agents involved in emergency situations. *TECAMIS +: Multi-agent Internet Technologies and Architectures via Services* sets out to improve the management of civil crisis situations such as fires, terrorist attacks, climatological catastrophes, etc.

Within the corporate search environment Eptisa is implementing an R&D project based on Geosearch and natural language recognition; the goal is to design and develop an integral corporate search tool.

With the aim of showing technology to be an instrument for social improvement, Eptisa is developing the *Gataca- Accessible Tourism Guide adapted to Castilla-La Mancha* in collaboration with In-nova, the International Innovation Programme, the Spanish National Paraplegic Hospital Foundation and the Spanish National Paraplegic Hospital. The project will enable people with impaired mobility to always know the best route to take when visiting points of interest such as museums, restaurants, leisure centres, parking spaces, etc., in accordance with their accessibility needs and other conditions of the terrain.



ARCGIS 10: THE NEW GIS ERA

>>

ArcGIS is a complete information system connected to departmental or corporate servers or cloud computing architectures which clients can access from their desktop, web browsers and mobile device.

Version 10 presents numerous new features that enable a better user experience. The new functionality increase the productivity make GIS application more powerful, and improve image processing tools. The new family enable new ways of sharing information and provide new mobility tools that simplify the deployment of GIS Mobile Applications possible thanks to ArcGIS Mobile, but over cloud GIS.

Cloud GIS is now a reality thanks to the use of ArcGIS Server in the Amazon EC2 environment, as well as to the use of ArcGIS Online from desktop applications, mobile clients or browsers. All this, combined with the launch of the ArcGIS.com platform as the new social network, which provides digital content to the GIS world.



FAST SOLUTION FOR THE AUTOMATIC GENERATION OF NEWS ITEMS, SPAIN

<<

The aim is to install a news classification system based on FAST technology which suggests the categories, the list of personalities and the subject to the documentalist. The project focuses on the automatic detection and guesswork carried out by the thesaurus system to which a certain news items pertains.

The system uses a classification method based on the probabilities retained from the documentation environment. It also relies on the support of a thesaurus and a who's who which enable the system to expand, learn and guess the category with which a certain news item is associated.



THE CEDINSA ASSETS MANAGEMENT AND MAINTENANCE SYS- TEM, SPAIN

<<

CEDINSA is a concession company whose activities are the maintenance of roads and currently manages 265 kilometres of highway.

Eptisa's developed a GIS tool that enables the geospatial management of the information for the roads assets inventory and maintenance. The solution includes the implementation of a corporate database for management and maintenance system.



IPOL SOLUTION - POLICE INTELLIGENCE, SPAIN

>>

Eptisa has developed the iPol-Police Intelligence Project for the Directorate of Security of the Madrid City Council. This is an innovative solution that combines the functionality of Geographical Information Systems with MetaCarta Geosearch technology.

iPOL browses those databases that might be of interest to the police and the information published in different digital communication media and other web-sites (online newspapers, blogs, forums, etc.) of interest to Police Intelligence and displays the results on a map of Madrid. The resulting package of geographical and alphanumeric information compiled by the application provides the Police with a complete security management system that helps them to anticipate crime.

The iPol project consists of a web application that is intuitive and user friendly, the cartographic system of the city of Madrid (SIGMA), MetaCarta, geographical content search technology and the ESRI geographical information systems for making the maps. Finally, iPol incorporates the Crime Analyst tool, which provides security managers with statistics capabilities of determining the crimes committed in the different districts and describing in detail the time of day or the day or days of the week at/on which they occur in order to obtain a broader vision of criminal activity that might be of help when taking preventive actions.

| Health

Casta Salud has consolidated its position as the largest private company in the mental health services

In a little over 7 years, we have become recognised as the largest private company in the mental health and psychogeriatrics services sector in Spain. Casta Salud currently manages a total of 4 centres and now offers 1000 beds.

In accordance with the objectives marked for 2010, this year we worked on the building up the two Centres open in the second half of 2009. We achieved the goals marked for CASTA Asturias and CASTA Guadarrama, obtaining the public administration contracts expected, and keeping up the other activities carried out in the Health care area.

CASTA Salud's management model is structured around a highly motivated team of qualified professionals and a high degree of commitment to achieving objectives. To this end, we use the synergies resulting from the relationships we have with Foundation and Universities around Spain, such as the Private University of Salamanca, the "Complutense University of Madrid", the "Tejerina" Foundation and the "Autónoma" University of Madrid. In 2010 we signed collaborative agreements for work training experience both at undergraduate and postgraduate levels (Psychology, Occupational Therapy, Speech Therapy, Nutrition & Diet, etc.) as well as conducting studies and reports connected to the various units' healthcare activity.

Our principal objective is to serve society by providing a highly professional and human service to family members and people with mental illness

RESIDENTIAL MANAGEMENT

>>Residencias Nostem

Once the two residential homes in Arrigorriaga and Balmaseda respectively were opened in July and September 2009, and thanks to which we now have a further 372 beds in the Basque Country. During 2010 we have renewed the agreements signed with the public administration BIDEAK to cover 80% of the total occupancy capacity.

Thanks to this, in Arrigorriaga 100% of public funded residential places are occupied, 100% of private ones are as well, while the daycare places have 60% occupancy. In Balmaseda 100% of public funded residential places are occupied, 60% of private ones are occupied, while the daycare places have 100% occupancy.

>> **CASTA SALUD**

>> Casta Asturias-Langreo

In 2010 we have succeeded in signing every single one of the contracts with regional governments. Thanks to this, by the end of year we reached a residential occupancy rate of 72% while the level of public funded places obtained over the year was 67%. In short, the number of places sold during the 2010 financial year will enable us to begin the 2011 financial year with the Centre's occupancy level at 80%.

The public institutions which have committed to reserving places are:

▶ ERA Psychogeriatrics places	45
▶ ERA Standard places:	25
▶ Social Welfare Department of Region of Madrid (Mental Health)	10

>> Casta Guadarrama

Throughout 2010, our objective was to guarantee public funding for the places we had planned. However, the current economic situation has had a major impact, since it has led to a major reduction in the Madrid regional government's budgets, with the result that public funding for places was not offered from the General Directorate for Mental Health. As a result of this cut, the occupancy rate at the end of the year was 40%.

On the other hand, as a result of our continued efforts, we have reached cooperative agreements and received commitments for the **funding of beds with the following public and private institutions:**

- ▶ AMTA: Agencia Madrileña Tutela de Adultos
- ▶ SESCAM: Castilla-La Mancha Health Service
- ▶ Foundations: Fundación Madrid, Fundación Familia, Fundación Manantial
- ▶ ADESLAS: Insurance company

>> Casta Arévalo

The Arévalo Centre has kept its **occupancy rate at over 90%** all year and renewed its contracts with the public administration and insurance companies. Working with the universities in the region has borne training programmes in psychology, occupational therapy and speech therapy. Likewise, it has opened up the possibility of grants for specialised courses and Master degrees.

>> Casta Fontiveros

The Fontiveros Centre has kept its **occupancy rate at over 90%** all year and renewed its contracts with the public administration.

>> Pharmacy Unit

Within the specialised Health consultancy area, in 2010 we developed the **contract for managing the supply programme of Methadone Chlorhydrate**, under the terms of which CASTA Salud manages the production, preparation and prescription of this substance.

Through this project, our health team has managed Drug-dependency Care Centres (CAD), establishing the quality assurance standards to apply for their day-to-day operations.

Key data this year are as follows:

▶ N° of doses administered	546,903
▶ N° of visits by pharmacists to centres	276
▶ N° of methadone distributions	815
▶ N° of patients seen	3.650

<< CASTA ASTURIAS-LANGREO



<< CASTA GUADARRAMA



<< CASTA ARÉVALO



>> FACILITIES AND THERAPIES



TRAINING

Continuous training and development of improvement plans for our teams of professionals is one of the main priorities and values which have positioned Casta as the largest private company in the mental health sector.

COURSE	Nº HOURS
Humour management in the work environment (laughter therapy)	20
UNED Course: Human Resources in Nursing	annual
UNED Course: Organization & Management of Geriatric Centres & Residential Centres	annual
Course on Cognitive/Behavioural Therapy in Mental Health	15
Mechanical Restraint I & II Course	40
Social Work in Mental Health	20
Food Handling course	8
Workplace risk prevention course	5
Course on entertainment for dependent people	30
Emergency and first aid course	20
Basic IT course	20
Course for supporting the integration & settling in to institutions of dependent persons	30

<< AS PART OF THE CONTINUOUS TRAINING PLAN, THE FOLLOWING TRAINING COURSES HAVE BEEN GIVEN DURING 2010:

GRANTS

In Casta we have agreements with Universities for training plans and grants:

- ▶ **2 annual grants**, assigned to the postgraduate programme, for Occupational Therapy with the University of Salamanca.
- ▶ **2 annual grants**, assigned to the postgraduate Psychology programme, with the University of Salamanca.
- ▶ **1 annual grant**, assigned to the postgraduate Speech Therapy programme, with the University of Salamanca.
- ▶ **2 grants**, assigned to the postgraduate Psychology programme, with the University of Madrid.
- ▶ **2 grants**, assigned to the postgraduate Occupational Therapy programme, with the Complutense University of Madrid
- ▶ **2 grants**, assigned to the Nutrition programme, with the University of Madrid.

PUBLICATIONS

Over the course of 2010 a group of professionals from the Pharmacy Unit and Guadarrama Centre worked on a technical paper, which we hope to publish during 2011. It includes a detailed study based in clinical cases, of how methadone treatments affect people with mental illness.

CONGRESSES AND SCIENTIFIC PAPERS

During 2010 we organised seminars and workshops to share experiences, best practices and knowledge among all qualified personnel.

We would like to highlight the **VI International and Inter-university Seminar on Biomedicine and Human Rights** held on 24th and 25th June 2010 in Madrid, of which we were sponsors and took part in the round table on *“Mental & Social Health in the context of the Crisis and Companies”*.

We also took part in the **XXXVII National Seminar on Society, Drugs & Alcohol** in Oviedo between 22nd and 24th April, where we presented our poster on *“Distribution of patients in Methadone dispensing Mobile Units categorised by dosage and collection frequency”*.

In the **XII National Seminar on Dual Pathology** in Madrid from 6th to 8th May, in which we presented our poster: *“Periods of time that methadone patients stay in the Dual Pathology Unit of “Nuestra Señora de la Paz” (Madrid) Hospital between 2005 and 2009”*.

>> **VI INTERNATIONAL AND INTER-UNIVERSITY SEMINAR ON BIOMEDICINE AND HUMAN RIGHTS**

From 30th April to 2nd May the **X National Clinical Chemistry Congress** took place, where the following poster was presented: *“Comparative analysis between the dispensation of Methadone Chlorohydrate as solution or tablets”*.



I Eptisa Worldwide

In 2010 our annual growth of over 25% continued, thanks to intense new project creation and the consolidation of international offices in their local markets

Eptisa continued its growth outside Spain during 2010 thanks to the new contracting and its corresponding increase in the client portfolio. This new acquisitions represented a 50% increase as compared with the previous year. Thus, today the international business takes over 58% of the group's backlog as a whole.

Our strong international expansion is the result of the consolidation of our international development plan developed between 2006 and 2010. This gives us the experience and confidence to lead the next phase for the 2011-2014's period.

Also, these growth rates represent our customers' positive response to the strategies followed by Eptisa's offices abroad. They have delivered high quality services, placing a significant effort in balancing local and international resources, adapting to the local environment, and optimising resources. In addition, our Units have continued the diversification of clients and sectors in their markets.

In 2010, as a result of the economic crisis, a large number of countries have suffered severe public deficits, causing heavy divestiture on the part of public administrations in infrastructure. In order to maintain the development of their countries' infrastructures, governments have adopted public-private (PPP) models, which are causing a change of mindset in the sector, forcing engineering companies to take an active role in the consortia of large worldwide infrastructures.

In this context, international tenders have been concentrated in Europe, particularly Eastern European countries, Asia and the United States, although not to the degree promised in the political commitments announced as part of the solutions to the crisis.

Eptisa has improved its competitive edge, keeping a close partnership with our clients, learning from them, transferring know-how and exploiting the knowledge gained from successfully completed projects.

We increased
our international
presence from 32
countries to 38 in
just one year

Thanks to the new contracted projects financed by the European Commission, the World Bank, the Asian Development Bank, and other multilateral financial institutions, Eptisa has become a leading actor in the IFIs market. In short, during 2010 Eptisa moved from 7th to 4th place in the ranking of European companies (from over 19,000 bidding consortia) and held on to its leadership in the efficiency of its commercial investment.

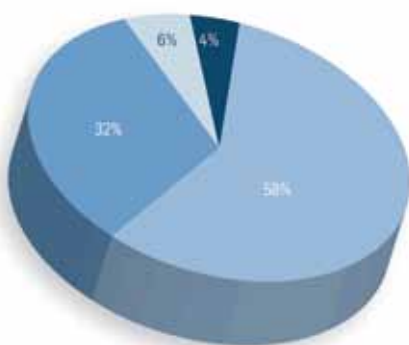
We must highlight Eptisa's participation in the major international transport and water infrastructure projects being carried out in Eastern Europe, Portugal and the United States, both in local tenders and in joint ventures with Spanish construction and concession-holding companies.

In the development cooperation sector, the European Union again entrusted Eptisa with monitoring its projects in Latin America, Cuba, the Caribbean and the Pacific, and extended its commission to include the Africa Region into the monitoring system managed by Eptisa.

Keys to our international development results are our technical expertise, our management capacity and a focused strategy.

Important strategic decisions were taken during 2010 such as the Eptisa's move to Haiti to take part in the reconstruction of the country, as well as our increased focus on Asian markets, with activities in Vietnam, India and China.

>> INTERNATIONAL ACTIVITY



Spain	58%
Europe	32%
America	6%
Africa and Asia	4%

>> KEY FIGURES IN OUR INTERNATIONAL ACTIVITY:

500 qualified professional involved in international projects

International activity in **38** countries

A **98.5%** of success, considering implementation and payment, in our international projects

28% average annual growth in the 2006-2010 period



EUROPEAN MUNICIPAL INFRASTRUCTURE SUPPORT PROGRAMME IN SERBIA

<<

The EU-financed programme has two main aims: firstly to provide technical support to Serbian municipalities in the planning and rollout of municipal infrastructure projects and secondly, to supply legal and technical support to encourage the concession of certain municipal services through Public-Private Partnerships.

Thanks to this contract, the Eptisa team is conducting several feasibility and environmental impact studies for the construction of municipal landfills, wastewater treatment plants and water supply networks and drinking water treatment plants. Eptisa is also conducting the works supervision of several water and sanitation infrastructure constructions and, finally, is supplying technical support to encourage improvements in the management of public municipal service companies.



DESIGN AND WORKS SUPERVISION OF THE ETILER POLICE ACADEMY AND 40 SCHOOLS IN THE CITY OF ISTANBUL, TURKEY

<<

The purpose of this project is to rebuild and strengthen the structures of 40 schools in the city of Istanbul and rebuild the current residential quarters of the Etiler Police Academy to extend their capacity and earthquake resistance.

Eptisa is carrying out the design and works supervision for all the infrastructures, which in total take up an area of about 270,000 m², for the contracting authority "Istanbul Project Co-ordination Unit (IPCU)", part of the Istanbul's Regional Government.

WASTE GOVERNANCE WITHIN THE COUNTRIES OF THE EUROPEAN NEIGHBOURHOOD AND PARTNERSHIP REGION (ENPI EAST)

>>

This project is one of the main components of the Regional Indicative Programme for the eastern area of Europe within the European Commission's 2007-2010 ENPI (European Neighbourhood and Partnership Instrument).

The Programme's principal objective in the environmental and forestry sphere is to reduce pollution risks resulting from inappropriate management of solid waste in the six countries in the area of action: Azerbaijan, Armenia, Belarus, Georgia, Moldova, Russia and Ukraine.

The work includes carrying out the inventory of illegal landfills existing in the pilot region; a proposal for classifying waste in compliance with the EU's international standards; writing the waste management strategies for the next 15 years for each of the targeted cities and the urban areas around them; as well as feasibility studies for establishing a 'DABLAS-type platform (Danube-Black Sea Task Force)' to encourage strategic investments in waste management.



TECHNICAL ASSISTANCE FOR THE IMPLEMENTATION OF THE ENERGY COMMUNITY TREATY FOR SOUTH-EASTERN EUROPE, WITH A PARTICULAR FOCUS ON ENERGY EFFICIENCY AND RENEWABLE ENERGIES

>>

The project's main purpose is to supply technical and legal support for reforming the energy sector by creating an energy market on a national scale that is integrated both within the region and within the European Union, in line with EU Patrimony relating to energy efficiency, renewable energies and sustainable energy.

A multidisciplinary team of Eptisa experts is working on the design and implementation of pilot projects to promote renewable energies and energy efficiency measures in a select group of municipalities throughout Bosnia Herzegovina. They are also providing models that can be implemented and replicated in other towns and to achieve greater awareness among the Bosnian population of the many advantages of applying energy efficiency measures and clean energy generation.



Europe



Over the year, Eptisa has consolidated its traditional markets and permanent offices in local markets, as well as entering into new markets and countries.

Eptisa is currently acknowledged as one of the major engineering and consultancy service providers in Europe. Our leadership has been assured by the growth of programmes financed by the European Commission.

Greece >>

Thanks to the successful job done to date in Greece, the Ministry of Economy, Competitiveness and Shipping has awarded Eptisa a new contract in the E.S.P.E.L. project: “*Specialized Consultant for Quality Control*” financed by the European Union to continue for another three years the projects that it has been carrying out in the country in this specialist field.

From our four offices in Athens, Ioannina, Larisa and Xanthi, we conduct the auditing and quality control of the work in the projects co-financed with European funds, and the task of institutional assistance to the client and the Ministry of the Environment, Physical Planning and Public Works in the process of improving works supervision and quality procedures. We also have one of the best civil engineering laboratories in the Balkans for carrying out the necessary controls and contrasts tests.

Most of the auditing and quality assurance work carried out is in the transport area, specifically motorway,

railway, metro, port and airport construction or enlargement. We also work in the areas of environment and urban planning, among which we can highlight the project for maintaining and refurbishing 34 sculptures located in public areas in the city of Athens to emphasise their cultural and urban value, as well as the illumination of the ancient aqueduct in the city of Kavala. ||

Portugal >>

In the **Water** sector, for Iberdrola we have carried out the *Detailed Design for the Construction of Hydroelectric Plant at Gouvães and Padroselos*, which are located in the basin of the Tâmega River.

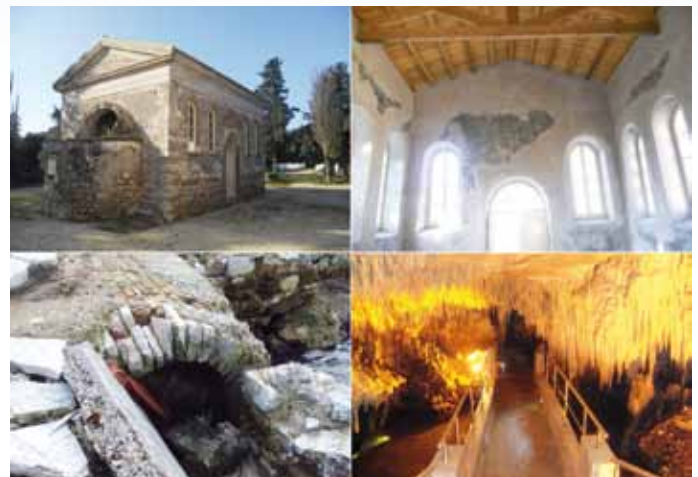
In 2010, also in the hydraulic infrastructure area, Endesa awarded us the *Detailed Design for the Hydroelectric Plant of Girabolhos*.

In **Roadways** we have worked for the ACE Rodovias do Algarve Litoral Group (Edifer, Dragados, Tecnovia,

Conduril), holders of the Algarve Coastal Highway concession, with the consortium carrying out the detailed design for the construction for the road system, which includes both building the roadways for the new section and refurbishing existing ones. ||

Eptisa confirms its place as the leading foreign capital engineering and consultancy firm in the Western Balkans

>> SPECIALIZED CONSULTANT FOR QUALITY CONTROL PROJECT, GREECE



The Western Balkans

With sixteen newly signed contracts covering a wide range of technical disciplines, from transport engineering to environmental infrastructure, and from energy to general public administration reform, 2010 has been a very positive year for the consolidation of the Regional Office of Eptisa in the Western Balkans. In addition to the new contracts, the implementation of six projects was completed with a remarkable success.

Serbia >>

In the **Water and Environment** area, Eptisa continued providing expertise as the leading company in the *Municipal Infrastructure Support Programme in Serbia*, a 9.5 million Euro technical assistance financed by the European Union. Here a team of experts of Eptisa is giving technical advice during the preparation of feasibility studies and environmental impact assessments for the construction of sanitary landfills, water and wastewater treatment plants, and water supply networks. As part of this contract Eptisa is also supervising the construction works of several water and sanitation infrastructures. Last but not least, the expert team offered advice for the enhancement of the technical and financial management of several municipal public utility companies.

It is also worth to highlight the *Feasibility Study and Environmental Impact Assessment for the Construction of the Kolubara District Regional Landfill* that we successfully undertook in 2010. The project was financed by the Kingdom of Spain and aimed

to make its contribution to the overall compliance with the National Waste Management Strategy. The new landfill will service a population of 44,000 inhabitants along 11 municipalities in the region of Valjevo.

Also in the field of waste management, Eptisa is currently providing technical assistance to the Ministry of Environment and Spatial Planning for the preparation of a feasibility study, detailed design and tender dossiers for the construction of the first *Hazardous Waste Management Facility* in the country.

Furthermore, and since the end of 2010, a multidisciplinary team of experts from Eptisa is assisting the Water Directorate of the Republic of Serbia in the preparation of the *Sewerage and Wastewater Master Plan for the Region of the West Morava River Basin*. Within this assignment, we will also prepare a set of tender

documents for the construction of a wastewater treatment plant.

Also in the field of **Water Resources Management**, Eptisa is the leading company in a project financed by the EU that aims to prepare the *Flood Risk Maps and Flood Hazard Maps* for certain river basins. The set of maps will be based on GIS technologies in order to facilitate their easy integration into the national Water Management Information System, also created by a consortium led by Eptisa as part of another EU-financed project. The maps of the flood prone areas will become part of the urban and spatial plans, working as a management tool for both flood protection and spatial planning.

In the **Transport** sector one of the most important contract awards for Eptisa was the World Bank-funded *Construction Supervision of the Highway E-80, Prosek - Dimitrovgrad*, part

<< **WORKS SUPERVISION AND QUALITY CONTROL FOR THE BUILDING OF THE E-80 HIGHWAY IN SERBIA**





>> TECHNICAL ASSISTANCE IN PREPARING THE FLOOD RISK MAPS AND HAZARD MAPS FOR SERBIA

of the Pan-European Corridor X. Over the next four years, Eptisa will be supervising the works done by several international contractors who will be working in nine segments of this road section connecting Serbia with Bulgaria. The new highway will be 60 kilometres long and will have 43 bridges and viaducts, 4 tunnels and 3 interchanges.

In the **Energy** sector Eptisa is leading the EU-funded *Technical Assistance for the Promotion of Renewable Energy and Energy Efficiency*. Its main objective is to contribute to the sustainable development of the country by improving the capacities of the energy-related public institutions, leading to a more efficient use of the renewable energy sources in compliance with the EU standards and with the international protocols and treaties signed by Serbia. In addition to this, we are participating in the *Preparation of the Technical Specifica-*

tions and Tender Dossier, and in the Works Supervision for the Vranje and Leskovac Substations and Related Transmission Lines.

In the **Social and Public Administration Reform** sectors, we are leading the project *Supporting Access to Rights, Employment and Livelihood Enhancement of Refugees and Internally Displaced Persons in Serbia*. The objective of this intervention is to improve the capacities of refugees and displaced persons to obtain long-lasting employment opportunities. In order to achieve this, a team of experts from Eptisa carried out the design, management and implementation of a grants scheme for social inclusion.

Finally, Eptisa is part of an international consortium that is implementing a project that offers support to the Government of Serbia in the development of its administrative and technical capacities in the area of EU funds management and in the process towards the total decentralization of all the future EU assistance. ||

FYR of Macedonia>>

During 2010 we successfully finalised the *Technical Assistance for the Preparation of the Design and Tender Documents for the Sewerage Network Rehabilitation and for the Construction of a Wastewater Treatment Plant* in the town of Pilep.

In the **Transport** sector Eptisa is working in the preparation of the *Feasibility Study for the Eastern Section of the Pan-European Railway Corridor VIII*, financed by the European Bank

for Reconstruction and Development (EBRD). Here, a multidisciplinary team of experts provide technical support to the Ministry of Transport and Communications in conducting an economic and financial analysis of the various alignment alternatives. The team is also assessing the environmental and social impacts and will undertake the conceptual design for the selected solution. ||

Croatia >>

Thanks to two newly awarded contracts during the last year, Eptisa succeeded to position itself as a benchmark company in the **Water and Environmental Engineering** sectors. The first contract is in the Primorsko-Goranska County, where Eptisa is managing a public relations – public awareness campaign for the construction of the Marišćina sanitary landfill. The objective of this campaign is to increase the public opinion's support about the need to build the new Waste Management Centre and the advantages that this will bring to the population.

The second assignment is the *Supervision of Works for the Construction of the Water Supply and Sewerage System and Wastewater Treatment Plant in Slavonski Brod*, where Eptisa is acting as the Engineer following FIDIC Conditions of Contract.

Also during 2010 Eptisa finalised the implementation of a technical assistance to the Croatian administration for the preparation of infrastructure projects funded by the Pre-Accession Funds and for ensuring the timely and efficient management of projects to be funded through the future Structural and Cohesion Funds. ||

Bosnia and Herzegovina >>

During 2010 and in the **Energy** sector we were awarded with the contract "Technical Assistance for the Implementation of the Energy Community Treaty for South-Eastern Europe, with a Particular Focus on Energy Efficiency and Renewable Energies", entirely financed by the EU Instrument for Pre-Accession. Thanks to this contract, a team of experts from Eptisa are intensively working on addressing the policy and legal gaps for energy efficiency and renewable energy in Bosnia and Herzegovina by supporting the implementation of pilot measures and capacity building at a local level (within specific municipalities), providing models for implementation and replication in other municipalities and raising awareness about the potential for practical implementation of energy efficiency and renewable energy measures at all levels.

At the same time, Eptisa is also participating as a partner in the *Technical Assistance for Capacity Building to Promote Exports and to Develop the Export Base*. The ultimate objective of the project is to improve Bosnia and Herzegovina's balance of trade by strengthening the sustainability of export development and promotion institutions and, eventually, by increasing exports.||

Albania >>

During the past year we continued working in Albania in a contract fi-

nanced by the EU-IPA Programme in which we undertake the supervision for the construction of the sewerage systems in Velipoja and Shkodra. The concerned components of the IPA measure include the construction of a new sewerage system and a wastewater treatment plant in the city of Velipoja and a new sewerage system in the industrial area of Shkoder, in the north-west of Albania.||

Kosovo (under UN 1244) >>

During 2010 Eptisa has participated in six important contracts in Kosovo. First of all, and in the field of **institutional strengthening**, we are providing support to different municipalities in order to advance in their reforms and to enhance their capacities in the context of the current decentralisation process. Also, and this time as part of a World Bank-funded project, our experts provided support to the Kosovo Chamber of Commerce and to the Association of Municipalities for the establishment of a network of Municipal Business Centres, achieving a simplification of all the paperwork required to set up new companies.

Eptisa has also coordinated a project aimed to strengthening the institutional capacity of the Ministry of Energy and Mining in the planning and setting up of their energy strategy. In addition to this, our experts provided technical support to the Ministry of Health with the aim of improving the

overall Kosovo health system. This intervention had a very important impact on the health status and health reforms in Kosovo, as it referred both to the needs for improving the capacities of Kosovo's Health Sector and Health Information System, and the needs for cooperation between the municipalities of Kosovo, donors and other institutions interested in financing health related measures.

Moreover, we continued with the implementation of a project to improve the social and economic infrastructure in Kosovo, providing all kinds of engineering services for the development of socio-economic infrastructure in several municipalities.

Last but not least, in the **Environment** sector, we were awarded with a new project in which we provide

>> OPENING CEREMONY OF THE GAP REGION FLOODING RISK PROJECT, TURKEY



technical support for the *Preparation of the Environmental Strategy and Environmental Action Plan*, facilitating the alignment with the relevant EU standards and international conventions in the field of environment.||

Turkey >>

This was a year of consolidation and transition in Turkey, influenced by the calendar of projects financed by the EU. In this context, Eptisa has concentrated its efforts on the management of projects underway, principally in the **Water and Solid Waste** sectors.

We have successfully completed the *Technical Assistance to mitigate flood risk in flooded areas in the GAP region (South-Eastern Anatolia)*. This project has two components. The first is to train the stakeholders' staff of the regional administrations of the 9 provinces in how to roll out an appro-

priate territorial planning and investment policy, and the Social Support programme.

The second component consists of institutional strengthening for the sustainable management of flooding risk as well as the appropriate management of natural disasters, which includes a pilot project.

The recognition of the good work done by the company and the optimum results obtained were very plain to see during the opening ceremony; this took place in the city of Şanlıurfa and was attended by the highest authorities from the European Union's delegation in Turkey, the Contracting Authority, as well as regional and local political personalities. The EU delegation encourages this type of event in those projects it considers significant, as examples of good practice on the part of the companies carrying out the projects financed from EU funds

which fulfil the aim of contributing to Turkey's development through implementing EU-harmonising policies.

We are currently immersed in the *Design and Reconstruction Supervision of 40 schools in the city of Istanbul, for the "Istanbul Project Coordination Unit (IPCU)" part of Istanbul's regional government*.

In addition, thanks to its geo-strategic location close to the countries in Central Asia and the Caucasus, the "Surkhandarya Water Supply and Sanitation Project" in Uzbekistan, which began in April 2010, is being run out of Ankara, amongst others.||

<< TECHNICAL ASSISTANCE TO MITIGATE FLOOD RISK IN FLOODED AREAS IN THE GAP REGION, TURKEY





In 2010, Eptisa consolidated its leadership in the water sector in the Romanian market

Romania >>

Since its establishment in Romania, Eptisa has had 50 projects in the **Water and Environment** sectors, principally hydraulic infrastructures and institutional strengthening. Building, Industry and Transport complete the list of service areas. Eptisa has grown in Romania over the last few years thanks to the company's activity and dynamism.

In 2010, Eptisa continued the implementation of eighteen projects in total, of which we can highlight the twelve in the Water sector, two Turnkey projects, one in Solid Waste Management, one in Civil Construction and another two covering several purposes such as civil construction, transport, restoration of historic monuments and civil infrastructure.

Over the year, as a result of our management in projects financed by the EU, we were awarded the continuation phase of two of the most important projects ever conducted in Romania with European funds. The

first one is to complete the technical assistance for the implementation of the works contracts for improvement of the drinking water and wastewater systems for complying with the European standards in the field of water quality and environment protection in Iasi city. The second project is *Management and site supervision for works financed under PHARE 2005* in which Eptisa has provided project management support to the local municipalities for the implementation of ten works contracts.

In 2010, in the **Water** sector mention should be made of the start of the first *Turnkey project* in Romania in which, with Aqualia, we are implementing the complete cycle, from the construction design to the works execution for the refurbishing tasks in the *Zimnicea WWTP*. The project will result in a better quality of wastewater discharge into the Danube River, thus improving the cross-border environmental impact.

The award of the second *Turnkey project* for improving environmental

quality and life standards of the population from Agnita and Dumbrăveni regions, in the Sibiu County, has confirmed us as a benchmark company for this type of project. There are currently no treatment facilities in these two regions, so the project includes the design and construction of new plants in accordance with the EU directives for environmental protection. The main objective is to improve water quality, proper sludge management, as well as of the delivering affordable sewer services. The Turnkey project, also conducted together with Aqualia, includes both design and execution of two *WWTPs in the localities of Agnita and Dumbrăveni*.

During 2010 the regional water company in the Suceava County awarded us a second project: *Technical Assistance for the preparation of the Cohesion Fund Application, and the works supervision for the upgrading of the Water and Wastewater infrastructure in Suceava County*. This is the second project for the same client that we have developed in parallel with another earlier one. The aim is to help the organization to identify and develop new projects in the water and wastewater field, guaranteeing financing from the European Union and fund management, as well as providing supervision services for

1 >> LANDFILL CONSTRUCTION IN ÇANAKKALE, TURKEY

2 >> DESIGN AND WORKS SUPERVISION OF THE ETILER POLICE ACADEMY AND 40 SCHOOLS IN THE CITY OF ISTANBUL, TURKEY

the ten works contracts for the rehabilitation, extension and construction of infrastructures. Eptisa will also be responsible for the elaboration and implementation of the strategies necessary for compliance with the aims and requirements of the EU's environmental protection programme Acquis, such as sludge elimination, assets management, catchment's pollution prevention, long term infiltration reduction and leakage detection, in order to comply with the management procedure for the drinking and waste water systems at county level.

Another excellent result from Eptisa's activity in Romania in 2010 was the award of the project *Technical Assistance for the supervision of works for the enlargement and modernisation of the water and wastewater infrastructure in the Bistrita-Năsăud County*. For this project, our services consist of supervising the seven works contracts for the enlargement and modernisation of the water and wastewater infrastructure in the Bistrita-Năsăud County and compliance with the Sectorial Operational Program (SOP) Environment require-

ments and with European Directives on drinking water.

In conclusion, since year 2000 we have worked with ten regional water operators all over the country, both design as well supervision and Project Management of water and wastewater infrastructure projects. Most of them financed with EU funding, which positions us as one of the most important water engineering companies in Romania. Specifically in 2010, Eptisa was top of the Romanian market ranking.

Bulgaria >>

In 2010 Eptisa has succeeded not only in maintaining but also reinforcing its position in the water and environmental sector in Bulgaria, as well as identifying new projects in the transport area that could get financing from EU funds.

In the **Water** sector in 2010 we have continued working on the *Works supervision for the integrated water cycle for the city of Sliven project*. The services consist of works supervision

for 26 km for the sewerage network and 44 km for the water supply, implementing the project in compliance with the FIDIC Red Book standards.

Furthermore, Eptisa won the project for the *CEP (Creditworthiness Enhancement Program) for the Water and Wastewater Treatment sector* for the city of Burgas, co-financed by the European Bank for Reconstruction and Development and the EU. The Creditworthiness Enhancement Program in the water infrastructure sector has an integrated vision of municipal capital and financial issues, and provides a method for improving coordination between these areas. Once implemented, it will improve financial and capital budgeting management, as well as creditworthiness and thus increase the capacity for accessing financing and future investment in infrastructure for water and sewerage.

The activities in 2010 have consisted of carrying out a financial and capital investments plan, debt and treasury management, budget management and the presentation of financial

1 >> TECHNICAL ASSISTANCE FOR THE IMPROVEMENT OF WATER INFRASTRUCTURES IN SUCEAVA COUNTY, ROMANIA

2 >> TECHNICAL ASSISTANCE IN WORKS SUPERVISION FOR THE EXTENSION AND MODERNISATION OF WATER INFRASTRUCTURES IN BISTRITA-NĂSĂUD, ROMANIA





reports, property and asset management, and preparing the project for its subsequent implementation.

Former Soviet Union (NIS countries) >>

2010 saw the consolidation of Eptisa's presence in the region with three major regional projects in the **Water and Environment** sector. The first is the regional Trans-boundary river management for the Kura River affecting **Georgia, Azerbaijan and Armenia**, which continues to run with very positive results and the active participation of the three governments involved.

The second project, *Waste governance within the countries of the European Neighbourhood and Partnership Region (ENPI East)*, is one of the main components of the Regional Indicative Programme for the eastern part of Europe. The objective is to reduce the risks of pollution arising from inappropriate management of solid waste in **Azerbaijan, Armenia, Belarus, Georgia, Moldova, Russia and Ukraine** along six functional lines: Project Management; inventory of the illegal landfills; strengthening of waste classification practices; development of regional

pilot strategies for waste management; feasibility studies to establish the "DABLAS-type" platform; and awareness, information and training of society.

The third project, *Programme for the prevention, preparedness and response to man-made and natural disasters in the ENPI East region (PPRD- East)* consolidates EPTISA's presence in the environmental field in the region and most of all, it opens a new market for our company in the field of the Civil Protection Mechanisms in six countries (Armenia, Azerbaijan, Georgia, Belarus, Moldova and Ukraine). The programme will focus on: Seismic risks; Hydro-geological events; Forest and ground fires; Chemical disasters: explosions, fires, chemical accidents or toxic gas leakage, obsolete pesticides, road accidents; and Disasters caused by extreme meteorological conditions. The program includes three sets of actions, which will result in: i) an improved knowledge base concerning the current state of play, creating an Electronic Regional Risk Atlas ii) strengthened prevention, preparedness capacities and response, developing a Civil protection manual, and iii) wider information and awareness. These actions must also work towards the greater goal of a pro-

gressively stronger association of the Partner Countries with the European Mechanism of Civil Protection.

In **Georgia** in the **Water** sector, Eptisa is conducting the *Design, Development and Implementation of a Web Based Geographic Information System with data on water supply and sanitation infrastructure network* in the cities of Kutaisi, Zugdidi, Poti, Mameuli, Anaklia and Mestia with the aim of improving the planning and development of water supply and sanitation infrastructures. Another project is in the **Transport** sector to develop a Road safety management Plan with the aim of improving road safety on the roads connecting Vaziani, Telavi, Gurjaani and Vaziani.

And in the region of **Azerbaijan**, we have been working since the end of 2010 on *Technical Assistance to support the Ministry of Economic Development to facilitate the supervision of the Energy Reform Support Programme financed by the EU*. Mention must also be made of the Second National for Water Supply and Sanitation Programme, carrying out the environmental impact assessments in four rayons (Agsu, Ismayilli, Devechi and Siyazan).

- 1 >> **WORKS MANAGEMENT AND SUPERVISION OF THE REFURBISHMENT OF A SALT MINE, ROMANIA**
- 2 >> **"MOLDOVA" EXHIBITION CENTRE IN IASI, ROMANIA**
- 3 >> **TURNKEY WATER TREATMENT PLANTS PROJECT IN ROMANIA**



America



2010 has been a year of more consolidation in the United States

United States

Eptisa's positioning in the United States this past year has remained firm thanks to continuing projects for Spanish construction firms, such as the construction project for the *I-595 motorway in southern Florida* for Dragados, which has enabled us to open a new office in Broward County.

Furthermore we have received the first adjudication to work for the local market. As the company subcontracted to a consortium led by Jacobs, Eptisa will carry out the *Project Development and Environmental (PD&E) Study SR 808 Glades Road Corridor Boca Raton*, in Palm Beach County, Florida.

We have made progress in 2010 on creating strategic alliances to cooperate on the projects for High-Speed Railway Lines which are due to come up for tender in the next few years in the USA. Continuing the aim of extending our participation in PPP (Private-Public Partnership) projects, we have offered our technical support to FCC for presenting its tender for the Presidio Parkway project.

From the United States, in 2010 we began the paperwork for opening a new permanent office in Canada in order to service PPP projects that are underway. ||



IMPROVEMENT TO THE I-595 MOTORWAY IN SOUTHERN FLORIDA

>>

The project is one of the most important in Florida, where Eptisa continues to work for construction companies.

The project involves the improvement, conditioning, widening and design of the surface of the I-595 crossover between the I-75/Sawgrass Expressway junction and the I-595/I-95 junction. There will be three reversible lanes between I-75/Sawgrass Expressway and the east of SR-7, and the connection with Florida's Turnpike.



Central America

In Guatemala, this year we have continued with the **institutional strengthening** of the Ministry of Public Finance, aimed at improving public administration transparency and credibility through a better coherence and efficiency in public expenditure management.

Furthermore, from the end of 2010, Eptisa has been providing technical assistance services to the Government of Guatemala in implementing the *Food Security National Policy and its Strategic Plan (PESAN in Spanish)* to contribute poverty alleviation, reducing food insecurity and chronic malnutrition. It should be pointed out that this is the first technical as-

sistance given to the government of this country to provide monitoring for budgetary support with European Union funds.

In El Salvador, after successfully finishing the first phase of the *Pro-jóvenes Project*, we were awarded the second phase, in which Eptisa has continued providing technical assistance to Salvador's National Council for Security with the aim of promoting social cohesion and to mitigate risk factors of juvenile violence and delinquency in the country.

In Nicaragua we have continued our work in the area of public policies, providing technical assistance for the second phase of the *Institutional Strengthening Programme* for the Government of Nicaragua, financed by the Swiss Cooperation for the consolidation of a Medium-Term Expenditure Framework which will strengthen public finance management.

In addition, during 2010 in **Nicaragua, Bolivia and Colombia**,

Eptisa began the service contract for setting up the projects and programmes approved by the Cooperation Fund for Water and Sanitation Office, with the aim of establishing an *Operating Rules that regulates how the Water Fund works* in the three countries, to review the design of the projects and programmes, issuing conclusions and recommendations to ensure their quality and guarantee that the organisation and institutional capacities are the appropriate ones for implementing actions.

Likewise, after four years' work, the project to produce complete mapping and orthophotography for the whole of **Costa Rica** was successfully completed, covering a land area of about 5 million hectares (has.) at a scale of 1:5.000 and about 300,000 has. of urban centres at a scale of 1:1000.||

European Union has renewed and increased its faith in Eptisa, awarding the management of monitorings projects in Latin America, Caribbean and Pacific Regions and Africa



<< PROJÓVENES IN EL SALVADOR



South America

Over the course of 2010 we continued monitoring all the programmes and projects developed by the EU in Latin America, Cuba and the Caribbean based on ROM (Result-Oriented Monitoring) methodology. As consultants we are responsible for organizing, preparing and leading missions in all countries and for preparing the corresponding reports to ensure a rigorous and comprehensive quality control.

In Bolivia, Eptisa was awarded two projects financed by the EU in the area of **institutional strengthening**.

In the first, we offered our technical assistance services with the purpose of advising and supplying operational support to the Ministry of Mining and Metallurgy, to the Project Management Unit and to the institutions responsible for actions to implement the project for the *Improvement of Work Conditions and Employment*

Creation in the Mining Regions of Bolivia Project (EMPLEOMIN).

The second contract, in a consortium led by the company Eurecna, consisted of providing technical assistance to support Pro-Bolivia Agency in rolling out a *Programme to improve the productivity and the SMEs employment quality*, by improving business capabilities, encouraging productive development and institutional strengthening.

In Ecuador, Eptisa's consortium with the FCC Group company Entemanser-Aqualia is completing the contract of a turnkey project which included designing and building the water supply on the Galapagos Islands after the handover of the water distribution network and reservoir works on the islands of Santa Cruz and San Cristóbal.

In Brazil we continued working for "Acciona Inmobiliaria" on the Consultancy and Technical Assistance for

project design and site supervision of the construction of two towers of residential flats in Guarujá with 25 storeys high each one and a plot area of 20,000 m².

2010 saw us working in the **Water** sector for "Empresa Paranaense de Participações – EPP Energia" on the *Hydroelectric Inventory Study of the Cuiabá River* on a 170 km tranche between the intersection with the Manso River and the city of Cuiabá. ||



Caribbean

Eptisa's growing presence in the Caribbean-Pacific region, thanks to the External Monitoring services for development cooperation projects financed by the European Union, combined with painstaking commercial efforts, have enabled us to open our first office in **Haiti** in December 2010.

In addition, in the **Dominican Republic** we continue providing our services in the area of economic integration through the *Institutional Support Programme for Regional Integration (ISPRI)* to assist in the development of greater levels of trade and investment that will lead to increasing the country's sustainable economic growth and achieve in this way greater trade integration with its partners in Economic Partnership Agreements, both in Europe and in the Caribbean region.

>> TECHNICAL ASSISTANCE IN THE MINING REGIONS OF BOLIVIA





Africa, Asia & the Middle East

Morocco

During 2010 the Development Cooperation continued its activity in **Morocco**, conducting the supervision of the *Budgetary Support Programme* in the adult education sector. The purpose of this project is the improvement in economic, social and political participation of the most disadvantaged segments of the population, as well as the preparation for sector modernisation, emphasising the relationship between vocational education and employment development sector.||



South Africa

We have also continued with our projects in **South Africa**. In a consortium led by the company Eurenca, we provide technical support for monitoring and learning facility for the *Programme to support pro-poor policy development*, which has as its final aim to improve the capacity building of the Government of South Africa to monitor and evaluate the policies and programmes focusing on poverty and in this way cut poverty and unemployment by half by 2014.||

China

In **China** we have completed the installation of laboratory equipment in the Universities of Chuzhou and Zhoukou.

In addition, the project for the *Design and Construction Management for the plant of 34,000 m² for manufacturing parts for the Airbus A-320 and A-350*, fruit of the Joint Venture between Airbus and Hafei, which included the setting up of the building, was completed.||

>> **OPENING OF THE NEW AIRBUS PARTS MANUFACTURING PLANT IN CHINA**

Sub-Saharan Africa

Thanks to the new project awarded of external monitoring services of programmes and projects financed by the European Union, we have been able to extend our presence in the **Sub-Saharan Africa** region. The first permanent missions to take place in 2011 will be those in Angola, Cameroon, Eritrea, Mali, Senegal, Malawi, Somalia, Liberia, Comoros and Chad.||









www.eptisa.com